

MLS 6795536 Land

**\$495,000**

67.64 Acres  
Raw Land

39687 Swanberg Road  
Pine River MN 56474

Status: Pending

#### Description:

This prime top-tier 67.6 wooded acreage is for sale! This sensational property is just 2 miles North of Big Trout Lake of the Whitefish Chain and minutes from all the Crosslake amenities. This land is perfect for any hunting enthusiast as it is studded with mature trees, including big, gorgeous pines. There is minimal wetland and an open meadow. You will have access to the blacktopped Ideal Township Swanburg Road for ease of access. This land is an ideal option for building, recreation, or investment. For detailed location and topography information, please refer to the pictures.

#### Additional Details:

Lot Acres	67.64
Lot Dimensions	1285 x 2550 x 650 x 640 x 650 x 1940
School District	2174
Taxes	\$776
Taxes with Assessments	\$776
Tax Year	2025

#### Additional Features:

#### Driving Directions:

From the intersection of County Road 16 and County Road 6 in Crosslake, take County Road 66 North. Go 3 miles, turn left onto County Road 1. Go 1.9 miles, turn left onto Swanburg Road. Go 0.9 miles to the property addressed 39687. The acreage will be on your right.



Listed By:  
Larson Group Real Estate/Kelle

Affinity Real Estate Inc. participates in the Regional Multiple Listing Service of Minnesota, Inc Broker Reciprocity (sm) program, allowing us to display other broker's listings on our website. All properties are subject to prior sale, change or withdrawal.



Call Affinity Real Estate

**218-237-3333**

[info@affinityrealestate.com](mailto:info@affinityrealestate.com)



Affinity Real Estate - 600 Park Avenue South - Park Rapids MN 56470





website: [www.AffinityRealEstate.com](http://www.AffinityRealEstate.com) | email: [info@affinityrealestate.com](mailto:info@affinityrealestate.com) | office: 218-237-3333 | fax: 218-237-3377



**\$495,000**  
 MLS 6795536 Land  
 39687 Swanberg Road  
 Pine River MN 56474



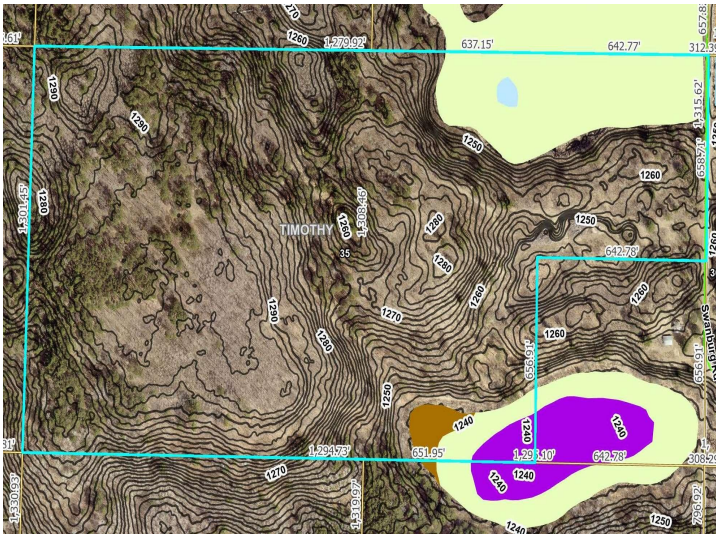


website: [www.AffinityRealEstate.com](http://www.AffinityRealEstate.com) | email: [info@affinityrealestate.com](mailto:info@affinityrealestate.com) | office: 218-237-3333 | fax: 218-237-3377



**\$495,000**  
 MLS 6795536 Land  
 39687 Swanberg Road  
 Pine River MN 56474





website: [www.AffinityRealEstate.com](http://www.AffinityRealEstate.com) | email: [info@affinityrealestate.com](mailto:info@affinityrealestate.com) | office: 218-237-3333 | fax: 218-237-3377



**\$495,000**  
 MLS 6795536 Land  
 39687 Swanberg Road  
 Pine River MN 56474