



MLS 6795580 Residential

\$529,900

1,944 sq ft
3 bedrooms
3 baths

9024 Kinn Drive
Bemidji MN 56601

Status: Hold

Description:

Northwoods Log Home on 8+ Private Acres

Welcome to your picture-perfect log home retreat! This beautifully updated 3 bed, 3 bath home sits at the end of a cul-de-sac on over 8 serene acres. Enjoy fresh interior paint by Borealis Brushworks, new flooring from The Design Store, and a custom-built entry door. The main level features a spacious primary suite, open-concept living, laundry, and a stunning kitchen with a large island — perfect for gathering.

Upstairs offers a loft, two additional bedrooms, and a full bath. Step outside to take in the sunrise, entertain on the deck or patio, and explore the peaceful wilderness. A heated, insulated 2-car garage and a massive 40x60 shop with 16' sidewalls, full power, concrete floor, oversized door, and dual lean-tos offer incredible storage and workspace. Recent forestry mulching added hidden RV/trailer parking off the looped driveway.

Private, peaceful, and move-in ready — this Northwoods gem is a must-see!

Additional Details:

Year Built	2013
Lot Acres	8.65
Lot Dimensions	515x700
Garage Stalls	8
School District	1386
Taxes	\$3,018
Taxes with Assessments	\$3,018
Tax Year	2023

Additional Features:

Basement: Crawl Space **Fuel:** Array **Garage:** 8 **Heat:** Forced Air **Sewer:** Septic System Compliant - Yes **Water:** 4-Inch Submersible, Drilled **Air Conditioning:** Central Air

Driving Directions:

Click By: 218 Real Estate
e 218 Real Estate
each, south on Pincherry to Kinn. east to property on 218



Affinity Real Estate Inc. participates in the Regional Multiple Listing Service of Minnesota, Inc Broker Reciprocity (sm) program, allowing us to display other broker's listings on our website. All properties are subject to prior sale, change or withdrawal.



Call Affinity Real Estate

218-237-3333

info@affinityrealestate.com



Affinity Real Estate - 600 Park Avenue South - Park Rapids MN 56470



website: www.AffinityRealEstate.com | email: info@affinityrealestate.com | office: 218-237-3333 | fax: 218-237-3377

Affinity
REAL ESTATE INC

\$529,900
MLS 6795580 Residential
9024 Kinn Drive
Bemidji MN 56601



website: www.AffinityRealEstate.com | email: info@affinityrealestate.com | office: 218-237-3333 | fax: 218-237-3377



\$529,900
 MLS 6795580 Residential
 9024 Kinn Drive
 Bemidji MN 56601



website: www.AffinityRealEstate.com | email: info@affinityrealestate.com | office: 218-237-3333 | fax: 218-237-3377

Affinity
REAL ESTATE INC

\$529,900
MLS 6795580 Residential
9024 Kinn Drive
Bemidji MN 56601



website: www.AffinityRealEstate.com | email: info@affinityrealestate.com | office: 218-237-3333 | fax: 218-237-3377

Affinity
REAL ESTATE INC

\$529,900
MLS 6795580 Residential
9024 Kinn Drive
Bemidji MN 56601



website: www.AffinityRealEstate.com | email: info@affinityrealestate.com | office: 218-237-3333 | fax: 218-237-3377

Affinity
REAL ESTATE INC

\$529,900
MLS 6795580 Residential
9024 Kinn Drive
Bemidji MN 56601



website: www.AffinityRealEstate.com | email: info@affinityrealestate.com | office: 218-237-3333 | fax: 218-237-3377

Affinity
REAL ESTATE INC

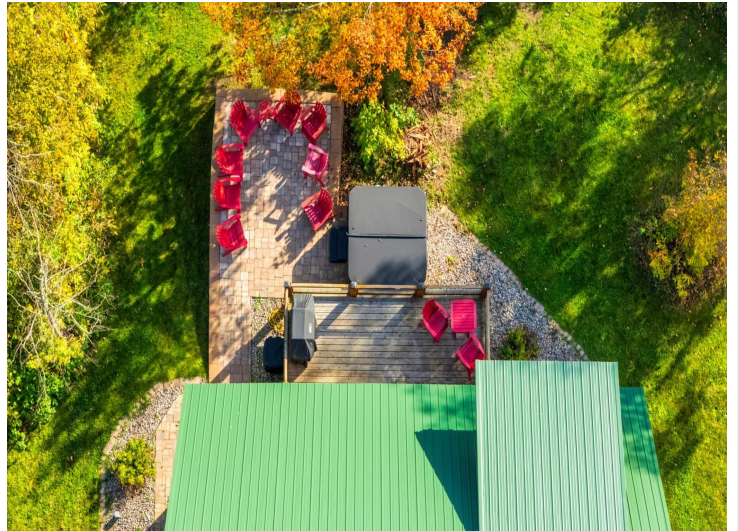
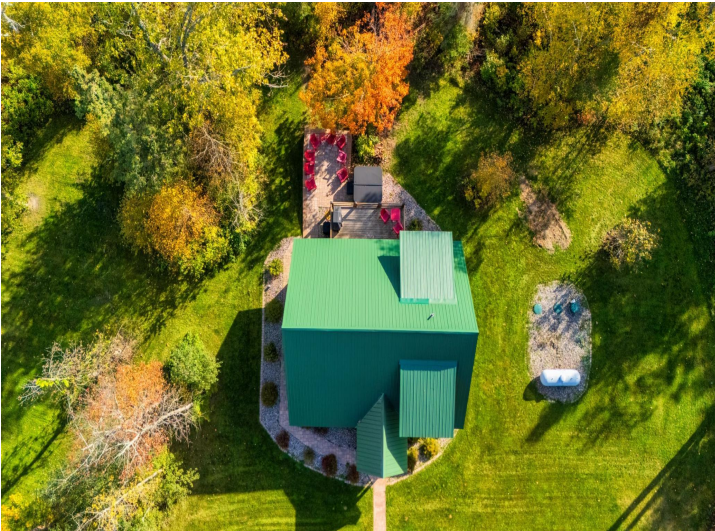
\$529,900
MLS 6795580 Residential
9024 Kinn Drive
Bemidji MN 56601



website: www.AffinityRealEstate.com | email: info@affinityrealestate.com | office: 218-237-3333 | fax: 218-237-3377

Affinity
REAL ESTATE INC

\$529,900
MLS 6795580 Residential
9024 Kinn Drive
Bemidji MN 56601



website: www.AffinityRealEstate.com | email: info@affinityrealestate.com | office: 218-237-3333 | fax: 218-237-3377



\$529,900
 MLS 6795580 Residential
 9024 Kinn Drive
 Bemidji MN 56601



website: www.AffinityRealEstate.com | email: info@affinityrealestate.com | office: 218-237-3333 | fax: 218-237-3377



\$529,900
 MLS 6795580 Residential
 9024 Kinn Drive
 Bemidji MN 56601



website: www.AffinityRealEstate.com | email: info@affinityrealestate.com | office: 218-237-3333 | fax:218-237-3377



\$529,900

MLS 6795580 Residential
9024 Kinn Drive
Bemidji MN 56601