



MLS 6796344 Lake Land

\$199,900

Description:

Discover a rare opportunity in Crow Wing County—37 wooded acres just outside Garrison, featuring mature oak and some massive maples. This property boasts an impressive 8-acre private pond with over 1,800+- feet of shoreline, rolling topography, and sweeping panoramic views of the water and surrounding landscape.

The land is primarily high ground, with excellent building sites available. Open builder—no covenants or deed restrictions. Electricity and broadband are already on site, making it ready for your dream home, hunting cabin, or private retreat.

Sportsmen will love the outstanding hunting opportunities this land provides: excellent whitetail, bear, and turkey hunting, along with phenomenal waterfowl hunting on the pond. Plus, the property directly borders more than 680 acres of State and County land for even more room to roam.

Mille Lacs Lake is only about three miles away, offering world-class fishing and boating. Conveniently located less than two hours from the Twin Cities, this property combines seclusion with accessibility.

This is a one-of-a-kind setting that rarely comes to market—whether for recreation, investment, or building your getaway in the big woods of northern Minnesota !!

Additional Details:

Lot Acres	37
Lot Dimensions	1x1
School District	181
Taxes	\$262
Taxes with Assessments	\$262
Tax Year	2024

Additional Features:

Driving Directions:

From the south, take Highway 101 for about 1.5 miles, West on County 26 for about 1.5 miles, North on Red Oak Drive for about 1.5 miles. Listed by Timber Ghost Realty, LLC



Affinity Real Estate Inc. participates in the Regional Multiple Listing Service of Minnesota, Inc Broker Reciprocity (sm) program, allowing us to display other broker's listings on our website. All properties are subject to prior sale, change or withdrawal.



Call Affinity Real Estate

218-237-3333

info@affinityrealestate.com



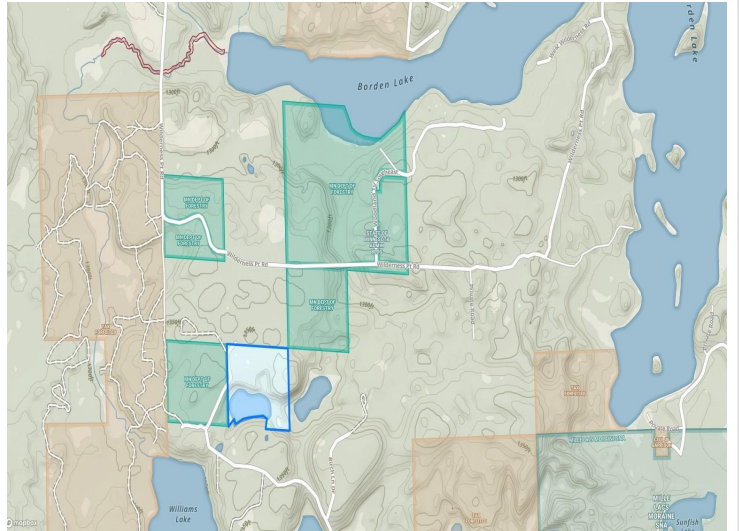
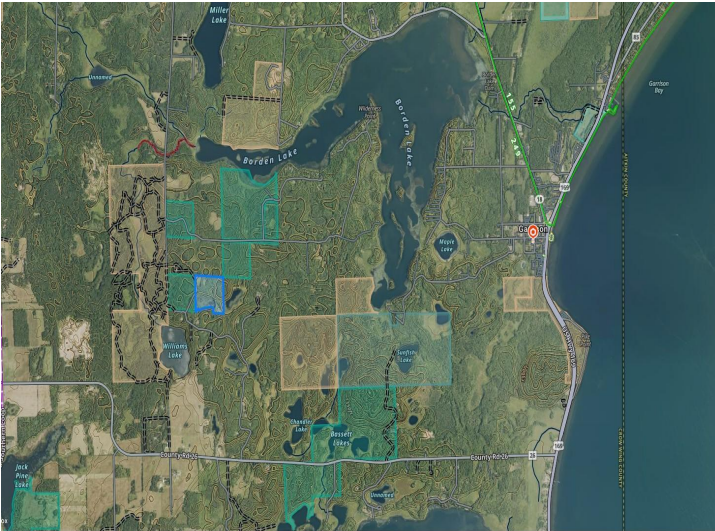
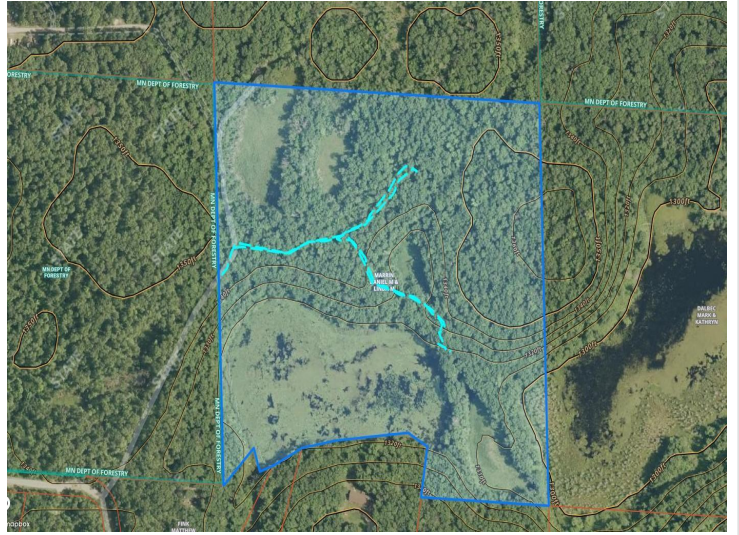
Affinity Real Estate - 600 Park Avenue South - Park Rapids MN 56470



website: www.AffinityRealEstate.com | email: info@affinityrealestate.com | office: 218-237-3333 | fax: 218-237-3377



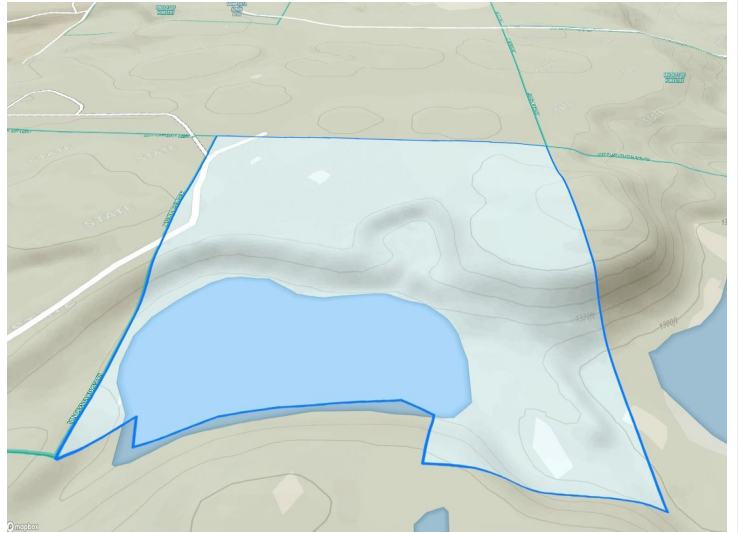
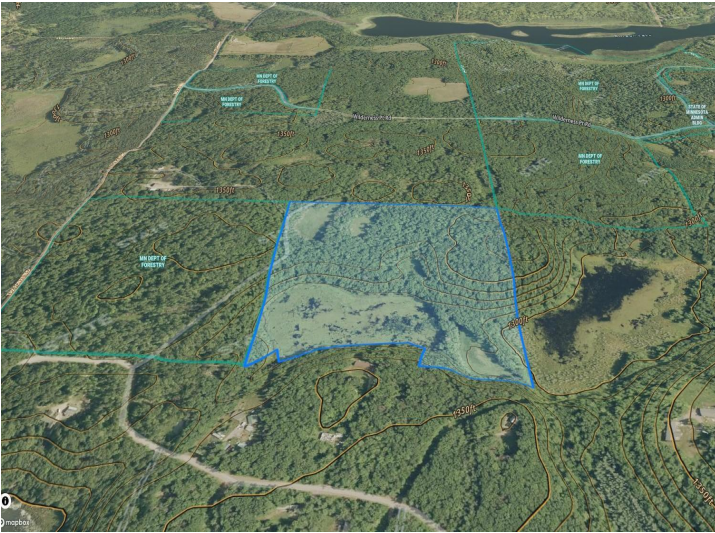
\$199,900
 MLS 6796344 Lake Land
 TBD Red Oak Drive
 Garrison MN 56450



website: www.AffinityRealEstate.com | email: info@affinityrealestate.com | office: 218-237-3333 | fax: 218-237-3377



\$199,900
 MLS 6796344 Lake Land
 TBD Red Oak Drive
 Garrison MN 56450



website: www.AffinityRealEstate.com | email: info@affinityrealestate.com | office: 218-237-3333 | fax: 218-237-3377



\$199,900

MLS 6796344 Lake Land
TBD Red Oak Drive
Garrison MN 56450



website: www.AffinityRealEstate.com | email: info@affinityrealestate.com | office: 218-237-3333 | fax: 218-237-3377



\$199,900
 MLS 6796344 Lake Land
 TBD Red Oak Drive
 Garrison MN 56450



website: www.AffinityRealEstate.com | email: info@affinityrealestate.com | office: 218-237-3333 | fax: 218-237-3377



\$199,900
 MLS 6796344 Lake Land
 TBD Red Oak Drive
 Garrison MN 56450