



MLS 6796353 Residential

**\$379,900**

2,600 sq ft  
4 bedrooms  
3 baths

28445 230TH Street  
Akeley MN 56433

Status: Active

**Description:**

This charming 4-bedroom, 3-bath home is perfectly situated on a peaceful 10-acre parcel, offering a blend of comfort, space and natural beauty. Located just ½ mile from the main highway and minutes from Nevis, Akeley, and numerous lakes, this property provides the ideal setting for a quiet country lifestyle with convenient access to nearby amenities. The main level features an open-concept kitchen, dining, and living area with stunning vaulted pine ceilings. The kitchen is a chef's dream with cherry cabinets, quartz countertops, a gas stove, and all appliances included. The spacious primary bedroom includes a ¾ bath and a walk-in closet. You'll also find main-floor laundry and an attached double garage with breezeway access for added convenience. The lower level boasts two large bedrooms, a spacious family room, and a versatile flex area—ideal for hobbies, a workout space, or a home office. Outdoors, enjoy 10 acres of serene countryside, including approximately 5 wooded acres perfect for exploring or enjoying nature. There's ample space for gardens, additional landscaping, or simply relaxing in your private retreat. Located just ½ mile from the Heartland Trail, this home is a haven for outdoor enthusiasts.

**Additional Details:**

Year Built	2023
Lot Acres	10
Lot Dimensions	329 x 1313
Garage Stalls	2
School District	113
Taxes	\$853
Taxes with Assessments	\$1,074
Tax Year	2025

**Additional Features:**

**Basement:** Daylight/Lookout Windows, Egress Window(s), Finished, Full **Fuel:** Propane **Garage:** 2 **Heat:** Forced Air **Sewer:** Septic System Compliant - Yes, Tank with Drainage Field **Water:** Submersible - 4 Inch, Private **Air Conditioning:** Central Air

**Driving Directions:**

From Park Rapids - Head E on Hwy 34 15 miles and turn right onto 230th Street, proceed .3 mi and property will be on your right.



Listed By:  
Affinity Real Estate Inc.

Affinity Real Estate Inc. participates in the Regional Multiple Listing Service of Minnesota, Inc Broker Reciprocity (sm) program, allowing us to display other broker's listings on our website. All properties are subject to prior sale, change or withdrawal.



**Call Affinity Real Estate**

**218-237-3333**

**info@affinityrealestate.com**



**Affinity Real Estate - 600 Park Avenue South - Park Rapids MN 56470**





website: [www.AffinityRealEstate.com](http://www.AffinityRealEstate.com) | email: [info@affinityrealestate.com](mailto:info@affinityrealestate.com) | office: 218-237-3333 | fax: 218-237-3377



**\$379,900**  
 MLS 6796353 Residential  
 28445 230TH Street  
 Akeley MN 56433





website: [www.AffinityRealEstate.com](http://www.AffinityRealEstate.com) | email: [info@affinityrealestate.com](mailto:info@affinityrealestate.com) | office: 218-237-3333 | fax: 218-237-3377

**Affinity**  
REAL ESTATE INC

**\$379,900**  
MLS 6796353 Residential  
28445 230TH Street  
Akeley MN 56433





website: [www.AffinityRealEstate.com](http://www.AffinityRealEstate.com) | email: [info@affinityrealestate.com](mailto:info@affinityrealestate.com) | office: 218-237-3333 | fax: 218-237-3377



**\$379,900**  
 MLS 6796353 Residential  
 28445 230TH Street  
 Akeley MN 56433



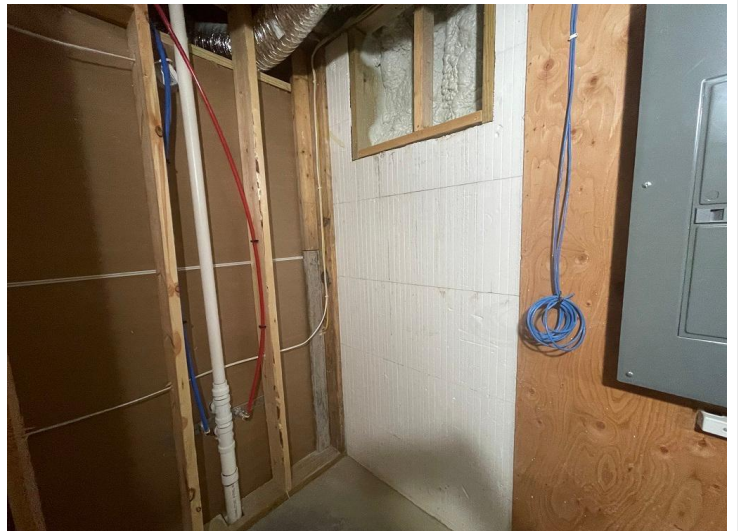


website: [www.AffinityRealEstate.com](http://www.AffinityRealEstate.com) | email: [info@affinityrealestate.com](mailto:info@affinityrealestate.com) | office: 218-237-3333 | fax: 218-237-3377



**\$379,900**  
MLS 6796353 Residential  
28445 230TH Street  
Akeley MN 56433





website: [www.AffinityRealEstate.com](http://www.AffinityRealEstate.com) | email: [info@affinityrealestate.com](mailto:info@affinityrealestate.com) | office: 218-237-3333 | fax: 218-237-3377



**\$379,900**  
MLS 6796353 Residential  
28445 230TH Street  
Akeley MN 56433

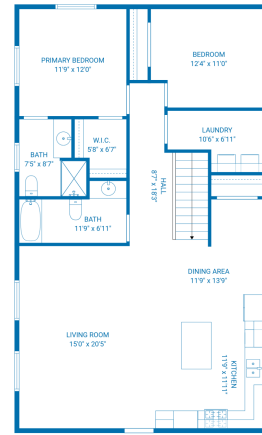




website: [www.AffinityRealEstate.com](http://www.AffinityRealEstate.com) | email: [info@affinityrealestate.com](mailto:info@affinityrealestate.com) | office: 218-237-3333 | fax: 218-237-3377

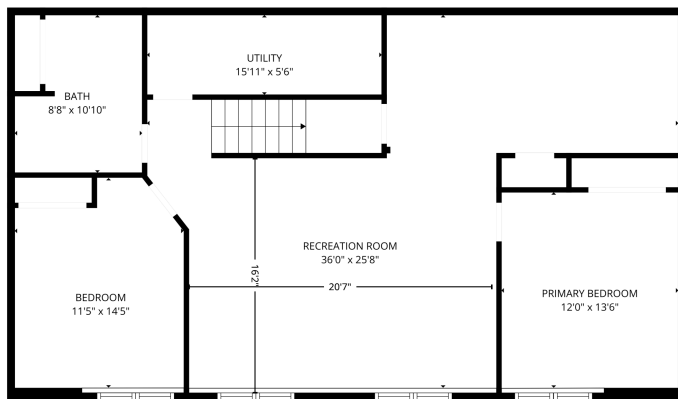
**Affinity**  
REAL ESTATE INC

**\$379,900**  
MLS 6796353 Residential  
28445 230TH Street  
Akeley MN 56433

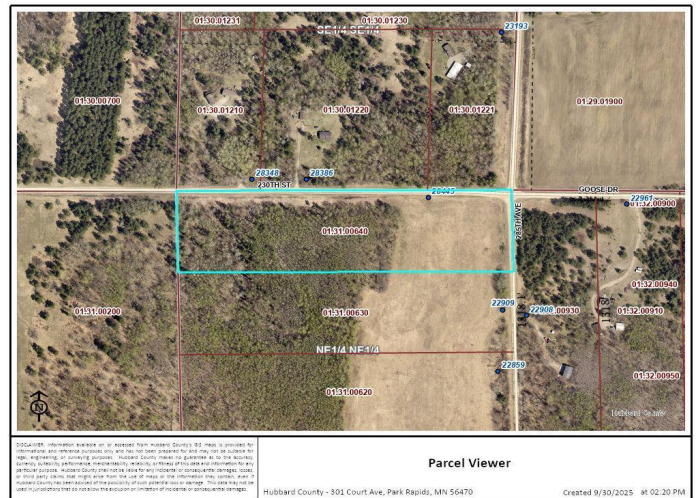


TOTAL: 1254 sq. ft.  
FLOOR 1: 1254 sq. ft.  
EXCLUDED AREAS: WALLS 75 sq. ft.

FLOOR PLAN CREATED BY CURICASA APP. MEASUREMENTS DEEMED HIGHLY RELIABLE BUT NOT GUARANTEED.



FLOOR PLAN CREATED BY CURICASA APP. MEASUREMENTS DEEMED HIGHLY RELIABLE BUT NOT GUARANTEED.



website: [www.AffinityRealEstate.com](http://www.AffinityRealEstate.com) | email: [info@affinityrealestate.com](mailto:info@affinityrealestate.com) | office: 218-237-3333 | fax: 218-237-3377



**\$379,900**  
MLS 6796353 Residential  
28445 230TH Street  
Akeley MN 56433