



MLS 6796902 Residential

**\$389,000**

2,592 sq ft  
4 bedrooms  
3 baths

22909 285th Avenue  
Akeley MN 56433

Status: Active

**Description:**

Enjoy the Space and Sunshine - Newly constructed home with four bedrooms, three baths, fully finished and ready to enjoy. Kitchen has beautiful hickory cabinets with granite counter tops, center island, appliances included along with sought after gas stove. Main level has primary bedroom with 3/4 bath, full bath, 2nd bedroom and laundry. Walk-out basement has 3/4 bath and two spacious bedrooms. The 10 acres provide enough space for all your outdoor activities and 5 acres being completely wooded. Location is within minutes to Akeley or Nevis and 1/2 mile from Heartland Trail. Call for your appointment today!

**Additional Details:**

Year Built	2025
Lot Acres	10
Lot Dimensions	329.38 x 1318.84
Garage Stalls	2
School District	113
Taxes	\$314
Taxes with Assessments	\$314
Tax Year	2025

**Additional Features:**

**Fuel:** Propane **Heat:** Forced Air

**Driving Directions:**

From Park Rapids - Head E on Hwy 34 15 miles and turn right onto 230th Street, proceed 1/2 mile and take a right on 285th Avenue, second home on your right.



Listed By:  
Affinity Real Estate Inc.

Affinity Real Estate Inc. participates in the Regional Multiple Listing Service of Minnesota, Inc Broker Reciprocity (sm) program, allowing us to display other broker's listings on our website. All properties are subject to prior sale, change or withdrawal.



**Call Affinity Real Estate**

**218-237-3333**

**info@affinityrealestate.com**



**Affinity Real Estate - 600 Park Avenue South - Park Rapids MN 56470**





website: [www.AffinityRealEstate.com](http://www.AffinityRealEstate.com) | email: [info@affinityrealestate.com](mailto:info@affinityrealestate.com) | office: 218-237-3333 | fax: 218-237-3377



**\$389,000**  
MLS 6796902 Residential  
22909 285th Avenue  
Akeley MN 56433



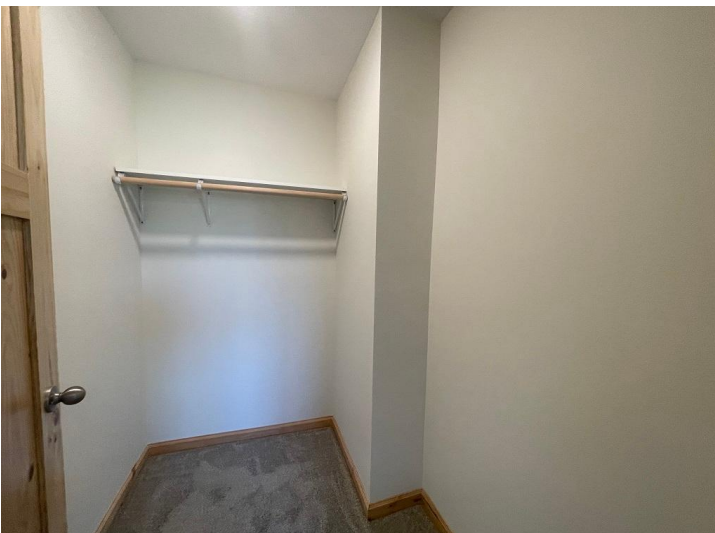
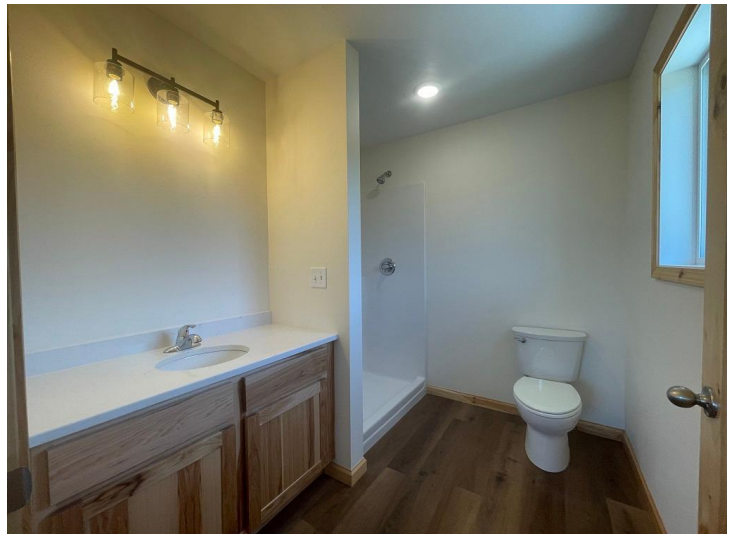


website: [www.AffinityRealEstate.com](http://www.AffinityRealEstate.com) | email: [info@affinityrealestate.com](mailto:info@affinityrealestate.com) | office: 218-237-3333 | fax: 218-237-3377



**\$389,000**  
 MLS 6796902 Residential  
 22909 285th Avenue  
 Akeley MN 56433





website: [www.AffinityRealEstate.com](http://www.AffinityRealEstate.com) | email: [info@affinityrealestate.com](mailto:info@affinityrealestate.com) | office: 218-237-3333 | fax: 218-237-3377



**\$389,000**  
 MLS 6796902 Residential  
 22909 285th Avenue  
 Akeley MN 56433





website: [www.AffinityRealEstate.com](http://www.AffinityRealEstate.com) | email: [info@affinityrealestate.com](mailto:info@affinityrealestate.com) | office: 218-237-3333 | fax: 218-237-3377



**\$389,000**  
MLS 6796902 Residential  
22909 285th Avenue  
Akeley MN 56433





website: [www.AffinityRealEstate.com](http://www.AffinityRealEstate.com) | email: [info@affinityrealestate.com](mailto:info@affinityrealestate.com) | office: 218-237-3333 | fax: 218-237-3377



**\$389,000**  
 MLS 6796902 Residential  
 22909 285th Avenue  
 Akeley MN 56433



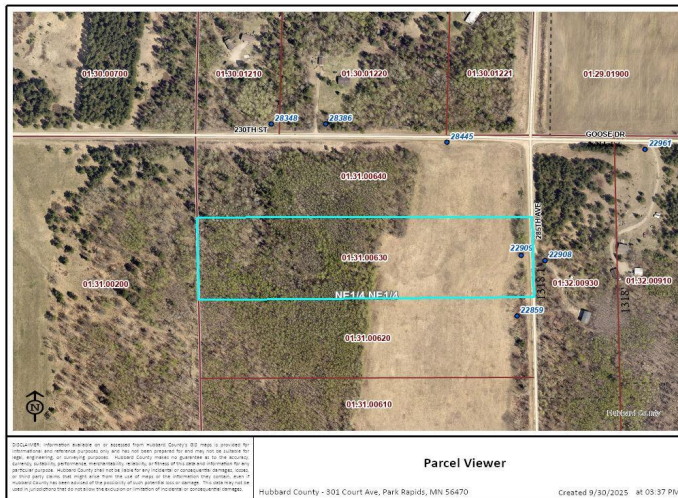


website: [www.AffinityRealEstate.com](http://www.AffinityRealEstate.com) | email: [info@affinityrealestate.com](mailto:info@affinityrealestate.com) | office: 218-237-3333 | fax: 218-237-3377



**\$389,000**  
 MLS 6796902 Residential  
 22909 285th Avenue  
 Akeley MN 56433





website: [www.AffinityRealEstate.com](http://www.AffinityRealEstate.com) | email: [info@affinityrealestate.com](mailto:info@affinityrealestate.com) | office: 218-237-3333 | fax: 218-237-3377



**\$389,000**  
MLS 6796902 Residential  
22909 285th Avenue  
Akeley MN 56433