



MLS 6797788 Residential

\$999,900

2,715 sq ft
5 bedrooms
2 baths

22127 Statesboro Drive
Battle Lake MN 56524

Status: Active

Description:


Welcome to lovely Statesboro Drive on scenic West Battle Lake; if you are seeking a lake home that will be the backdrop to all your best family memories, this is the one. This beautiful property features 100 feet of pristine shoreline and crystal-clear waters & sunset views create the ultimate lakeside retreat. Perfectly positioned to capture breathtaking views, this exceptional home showcases expansive windows that fill the space with natural light and stunning lake vistas from nearly every room. What you will find both inside and outside of this lake home is the meticulous care (new shingles in fall 2025!), the incorporation of lovely design details inspired by nature and the thoughtful layout allowing for numerous guests. Within the home you will find well-appointed bedrooms, updated bathrooms and best of all: a private wing of the home—featuring a large bedroom that leads to a vaulted game room or home office with gorgeous lake views. Other highlighted features include the open living room with stately stone fireplace, charming wrap-around screened porch and spacious deck—perfect setting for morning coffee, sunset dinners, or gathering with friends and family while enjoying panoramic water views. Adding to the property’s appeal is the oversized detached garage with ample storage, work space and additional bedroom or office space. This property is ideally located on a quiet end of the road near 70+ acres of private wooded area featuring different flora and fauna throughout. This private sanctuary is just 8 miles to Glendalough State Park and just 4 miles to the charming town of Battle Lake, filled with wonderful restaurants and shops.

Additional Details:

Year Built	1969
Lot Acres	0.57
Lot Dimensions	100 x240
Garage Stalls	3
School District	1941
Taxes	\$5,578
Taxes with Assessments	\$5,578
Tax Year	2026

Additional Features:

Basement: Crawl Space **Fuel:** Array **Garage:** 3 **Heat:** Forced Air **Sewer:** Septic System Compliant - Yes **Water:** Well **Air Conditioning:** Central Air

 Listed By:
Century 21 Atwood
born on 402nd Ave., east on Statesboro Dr.

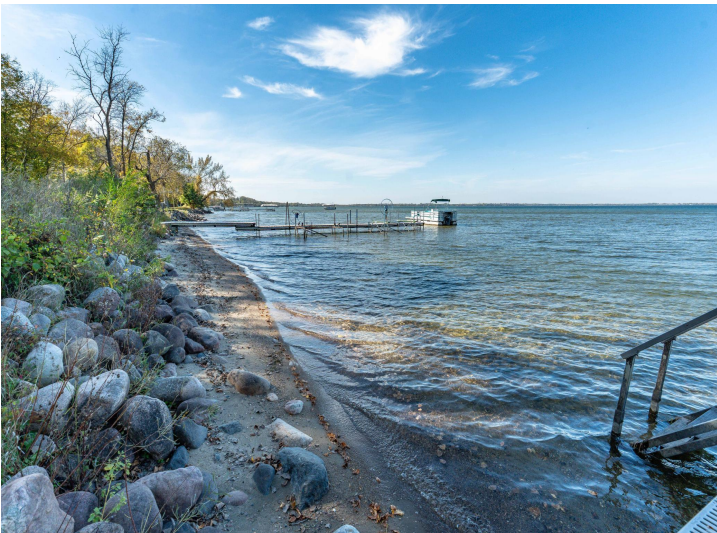
Affinity Real Estate Inc. participates in the Regional Multiple Listing Service of Minnesota, Inc Broker Reciprocity (sm) program, allowing us to display other broker’s listings on our website. All properties are subject to prior sale, change or withdrawal.



Call Affinity Real Estate
218-237-3333
info@affinityrealestate.com



Affinity Real Estate - 600 Park Avenue South - Park Rapids MN 56470



website: www.AffinityRealEstate.com | email: info@affinityrealestate.com | office: 218-237-3333 | fax: 218-237-3377

Affinity
REAL ESTATE INC

\$999,900
MLS 6797788 Residential
22127 Statesboro Drive
Battle Lake MN 56524



website: www.AffinityRealEstate.com | email: info@affinityrealestate.com | office: 218-237-3333 | fax:218-237-3377

Affinity
REAL ESTATE INC

\$999,900
MLS 6797788 Residential
22127 Statesboro Drive
Battle Lake MN 56524



website: www.AffinityRealEstate.com | email: info@affinityrealestate.com | office: 218-237-3333 | fax: 218-237-3377

Affinity
REAL ESTATE INC

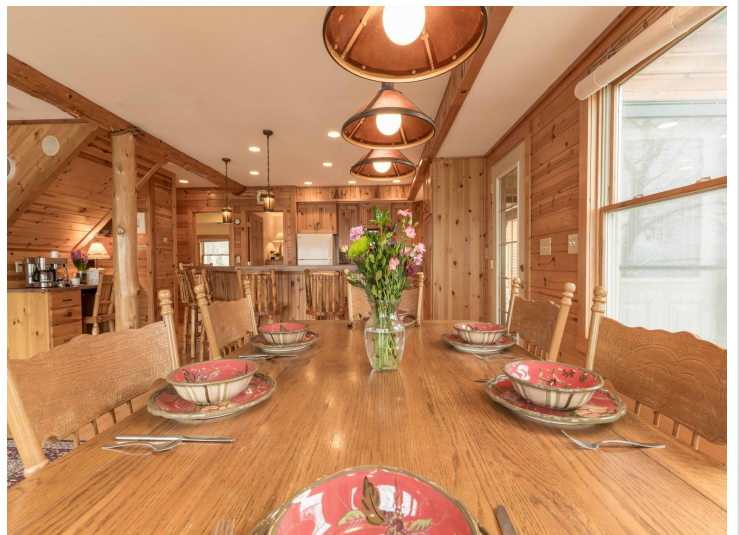
\$999,900
MLS 6797788 Residential
22127 Statesboro Drive
Battle Lake MN 56524



website: www.AffinityRealEstate.com | email: info@affinityrealestate.com | office: 218-237-3333 | fax: 218-237-3377

Affinity
REAL ESTATE INC

\$999,900
MLS 6797788 Residential
22127 Statesboro Drive
Battle Lake MN 56524



website: www.AffinityRealEstate.com | email: info@affinityrealestate.com | office: 218-237-3333 | fax:218-237-3377

Affinity
REAL ESTATE INC

\$999,900
MLS 6797788 Residential
22127 Statesboro Drive
Battle Lake MN 56524



website: www.AffinityRealEstate.com | email: info@affinityrealestate.com | office: 218-237-3333 | fax: 218-237-3377

Affinity
REAL ESTATE INC

\$999,900
MLS 6797788 Residential
22127 Statesboro Drive
Battle Lake MN 56524



website: www.AffinityRealEstate.com | email: info@affinityrealestate.com | office: 218-237-3333 | fax:218-237-3377



\$999,900
MLS 6797788 Residential
22127 Statesboro Drive
Battle Lake MN 56524



website: www.AffinityRealEstate.com | email: info@affinityrealestate.com | office: 218-237-3333 | fax:218-237-3377



\$999,900
MLS 6797788 Residential
22127 Statesboro Drive
Battle Lake MN 56524



website: www.AffinityRealEstate.com | email: info@affinityrealestate.com | office: 218-237-3333 | fax:218-237-3377

Affinity
REAL ESTATE INC

\$999,900
MLS 6797788 Residential
22127 Statesboro Drive
Battle Lake MN 56524



website: www.AffinityRealEstate.com | email: info@affinityrealestate.com | office: 218-237-3333 | fax: 218-237-3377

Affinity
REAL ESTATE INC

\$999,900
MLS 6797788 Residential
22127 Statesboro Drive
Battle Lake MN 56524



website: www.AffinityRealEstate.com | email: info@affinityrealestate.com | office: 218-237-3333 | fax:218-237-3377



\$999,900
MLS 6797788 Residential
22127 Statesboro Drive
Battle Lake MN 56524



website: www.AffinityRealEstate.com | email: info@affinityrealestate.com | office: 218-237-3333 | fax: 218-237-3377

Affinity
REAL ESTATE INC

\$999,900
MLS 6797788 Residential
22127 Statesboro Drive
Battle Lake MN 56524



website: www.AffinityRealEstate.com | email: info@affinityrealestate.com | office: 218-237-3333 | fax: 218-237-3377

Affinity
REAL ESTATE INC

\$999,900
MLS 6797788 Residential
22127 Statesboro Drive
Battle Lake MN 56524