



MLS 6797839 Residential

\$329,000

2,118 sq ft
4 bedrooms
2 baths

14970 Mary Beth Lane
Little Falls MN 56345

Status: Active

Description:

This beautifully updated 4-bedroom, 2-bath home offers the perfect blend of comfort, convenience, and easy living. Tucked away at the end of a peaceful cul-de-sac, it's a safe and inviting place for kids to play and neighbors to gather. Inside, you'll love the fresh updates throughout—new flooring, countertops, fixtures, and paint create a bright, modern feel. The kitchen shines with all-new stainless steel appliances, including a gas range for the home chef, while the new washer and dryer make daily routines a breeze. A new roof (2023) means peace of mind for years to come. Step outside to a backyard designed for fun and relaxation. A brand-new deck is perfect for barbecues and evening conversations, while the beautifully landscaped yard features an in-ground sprinkler system with a sand point well to keep everything green and low-maintenance. Kids will love their very own playground, and just a short walk away is a community park complete with a splashpad for endless summer memories. This home isn't just move-in ready—it's ready for your next chapter. Don't miss your chance to enjoy a fantastic neighborhood and all the thoughtful updates this home has to offer!

Additional Details:

Year Built	2006
Lot Acres	0.44
Lot Dimensions	57x176x41x180x125
Garage Stalls	2
School District	482
Taxes	\$3,376
Taxes with Assessments	\$3,376
Tax Year	2025

Additional Features:

Basement: Block **Fuel:** Natural Gas **Garage:** 2 **Heat:** Forced Air **Sewer:** City Sewer/Connected **Water:** City Water/Connected **Air Conditioning:** Central Air

Driving Directions:

From downtown Little Falls head North on Haven Road. Left on Edmund Street, Right on Madison Drive, Right on Mary Beth Lane, end of cul-de-sac.



Listed By:
North Pointe Realty Advantage

Affinity Real Estate Inc. participates in the Regional Multiple Listing Service of Minnesota, Inc Broker Reciprocity (sm) program, allowing us to display other broker's listings on our website. All properties are subject to prior sale, change or withdrawal.



Call Affinity Real Estate

218-237-3333

info@affinityrealestate.com



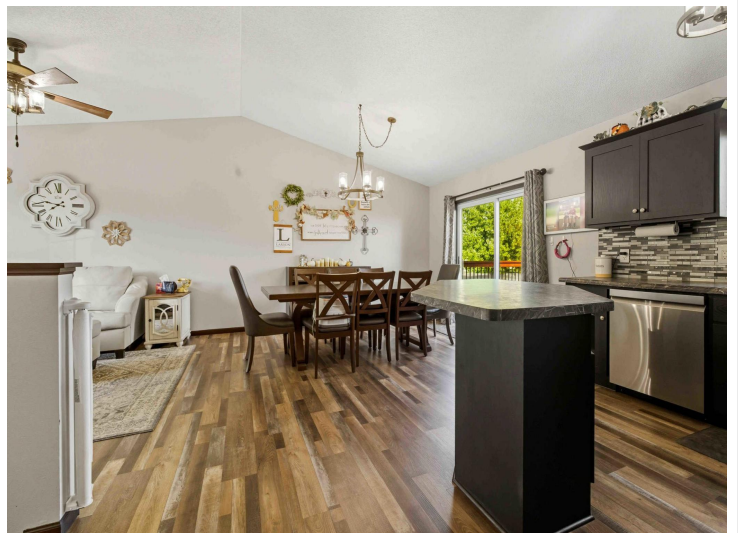
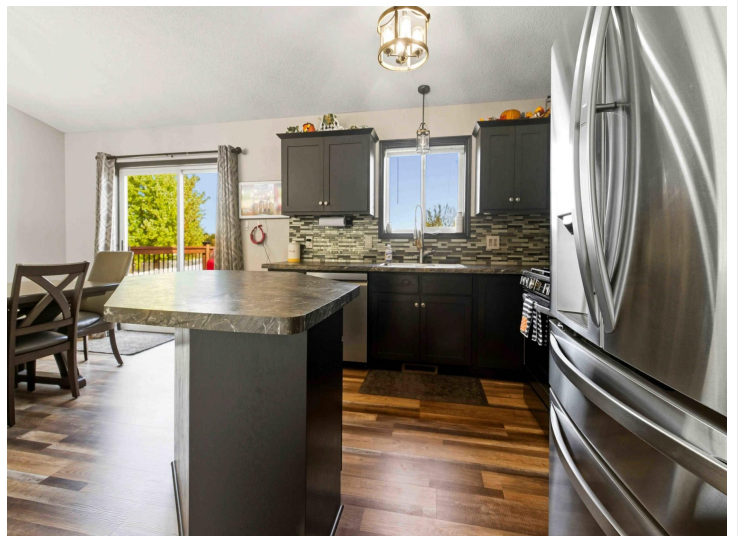
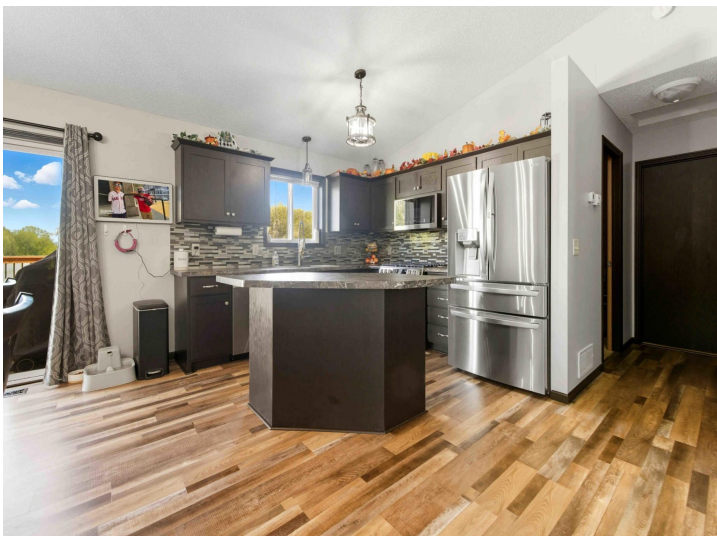
Affinity Real Estate - 600 Park Avenue South - Park Rapids MN 56470



website: www.AffinityRealEstate.com | email: info@affinityrealestate.com | office: 218-237-3333 | fax: 218-237-3377

Affinity
REAL ESTATE INC

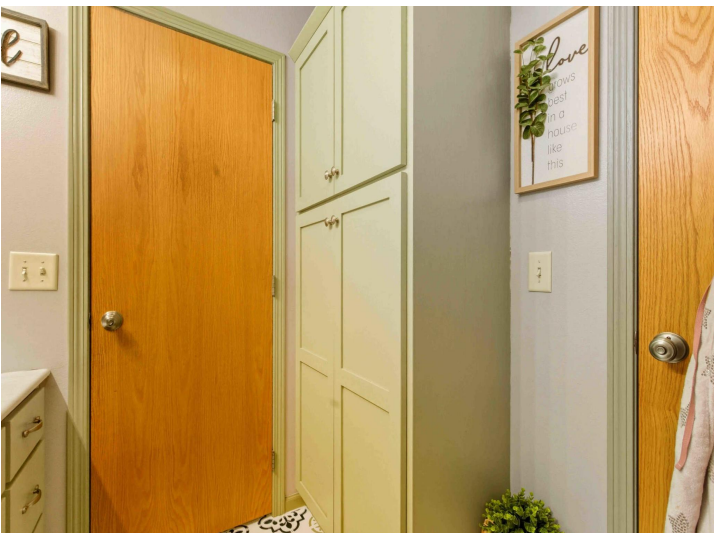
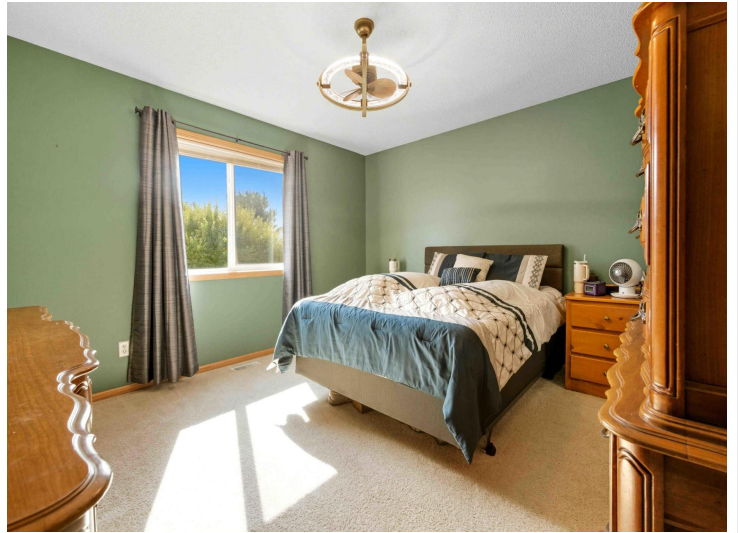
\$329,000
MLS 6797839 Residential
14970 Mary Beth Lane
Little Falls MN 56345



website: www.AffinityRealEstate.com | email: info@affinityrealestate.com | office: 218-237-3333 | fax: 218-237-3377

Affinity
REAL ESTATE INC

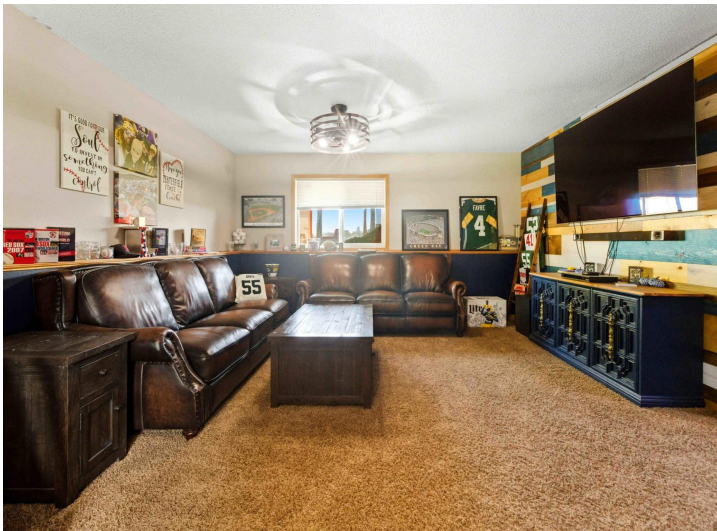
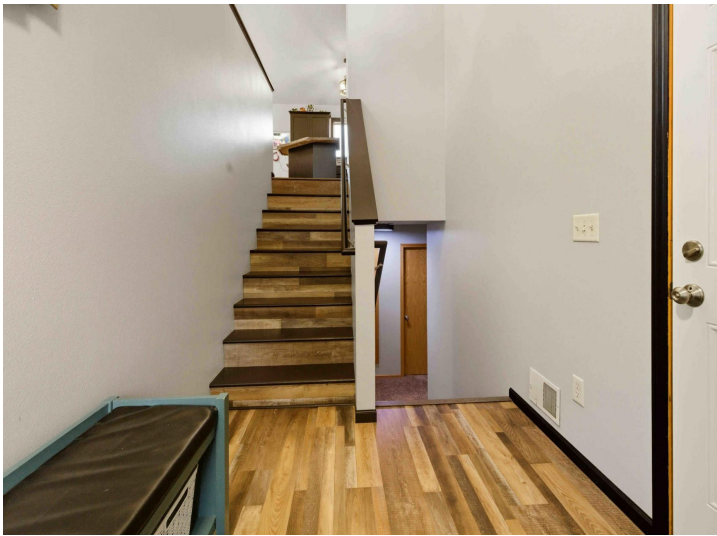
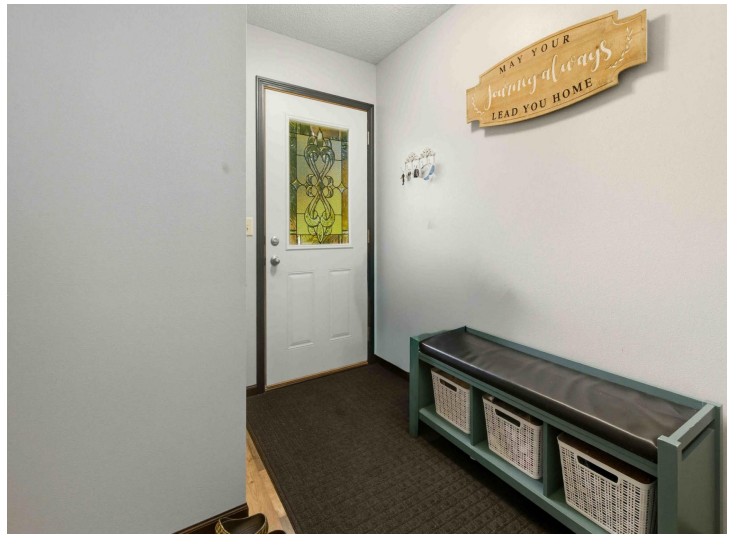
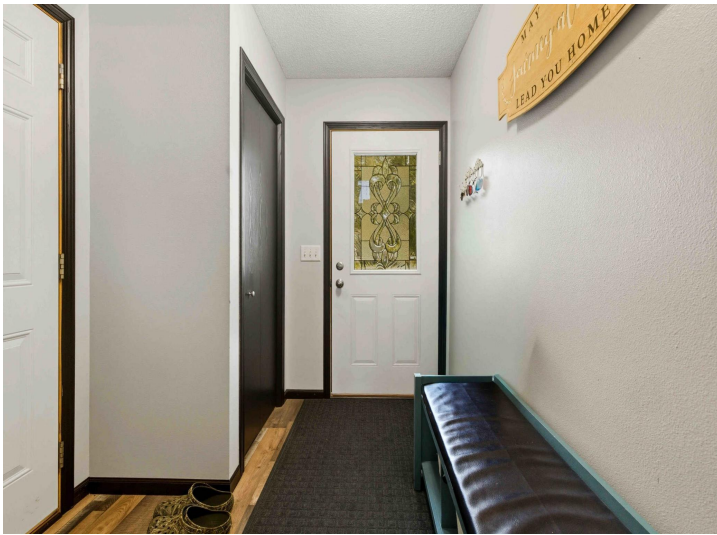
\$329,000
MLS 6797839 Residential
14970 Mary Beth Lane
Little Falls MN 56345



website: www.AffinityRealEstate.com | email: info@affinityrealestate.com | office: 218-237-3333 | fax: 218-237-3377

Affinity
REAL ESTATE INC

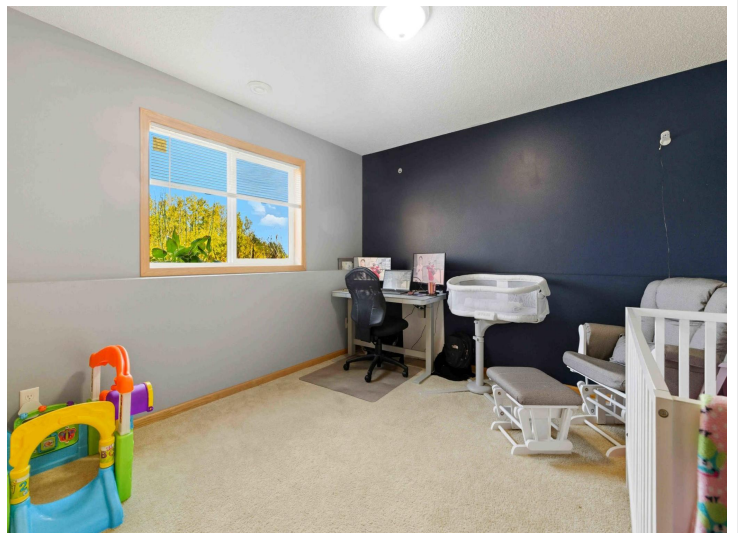
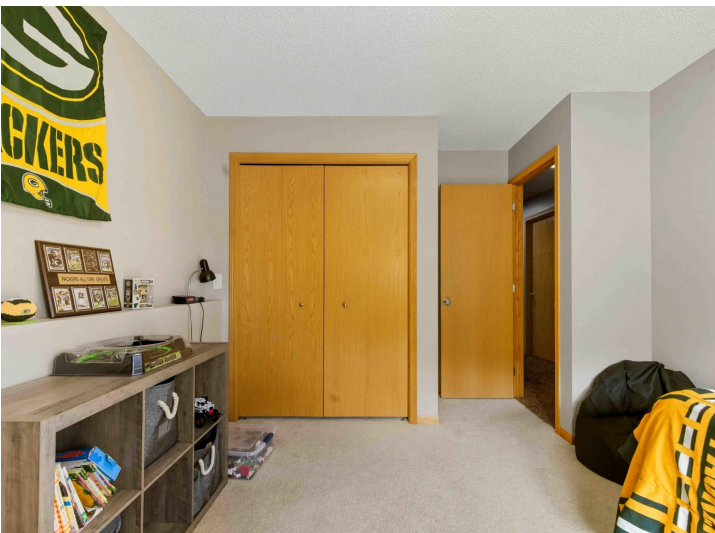
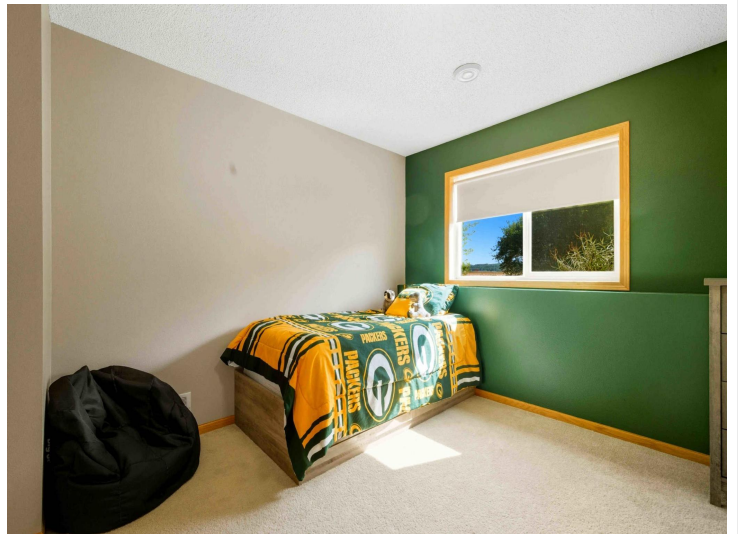
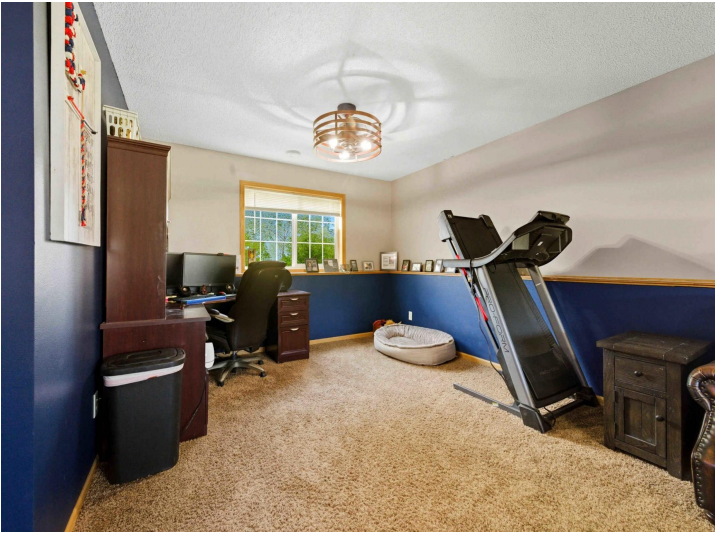
\$329,000
MLS 6797839 Residential
14970 Mary Beth Lane
Little Falls MN 56345



website: www.AffinityRealEstate.com | email: info@affinityrealestate.com | office: 218-237-3333 | fax: 218-237-3377

Affinity
REAL ESTATE INC

\$329,000
MLS 6797839 Residential
14970 Mary Beth Lane
Little Falls MN 56345



website: www.AffinityRealEstate.com | email: info@affinityrealestate.com | office: 218-237-3333 | fax: 218-237-3377

Affinity
REAL ESTATE INC

\$329,000
MLS 6797839 Residential
14970 Mary Beth Lane
Little Falls MN 56345



website: www.AffinityRealEstate.com | email: info@affinityrealestate.com | office: 218-237-3333 | fax: 218-237-3377



\$329,000
MLS 6797839 Residential
14970 Mary Beth Lane
Little Falls MN 56345



website: www.AffinityRealEstate.com | email: info@affinityrealestate.com | office: 218-237-3333 | fax:218-237-3377



\$329,000
MLS 6797839 Residential
14970 Mary Beth Lane
Little Falls MN 56345