



MLS 6797845 Residential

**\$389,900**

2,744 sq ft  
5 bedrooms  
3 baths

1430 Sumac Road  
Bemidji MN 56601

Status: Active

#### Description:

Welcome to this spacious 5-bedroom, 3-bath home nestled on 5 beautiful acres just minutes north of Bemidji. (40 Acres total, 5 on the home site and 35 acres of Sumac Lake) You'll see mature trees and Sumac Lake across the road, this property combines privacy, functionality, and the beauty of nature all in one.

The home offers 1,372 sq ft on each level, with a walkout lower level that adds flexibility for guests, extended family, or a separate living area. Step outside onto the wrap-around deck and enjoy peaceful mornings surrounded by wildlife and towering hardwoods.

Let's talk shop! 28' x 56' shop, perfect for storing boats, ATVs, vehicles, or running a home business or hobby space. The large detached 2-stall garage provides additional parking and storage.

Located on Sumac Road NW, this property offers easy access to town while feeling worlds away. Whether you're looking for a comfortable year-round home with space to grow, or a Northwoods retreat with room for toys and projects, this property delivers

#### Additional Details:

Year Built	2003
Lot Acres	40
Lot Dimensions	1320 x 1320
Garage Stalls	2
School District	31
Taxes	\$2,678
Taxes with Assessments	\$2,678
Tax Year	2025

#### Additional Features:

**Basement:** Full, Walkout **Fuel:** Propane **Garage:** 2 **Heat:** Forced Air **Sewer:** Private Sewer, Septic System Compliant - Yes, Tank with Drainage Field **Water:** Submersible - 4 Inch, Private, Well **Air Conditioning:** None

#### Driving Directions:

Live By: 1430 Sumac Rd NW, to 1430 Sumac.  
Real Broker, LLC



Affinity Real Estate Inc. participates in the Regional Multiple Listing Service of Minnesota, Inc Broker Reciprocity (sm) program, allowing us to display other broker's listings on our website. All properties are subject to prior sale, change or withdrawal.



Call Affinity Real Estate

**218-237-3333**

[info@affinityrealestate.com](mailto:info@affinityrealestate.com)



Affinity Real Estate - 600 Park Avenue South - Park Rapids MN 56470





website: [www.AffinityRealEstate.com](http://www.AffinityRealEstate.com) | email: [info@affinityrealestate.com](mailto:info@affinityrealestate.com) | office: 218-237-3333 | fax: 218-237-3377

**Affinity**  
REAL ESTATE INC

**\$389,900**  
MLS 6797845 Residential  
1430 Sumac Road  
Bemidji MN 56601





website: [www.AffinityRealEstate.com](http://www.AffinityRealEstate.com) | email: [info@affinityrealestate.com](mailto:info@affinityrealestate.com) | office: 218-237-3333 | fax: 218-237-3377

**Affinity**  
REAL ESTATE INC

**\$389,900**  
MLS 6797845 Residential  
1430 Sumac Road  
Bemidji MN 56601





website: [www.AffinityRealEstate.com](http://www.AffinityRealEstate.com) | email: [info@affinityrealestate.com](mailto:info@affinityrealestate.com) | office: 218-237-3333 | fax: 218-237-3377

**Affinity**  
REAL ESTATE INC

**\$389,900**  
MLS 6797845 Residential  
1430 Sumac Road  
Bemidji MN 56601





website: [www.AffinityRealEstate.com](http://www.AffinityRealEstate.com) | email: [info@affinityrealestate.com](mailto:info@affinityrealestate.com) | office: 218-237-3333 | fax: 218-237-3377

**Affinity**  
REAL ESTATE INC

**\$389,900**  
MLS 6797845 Residential  
1430 Sumac Road  
Bemidji MN 56601



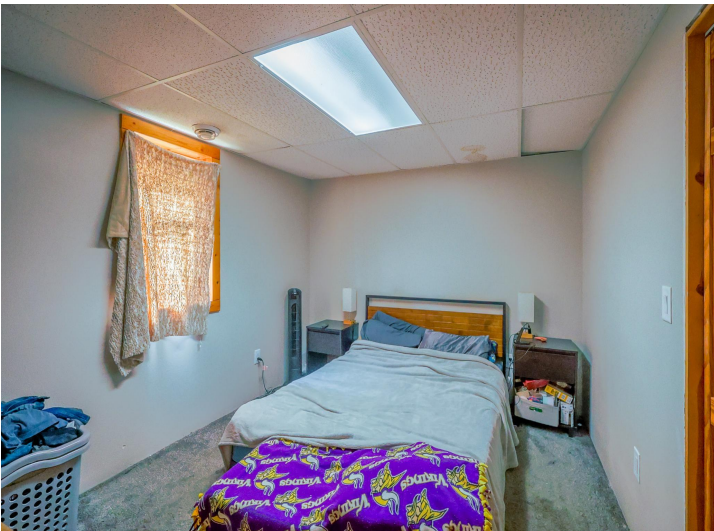


website: [www.AffinityRealEstate.com](http://www.AffinityRealEstate.com) | email: [info@affinityrealestate.com](mailto:info@affinityrealestate.com) | office: 218-237-3333 | fax: 218-237-3377

**Affinity**  
REAL ESTATE INC

**\$389,900**  
MLS 6797845 Residential  
1430 Sumac Road  
Bemidji MN 56601





website: [www.AffinityRealEstate.com](http://www.AffinityRealEstate.com) | email: [info@affinityrealestate.com](mailto:info@affinityrealestate.com) | office: 218-237-3333 | fax: 218-237-3377

**Affinity**  
REAL ESTATE INC

**\$389,900**  
MLS 6797845 Residential  
1430 Sumac Road  
Bemidji MN 56601





website: [www.AffinityRealEstate.com](http://www.AffinityRealEstate.com) | email: [info@affinityrealestate.com](mailto:info@affinityrealestate.com) | office: 218-237-3333 | fax: 218-237-3377



**\$389,900**  
 MLS 6797845 Residential  
 1430 Sumac Road  
 Bemidji MN 56601





website: [www.AffinityRealEstate.com](http://www.AffinityRealEstate.com) | email: [info@affinityrealestate.com](mailto:info@affinityrealestate.com) | office: 218-237-3333 | fax: 218-237-3377



**\$389,900**  
 MLS 6797845 Residential  
 1430 Sumac Road  
 Bemidji MN 56601





website: [www.AffinityRealEstate.com](http://www.AffinityRealEstate.com) | email: [info@affinityrealestate.com](mailto:info@affinityrealestate.com) | office: 218-237-3333 | fax: 218-237-3377



**\$389,900**  
 MLS 6797845 Residential  
 1430 Sumac Road  
 Bemidji MN 56601





website: [www.AffinityRealEstate.com](http://www.AffinityRealEstate.com) | email: [info@affinityrealestate.com](mailto:info@affinityrealestate.com) | office: 218-237-3333 | fax: 218-237-3377



**\$389,900**  
 MLS 6797845 Residential  
 1430 Sumac Road  
 Bemidji MN 56601