



MLS 6797855 Lake Land

\$74,000



Description:

Escape to the serenity of the Northwoods with this quiet, secluded lakefront lot offering 218 feet of gently sloping shoreline. Whether you're looking to build your dream cabin or simply park your RV and relax, this property is ready for you—driveway and electric are already in place, and a building site has been cleared. Enjoy excellent fishing, peaceful surroundings, and stunning lake views. A rare opportunity to own a slice of nature with everything you need to start making memories right away.

Additional Details:

Lot Acres	2.78
Lot Dimensions	215x625x207x613
School District	2174
Taxes	\$288
Taxes with Assessments	\$288
Tax Year	2025

Additional Features:

Driving Directions:

Hwy 87E from Backus- East on Cty. Rd. 49 left on 10th Ave. to Rock Elm Trail, property on right



Listed By:
eXp Realty

Affinity Real Estate Inc. participates in the Regional Multiple Listing Service of Minnesota, Inc Broker Reciprocity (sm) program, allowing us to display other broker's listings on our website. All properties are subject to prior sale, change or withdrawal.



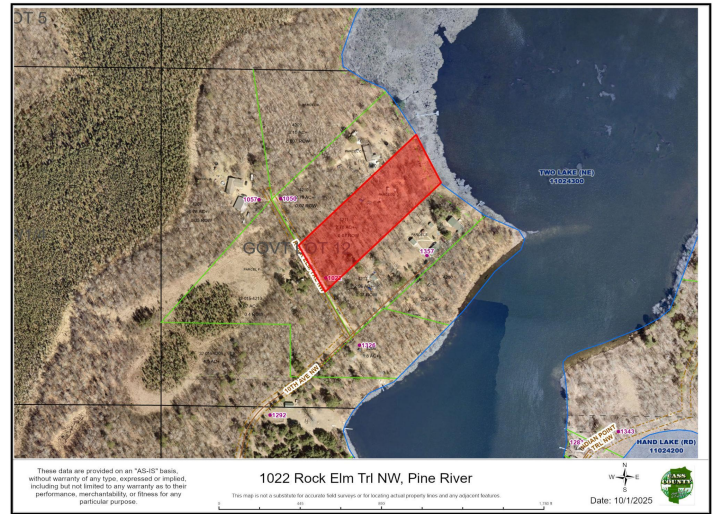
Call Affinity Real Estate

218-237-3333

info@affinityrealestate.com



Affinity Real Estate - 600 Park Avenue South - Park Rapids MN 56470



website: www.AffinityRealEstate.com | email: info@affinityrealestate.com | office: 218-237-3333 | fax: 218-237-3377



\$74,000
 MLS 6797855 Lake Land
 1022 Rock Elm Trail
 Pine River MN 56474

website: www.AffinityRealEstate.com | email: info@affinityrealestate.com | office: 218-237-3333 | fax: 218-237-3377



\$74,000

MLS 6797855 Lake Land
1022 Rock Elm Trail
Pine River MN 56474

website: www.AffinityRealEstate.com | email: info@affinityrealestate.com | office: 218-237-3333 | fax:218-237-3377



\$74,000

MLS 6797855 Lake Land
1022 Rock Elm Trail
Pine River MN 56474

website: www.AffinityRealEstate.com | email: info@affinityrealestate.com | office: 218-237-3333 | fax:218-237-3377



\$74,000

MLS 6797855 Lake Land
1022 Rock Elm Trail
Pine River MN 56474