



MLS 6797979 Land

**\$395,000**

3.67 Acres  
Finished Lot(s)

TBD Mulligan Drive  
Emily MN 56447

Status: Active

#### Description:

Opportunity awaits! Development potential is in place for 8 townhomes on the Emily Greens Golf Course. The development is approved by the county and permits can be immediately pulled to start construction. All units will have golf course views. Preliminary proposed floor plans are available. This location will offer fee ownership or rental potential. Situated in an excellent location only 14 minutes from Crosslake and the Whitefish Chain of Lakes.

#### Additional Details:

Lot Acres	3.67
Lot Dimensions	400 x 400
School District	182
Taxes	\$1,120
Taxes with Assessments	\$1,120
Tax Year	2025

#### Additional Features:

#### Driving Directions:

From the intersection for County Road 3 and County Road 66 in Crosslake, go north on County Road 3 for approximately 6 miles then turn right onto County Road 1. Go 3.4 miles and turn right onto Mulligan Drive.



Listed By:  
Larson Group Real Estate/Kelle

Affinity Real Estate Inc. participates in the Regional Multiple Listing Service of Minnesota, Inc Broker Reciprocity (sm) program, allowing us to display other broker's listings on our website. All properties are subject to prior sale, change or withdrawal.



Call Affinity Real Estate

**218-237-3333**

[info@affinityrealestate.com](mailto:info@affinityrealestate.com)



Affinity Real Estate - 600 Park Avenue South - Park Rapids MN 56470





website: [www.AffinityRealEstate.com](http://www.AffinityRealEstate.com) | email: [info@affinityrealestate.com](mailto:info@affinityrealestate.com) | office: 218-237-3333 | fax: 218-237-3377



**\$395,000**  
 MLS 6797979 Land  
 TBD Mulligan Drive  
 Emily MN 56447



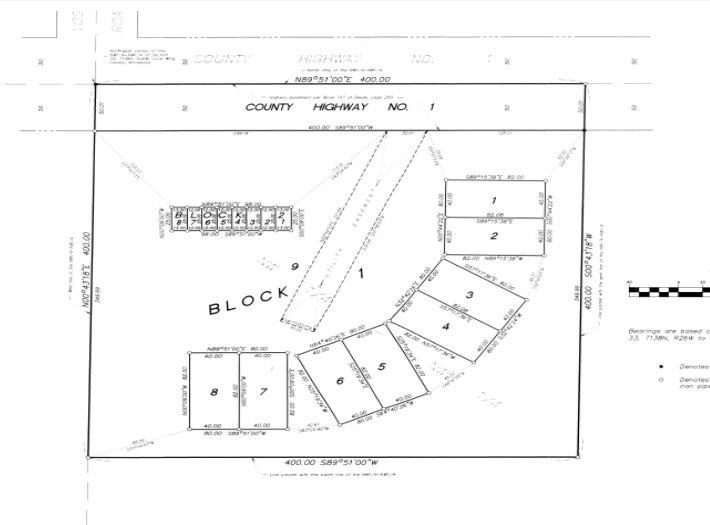


website: [www.AffinityRealEstate.com](http://www.AffinityRealEstate.com) | email: [info@affinityrealestate.com](mailto:info@affinityrealestate.com) | office: 218-237-3333 | fax: 218-237-3377



**\$395,000**  
MLS 6797979 Land  
TBD Mulligan Drive  
Emily MN 56447





website: [www.AffinityRealEstate.com](http://www.AffinityRealEstate.com) | email: [info@affinityrealestate.com](mailto:info@affinityrealestate.com) | office: 218-237-3333 | fax: 218-237-3377



**\$395,000**  
 MLS 6797979 Land  
 TBD Mulligan Drive  
 Emily MN 56447