



MLS 6798004 Land

**\$135,000**

69.07 Acres

Raw Land

Parcel #3 TBD County 9

Becida MN 56678

Status: Active

#### Description:

69.07-Acre Property in Northern Minnesota – A Natural Haven for Wildlife, Outdoor Enthusiasts, and Builders alike!

This stunning 69.07-acre slice of Northern Minnesota's picturesque countryside offers the perfect mix of majestic pine trees, deciduous forests, wetlands, and open fields. This unique property embodies natural beauty, wildlife-rich habitats, and endless possibilities for sustainable living, outdoor activities, and personal projects.

**-Nature and Wildlife-** With a dense mix of deciduous and coniferous trees, the land creates a environment that's a haven for wildlife and a dream come true for hunters and nature lovers. The property's wetlands attract an array of local species, making it prime ground for deer hunting, birdwatching, and wildlife observation. Keep an eye out for deer scrapes and other signs that make this property a hunter's paradise. Adjacent to state land, this property offers extended hunting and recreational possibilities, along with direct access from the northwest corner for an easy backcountry feel.

**-Agriculture and Sustainable Living Potential-** Imagine cultivating your own crops, setting up a greenhouse, or establishing a lush garden in the fertile fields of this property. Previously a neighboring farmer planted and harvested the field crop, but it's yours to take over and turn it into your own sustainable homestead or hobby farm. The options for personal projects, from farming to building a unique outdoor retreat, are endless! This pine haven provides endless possibilities: use it as a private forested retreat, enhance it for wildlife habitats, or explore the potential for future timber production. Access throughout the plantation is easy, making it manageable for upkeep or harvesting.

**-Prime Location for Outdoor Enthusiasts-** Surrounded by Northern Minnesota's best outdoor amenities, this property is just minutes from La Salle Lake State Recreation Area, known for its pristine fishing, boating, and hiking trails. The North Country Trail System, as well as renowned fishing spots at Hennepin, Diamond, La Salle, and Plantagenet Lakes, are also nearby, providing endless adventure opportunities. Also located just off of the ATV/Snowmobile trail system. In addition to the typical northern Minnesota attractions and amenities, this property is cleverly situated just 15 miles from Bemidji and 14 miles from Lake Itasca.

**-Unique Opportunity in a Prime Location-** A property like this—one that balances breathtaking scenery, wildlife-rich areas, and agricultural potential—rarely comes along. Whether you envision a peaceful homestead, an outdoor enthusiast's playground, or a hunting retreat, this land offers a backdrop of unparalleled beauty and tranquility that's hard to find.

**Minneapolis Landscape Services** is a member of the National Association of Realtors (NAR) and is a member of the Minnesota State Board of Realtors (MSBR). We are proud to be a part of the Service of Minnesota, Inc Broker Reciprocity (sm) program, allowing us to list properties in all 50 states and Canada. All properties are subject to prior sale, change or withdrawal.

**Lot Dimensions** 1019x1262x329x1348x1329x2598

**School District** 31

**Taxes** \$252



Call Affinity Real Estate

**218-237-3333**

info@affinityrealestate.com



Affinity Real Estate - 600 Park Avenue South - Park Rapids MN 56470



website: [www.AffinityRealEstate.com](http://www.AffinityRealEstate.com) | email: [info@affinityrealestate.com](mailto:info@affinityrealestate.com) | office: 218-237-3333 | fax: 218-237-3377



**\$135,000**  
 MLS 6798004 Land  
 Parcel #3 TBD County 9  
 Becida MN 56678



website: [www.AffinityRealEstate.com](http://www.AffinityRealEstate.com) | email: [info@affinityrealestate.com](mailto:info@affinityrealestate.com) | office: 218-237-3333 | fax: 218-237-3377



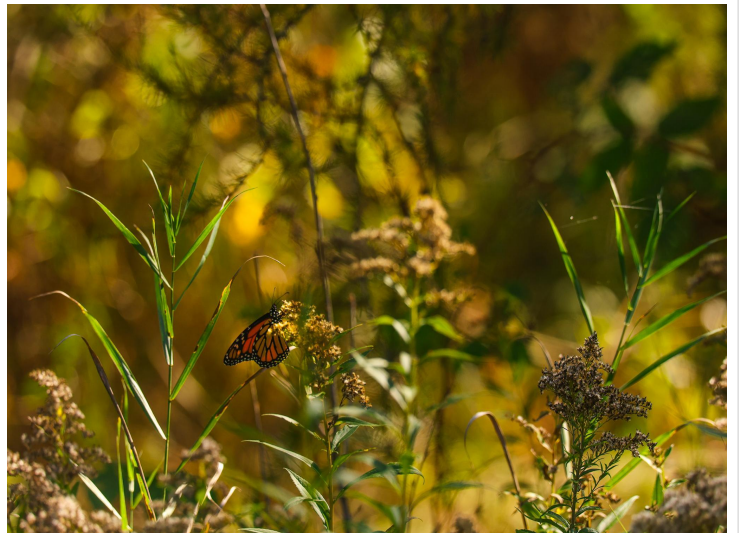
**\$135,000**  
MLS 6798004 Land  
Parcel #3 TBD County 9  
Becida MN 56678



website: [www.AffinityRealEstate.com](http://www.AffinityRealEstate.com) | email: [info@affinityrealestate.com](mailto:info@affinityrealestate.com) | office: 218-237-3333 | fax: 218-237-3377



**\$135,000**  
 MLS 6798004 Land  
 Parcel #3 TBD County 9  
 Becida MN 56678



website: [www.AffinityRealEstate.com](http://www.AffinityRealEstate.com) | email: [info@affinityrealestate.com](mailto:info@affinityrealestate.com) | office: 218-237-3333 | fax: 218-237-3377



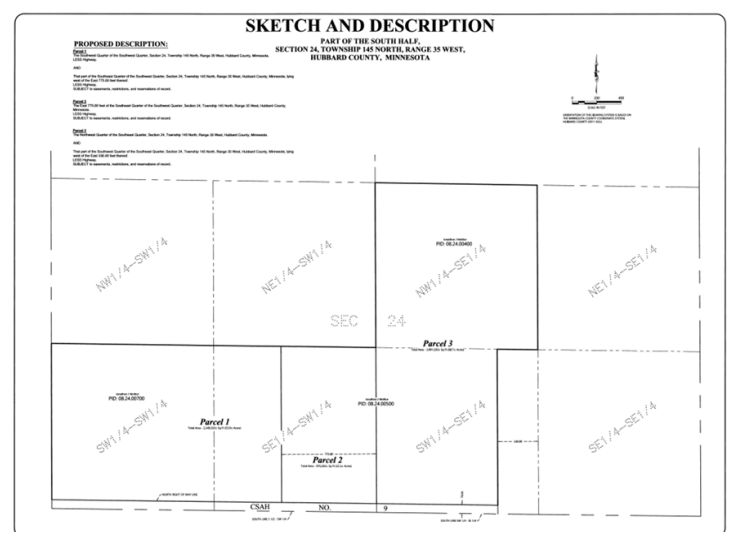
**\$135,000**  
 MLS 6798004 Land  
 Parcel #3 TBD County 9  
 Becida MN 56678



website: [www.AffinityRealEstate.com](http://www.AffinityRealEstate.com) | email: [info@affinityrealestate.com](mailto:info@affinityrealestate.com) | office: 218-237-3333 | fax: 218-237-3377



**\$135,000**  
MLS 6798004 Land  
Parcel #3 TBD County 9  
Becida MN 56678



Page 7 of 7