



MLS 6798225 Land

**\$425,000**

5.3 Acres  
Raw Land

Tract B HWY 371  
Brainerd MN 56401

Status: Active

#### Description:

Unlock the potential of this highly visible  $\pm$  5.3 acre commercial parcel located along the thriving Hwy 371 corridor, located just north of the Brainerd International Raceway and just south of Dunmire's on the Lake. Additional land gives you the option to acquire almost 22 acres, this property offers exceptional flexibility for a variety of commercial uses. Ideal for office, retail, storage, warehouse, or outdoor display, this site features outstanding highway exposure and multiple access points, making it perfect for high-traffic development. Take advantage of this rare opportunity to secure a prime location in one of the region's most active commercial corridors. Subject to platting.

#### Additional Details:

Lot Acres	5.3
Lot Dimensions	445x Irregular
School District	181
Taxes	(unreported)
Taxes with Assessments	(unreported)
Tax Year	2025

#### Additional Features:

#### Driving Directions:

From the Baxter Hwy 371 / Hwy 210 stoplight intersection - North on Hwy 371 approx. 6.5 miles - Property is on the East side of Hwy 371, just south of White Gables Road



Listed By:  
RE/MAX Results - Nisswa

Affinity Real Estate Inc. participates in the Regional Multiple Listing Service of Minnesota, Inc Broker Reciprocity (sm) program, allowing us to display other broker's listings on our website. All properties are subject to prior sale, change or withdrawal.



Call Affinity Real Estate

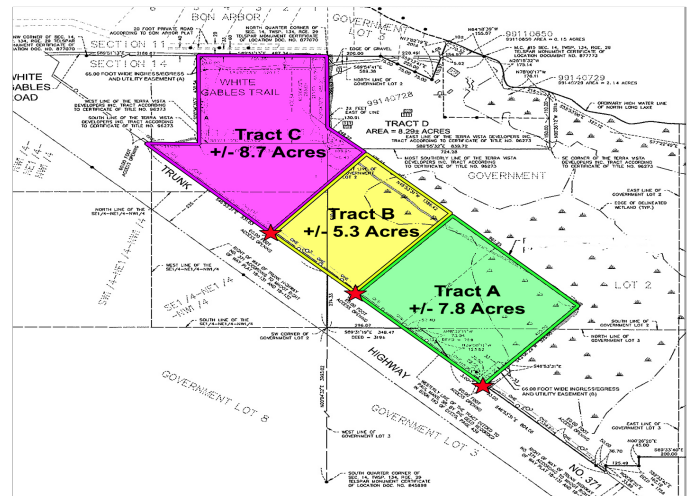
**218-237-3333**

[info@affinityrealestate.com](mailto:info@affinityrealestate.com)



Affinity Real Estate - 600 Park Avenue South - Park Rapids MN 56470





website: [www.AffinityRealEstate.com](http://www.AffinityRealEstate.com) | email: [info@affinityrealestate.com](mailto:info@affinityrealestate.com) | office: 218-237-3333 | fax: 218-237-3377



**\$425,000**  
MLS 6798225 Land  
Tract B HWY 371  
Brainerd MN 56401





website: [www.AffinityRealEstate.com](http://www.AffinityRealEstate.com) | email: [info@affinityrealestate.com](mailto:info@affinityrealestate.com) | office: 218-237-3333 | fax: 218-237-3377



**\$425,000**  
MLS 6798225 Land  
Tract B HWY 371  
Brainerd MN 56401





website: [www.AffinityRealEstate.com](http://www.AffinityRealEstate.com) | email: [info@affinityrealestate.com](mailto:info@affinityrealestate.com) | office: 218-237-3333 | fax: 218-237-3377



**\$425,000**  
MLS 6798225 Land  
Tract B HWY 371  
Brainerd MN 56401