



MLS 6798268 Land

\$525,000

8.7 Acres
Raw Land

Tract C Hwy 371
Brainerd MN 56401

Status: Active

Description:

Unlock the potential of this highly visible ± 8.7 -acre commercial parcel located along the thriving Hwy 371 corridor, located just north of the Brainerd International Raceway and just south of Dunmire's on the Lake. Additional land gives you the option to acquire almost 22 acres, this property offers exceptional flexibility for a variety of commercial uses. Ideal for office, retail, storage, warehouse, or outdoor display, this site features outstanding highway exposure and multiple access points, making it perfect for high-traffic development. Take advantage of this rare opportunity to secure a prime location in one of the region's most active commercial corridors. Subject to platting.

Additional Details:

Lot Acres	8.7
Lot Dimensions	635xIrregular
School District	181
Taxes	(unreported)
Taxes with Assessments	(unreported)
Tax Year	2025

Additional Features:

Driving Directions:

From the Baxter Hwy 371 / Hwy 210 stoplight intersection - North on Hwy 371 approx. 6.5 miles - Property is on the East side of Hwy 371, just south of White Gables Road



Listed By:
RE/MAX Results - Nisswa

Affinity Real Estate Inc. participates in the Regional Multiple Listing Service of Minnesota, Inc Broker Reciprocity (sm) program, allowing us to display other broker's listings on our website. All properties are subject to prior sale, change or withdrawal.



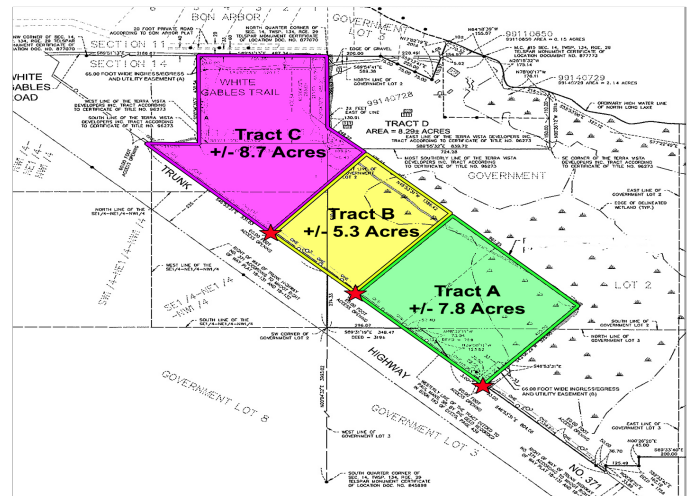
Call Affinity Real Estate

218-237-3333

info@affinityrealestate.com



Affinity Real Estate - 600 Park Avenue South - Park Rapids MN 56470



website: www.AffinityRealEstate.com | email: info@affinityrealestate.com | office: 218-237-3333 | fax: 218-237-3377



\$525,000
 MLS 6798268 Land
 Tract C Hwy 371
 Brainerd MN 56401



website: www.AffinityRealEstate.com | email: info@affinityrealestate.com | office: 218-237-3333 | fax: 218-237-3377



\$525,000
MLS 6798268 Land
Tract C Hwy 371
Brainerd MN 56401



website: www.AffinityRealEstate.com | email: info@affinityrealestate.com | office: 218-237-3333 | fax: 218-237-3377



\$525,000
 MLS 6798268 Land
 Tract C Hwy 371
 Brainerd MN 56401