



MLS 6798279 Residential

\$415,000

2,898 sq ft
4 bedrooms
3 baths

15171 Elm Drive
Detroit Lakes MN 56501

Status: Pending

Description:

Charming 1-Story Home on 4.5 Acres in the Heart of Detroit Lakes! Nestled on two spacious lots and surrounded by nature and nearby lakes, this 1-story home offers the perfect balance of comfort and serenity. Step inside to an open main level featuring stunning wood beams in the living room and a cozy fireplace, plus a second fireplace in the dining area that creates a warm, inviting atmosphere. The main floor includes 3 bedrooms, including a primary suite with a private bathroom. The lower level provides even more living space with an additional bedroom, bathroom, a bonus room with a third fireplace, and plenty of storage. Enjoy the outdoors from your sunroom overlooking the beautiful backyard oasis—ideal for relaxation or entertaining. With 4.5 acres of space, this property offers privacy and room to roam while still being close to everything Detroit Lakes has to offer!

Additional Details:

Year Built	1977
Lot Acres	4.5
Lot Dimensions	Irregular
Garage Stalls	2
School District	1074
Taxes	\$2,788
Taxes with Assessments	\$2,788
Tax Year	2025

Additional Features:

Fuel: Array **Heat:** Forced Air

Driving Directions:

Take I-94 East from Fargo ? Exit 54 (US-59 North) toward Detroit Lakes ? Continue on US-59 North ? Turn right on County Rd 22 ? Turn left on Elm Dr ? 15171 Elm Dr.



Listed By:
eXp Realty (3788 FGO)

Affinity Real Estate Inc. participates in the Regional Multiple Listing Service of Minnesota, Inc Broker Reciprocity (sm) program, allowing us to display other broker's listings on our website. All properties are subject to prior sale, change or withdrawal.



Call Affinity Real Estate

218-237-3333

info@affinityrealestate.com



Affinity Real Estate - 600 Park Avenue South - Park Rapids MN 56470



website: www.AffinityRealEstate.com | email: info@affinityrealestate.com | office: 218-237-3333 | fax: 218-237-3377



\$415,000
 MLS 6798279 Residential
 15171 Elm Drive
 Detroit Lakes MN 56501



website: www.AffinityRealEstate.com | email: info@affinityrealestate.com | office: 218-237-3333 | fax: 218-237-3377



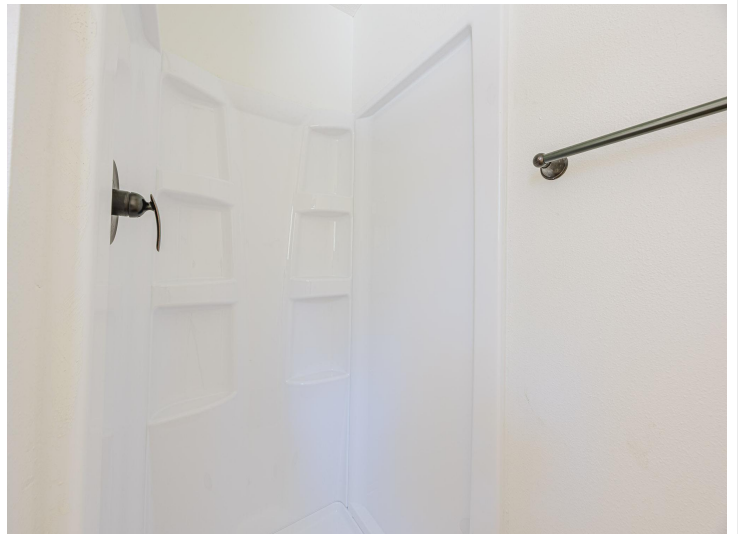
\$415,000
 MLS 6798279 Residential
 15171 Elm Drive
 Detroit Lakes MN 56501



website: www.AffinityRealEstate.com | email: info@affinityrealestate.com | office: 218-237-3333 | fax: 218-237-3377



\$415,000
MLS 6798279 Residential
15171 Elm Drive
Detroit Lakes MN 56501



website: www.AffinityRealEstate.com | email: info@affinityrealestate.com | office: 218-237-3333 | fax: 218-237-3377



\$415,000
 MLS 6798279 Residential
 15171 Elm Drive
 Detroit Lakes MN 56501



website: www.AffinityRealEstate.com | email: info@affinityrealestate.com | office: 218-237-3333 | fax: 218-237-3377



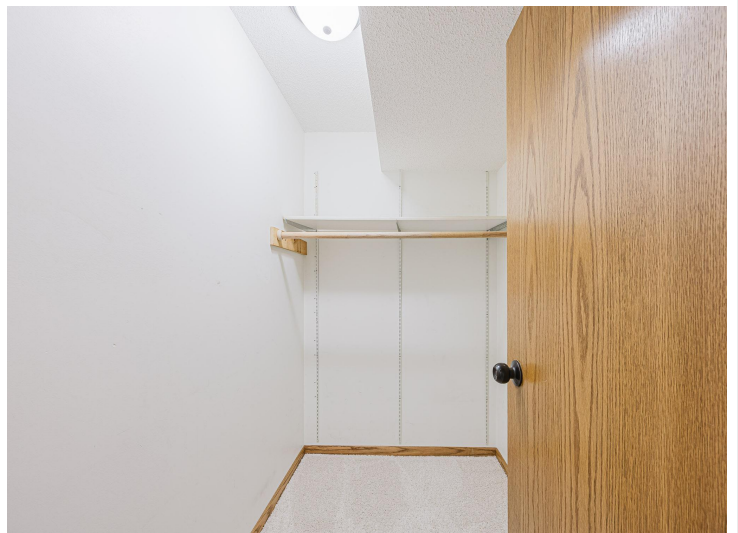
\$415,000
 MLS 6798279 Residential
 15171 Elm Drive
 Detroit Lakes MN 56501



website: www.AffinityRealEstate.com | email: info@affinityrealestate.com | office: 218-237-3333 | fax: 218-237-3377



\$415,000
MLS 6798279 Residential
15171 Elm Drive
Detroit Lakes MN 56501



website: www.AffinityRealEstate.com | email: info@affinityrealestate.com | office: 218-237-3333 | fax: 218-237-3377



\$415,000
MLS 6798279 Residential
15171 Elm Drive
Detroit Lakes MN 56501



website: www.AffinityRealEstate.com | email: info@affinityrealestate.com | office: 218-237-3333 | fax: 218-237-3377

Affinity
REAL ESTATE INC

\$415,000
MLS 6798279 Residential
15171 Elm Drive
Detroit Lakes MN 56501



website: www.AffinityRealEstate.com | email: info@affinityrealestate.com | office: 218-237-3333 | fax: 218-237-3377



\$415,000
MLS 6798279 Residential
15171 Elm Drive
Detroit Lakes MN 56501