



MLS 6798422 Lake Home

**\$309,900**

1,400 sq ft  
2 bedrooms  
2 baths

25448 Oslo Way  
Nisswa MN 56468

Waterfront: Clark

Status: Coming Soon

#### Description:

Experience the ease of one-level living in this 55+ townhome community located in heart of Nisswa. This inviting home features 2 bedrooms, 2 baths, an open floor plan with vaulted ceilings, and a gas fireplace. An amazing view of Clark Lake brings the beauty of mother nature right into your living room. The primary bedroom offers a walk-in closet and private full bathroom. The versatile second bedroom, also with a walk-in closet, is perfect as a guest room, home office, or creative craft space. Enjoy maintenance free living in this sought-after community, ideally located near downtown Nisswa, the scenic Paul Bunyan Trail, and numerous shops and restaurants that bring the best of small-town charm to your doorstep.

#### Additional Details:

Year Built	1999
Lot Acres	11
Lot Dimensions	500x1106x500x797
Garage Stalls	2
School District	181
Taxes	\$2,612
Taxes with Assessments	\$2,612
Tax Year	2025

#### Additional Features:

**Basement:** Block, Crawl Space, Partial, Storage Space, Unfinished **Fuel:** Natural Gas **Garage:** 2 **Heat:** Forced Air, Fireplace(s) **Sewer:** Shared Septic, Tank with Drainage Field **Water:** Drilled, Shared System **Air Conditioning:** Central Air

#### Driving Directions:

From Holiday gas station in Nisswa- North on 371 to Right on County Rd 18 to Right on Norway Lane



Listed By:  
Kurilla Real Estate LTD

Affinity Real Estate Inc. participates in the Regional Multiple Listing Service of Minnesota, Inc Broker Reciprocity (sm) program, allowing us to display other broker's listings on our website. All properties are subject to prior sale, change or withdrawal.



Call Affinity Real Estate

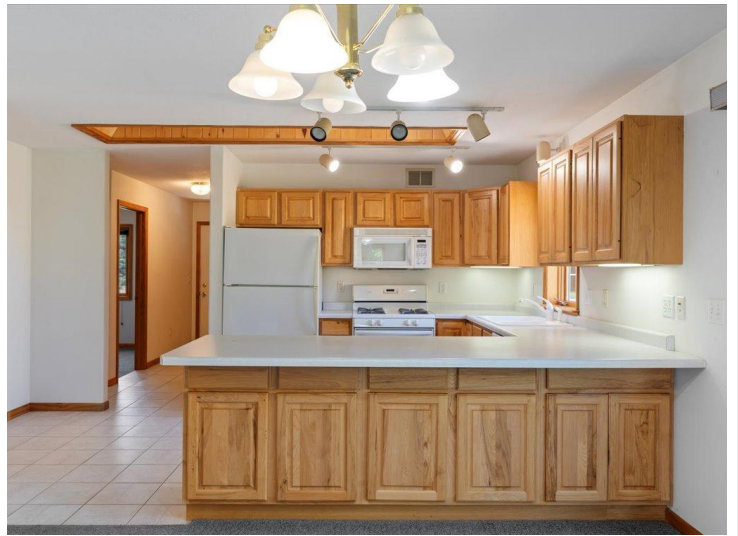
**218-237-3333**

[info@affinityrealestate.com](mailto:info@affinityrealestate.com)



Affinity Real Estate - 600 Park Avenue South - Park Rapids MN 56470





website: [www.AffinityRealEstate.com](http://www.AffinityRealEstate.com) | email: [info@affinityrealestate.com](mailto:info@affinityrealestate.com) | office: 218-237-3333 | fax: 218-237-3377



**\$309,900**  
 MLS 6798422 Lake Home  
 25448 Oslo Way  
 Nisswa MN 56468



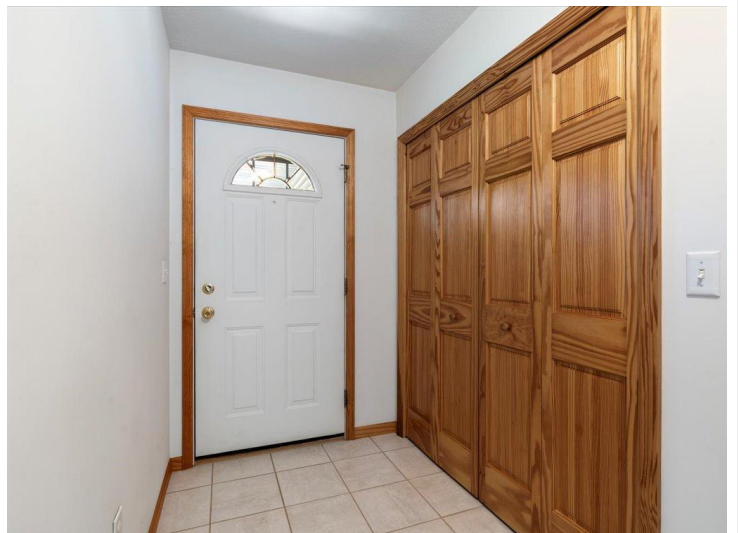


website: [www.AffinityRealEstate.com](http://www.AffinityRealEstate.com) | email: [info@affinityrealestate.com](mailto:info@affinityrealestate.com) | office: 218-237-3333 | fax: 218-237-3377

**Affinity**  
REAL ESTATE INC

**\$309,900**  
MLS 6798422 Lake Home  
25448 Oslo Way  
Nisswa MN 56468





website: [www.AffinityRealEstate.com](http://www.AffinityRealEstate.com) | email: [info@affinityrealestate.com](mailto:info@affinityrealestate.com) | office: 218-237-3333 | fax: 218-237-3377



**\$309,900**  
 MLS 6798422 Lake Home  
 25448 Oslo Way  
 Nisswa MN 56468





website: [www.AffinityRealEstate.com](http://www.AffinityRealEstate.com) | email: [info@affinityrealestate.com](mailto:info@affinityrealestate.com) | office: 218-237-3333 | fax: 218-237-3377



**\$309,900**  
 MLS 6798422 Lake Home  
 25448 Oslo Way  
 Nisswa MN 56468





website: [www.AffinityRealEstate.com](http://www.AffinityRealEstate.com) | email: [info@affinityrealestate.com](mailto:info@affinityrealestate.com) | office: 218-237-3333 | fax: 218-237-3377



**\$309,900**

MLS 6798422 Lake Home  
25448 Oslo Way  
Nisswa MN 56468