



MLS 6798634 Residential

**\$1,399,900**

4,340 sq ft  
6 bedrooms  
4 baths

42221 Ukkelberg Drive  
Clitherall MN 56524

Status: Active

**Description:**

First time on the market for this beautifully updated, quality built, year-round home on West Battle Lake. With its crystal clear water and over 5000 acres, West Battle is one of Otter Tail County's finest and most desirable lakes. The home was custom built in 2001 and sits on a perfectly level lot, off a tarred road and at the end of a cul-de-sac. It features 6 bedrooms, 3 1/2 bathrooms (3 full) and a beautiful lakeside sunroom. The laundry (new in 2025) and primary bedroom with a full bath and large walk-in closet are on the first floor. Upstairs there are 5 additional bedrooms, 2 full bathrooms, a gathering/sitting room overlooking the lake, an office and lots of closet space. The completely remodeled, open concept kitchen is a cooks dream. It features upgraded appliances (including 2 full sized refrigerators), white granite counter tops, 2 islands with granite tops and storage below and a designer range hood. Lake side, the home seamlessly flows from the dining room through the kitchen and into the sun room, all with stunning views of the lake. Additional features include a central vacuum system, lawn irrigation, insulated garage and 2 docks that will stay with the home. Be sure to look in the document section for the list of everything that was replaced or added during the major renovation. Whether you are looking for a beautiful summer home, a year-round retreat or a full time residence on West Battle Lake, this property could be the perfect fit.

**Additional Details:**

Year Built	2001
Lot Acres	0.49
Lot Dimensions	144 x 189
Garage Stalls	2
School District	1941
Taxes	\$8,332
Taxes with Assessments	\$8,332
Tax Year	2025

**Additional Features:**

**Basement:** Crawl Space **Fuel:** Array **Garage:** 2 **Heat:** Forced Air, Fireplace(s) **Sewer:** Mound Septic **Water:** Drilled **Air Conditioning:** Central Air

**Driving Directions:**

From Hwy 5 to 415th Ave follow to Ukkelberg drive (East) to the end of Ukkelberg drive to property on Weichert, Realtors - Paulson Land Co



Affinity Real Estate Inc. participates in the Regional Multiple Listing Service of Minnesota, Inc Broker Reciprocity (sm) program, allowing us to display other broker's listings on our website. All properties are subject to prior sale, change or withdrawal.



**Call Affinity Real Estate**

**218-237-3333**

**info@affinityrealestate.com**



**Affinity Real Estate - 600 Park Avenue South - Park Rapids MN 56470**



website: [www.AffinityRealEstate.com](http://www.AffinityRealEstate.com) | email: [info@affinityrealestate.com](mailto:info@affinityrealestate.com) | office: 218-237-3333 | fax: 218-237-3377

**Affinity**  
REAL ESTATE INC

**\$1,399,900**  
MLS 6798634 Residential  
42221 Ukkelberg Drive  
Clitherall MN 56524



website: [www.AffinityRealEstate.com](http://www.AffinityRealEstate.com) | email: [info@affinityrealestate.com](mailto:info@affinityrealestate.com) | office: 218-237-3333 | fax: 218-237-3377

**Affinity**  
REAL ESTATE INC

**\$1,399,900**  
MLS 6798634 Residential  
42221 Ukkelberg Drive  
Clitherall MN 56524



website: [www.AffinityRealEstate.com](http://www.AffinityRealEstate.com) | email: [info@affinityrealestate.com](mailto:info@affinityrealestate.com) | office: 218-237-3333 | fax:218-237-3377



**\$1,399,900**  
MLS 6798634 Residential  
42221 Ukkelberg Drive  
Clitherall MN 56524



website: [www.AffinityRealEstate.com](http://www.AffinityRealEstate.com) | email: [info@affinityrealestate.com](mailto:info@affinityrealestate.com) | office: 218-237-3333 | fax:218-237-3377

**Affinity**  
REAL ESTATE INC

**\$1,399,900**  
MLS 6798634 Residential  
42221 Ukkelberg Drive  
Clitherall MN 56524



website: [www.AffinityRealEstate.com](http://www.AffinityRealEstate.com) | email: [info@affinityrealestate.com](mailto:info@affinityrealestate.com) | office: 218-237-3333 | fax:218-237-3377



**\$1,399,900**  
MLS 6798634 Residential  
42221 Ukkelberg Drive  
Clitherall MN 56524



website: [www.AffinityRealEstate.com](http://www.AffinityRealEstate.com) | email: [info@affinityrealestate.com](mailto:info@affinityrealestate.com) | office: 218-237-3333 | fax:218-237-3377

**Affinity**  
REAL ESTATE INC

**\$1,399,900**  
MLS 6798634 Residential  
42221 Ukkelberg Drive  
Clitherall MN 56524



website: [www.AffinityRealEstate.com](http://www.AffinityRealEstate.com) | email: [info@affinityrealestate.com](mailto:info@affinityrealestate.com) | office: 218-237-3333 | fax: 218-237-3377

**Affinity**  
REAL ESTATE INC

**\$1,399,900**  
MLS 6798634 Residential  
42221 Ukkelberg Drive  
Clitherall MN 56524



website: [www.AffinityRealEstate.com](http://www.AffinityRealEstate.com) | email: [info@affinityrealestate.com](mailto:info@affinityrealestate.com) | office: 218-237-3333 | fax: 218-237-3377



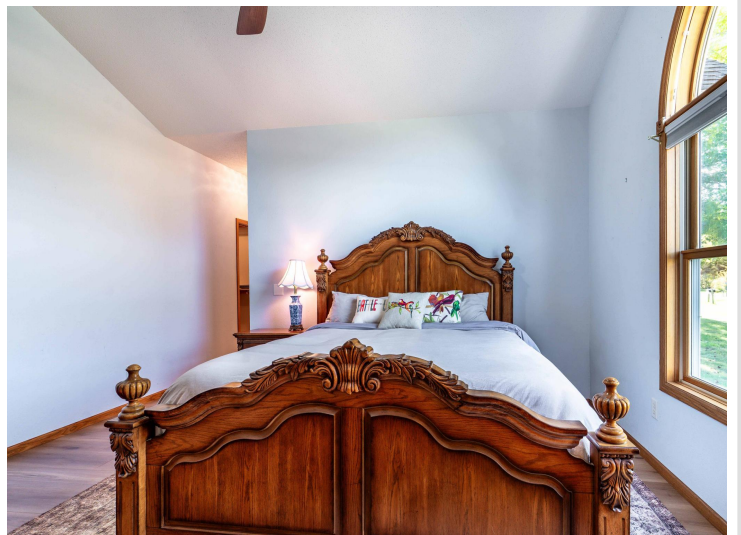
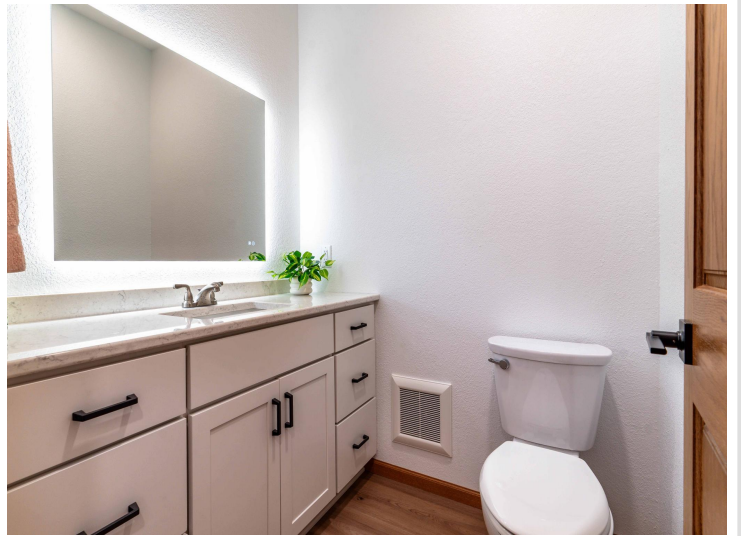
**\$1,399,900**  
MLS 6798634 Residential  
42221 Ukkelberg Drive  
Clitherall MN 56524



website: [www.AffinityRealEstate.com](http://www.AffinityRealEstate.com) | email: [info@affinityrealestate.com](mailto:info@affinityrealestate.com) | office: 218-237-3333 | fax:218-237-3377

**Affinity**  
REAL ESTATE INC

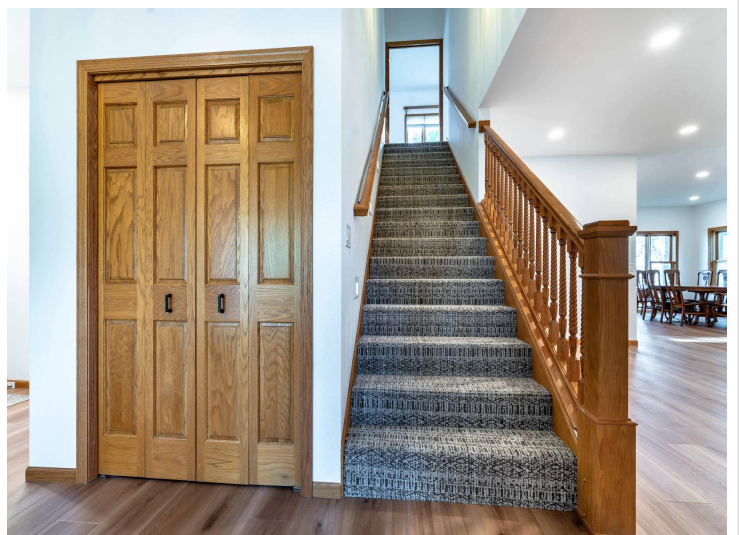
**\$1,399,900**  
MLS 6798634 Residential  
42221 Ukkelberg Drive  
Clitherall MN 56524



website: [www.AffinityRealEstate.com](http://www.AffinityRealEstate.com) | email: [info@affinityrealestate.com](mailto:info@affinityrealestate.com) | office: 218-237-3333 | fax:218-237-3377



**\$1,399,900**  
MLS 6798634 Residential  
42221 Ukkelberg Drive  
Clitherall MN 56524



website: [www.AffinityRealEstate.com](http://www.AffinityRealEstate.com) | email: [info@affinityrealestate.com](mailto:info@affinityrealestate.com) | office: 218-237-3333 | fax:218-237-3377



**\$1,399,900**  
MLS 6798634 Residential  
42221 Ukkelberg Drive  
Clitherall MN 56524



website: [www.AffinityRealEstate.com](http://www.AffinityRealEstate.com) | email: [info@affinityrealestate.com](mailto:info@affinityrealestate.com) | office: 218-237-3333 | fax: 218-237-3377

**Affinity**  
REAL ESTATE INC

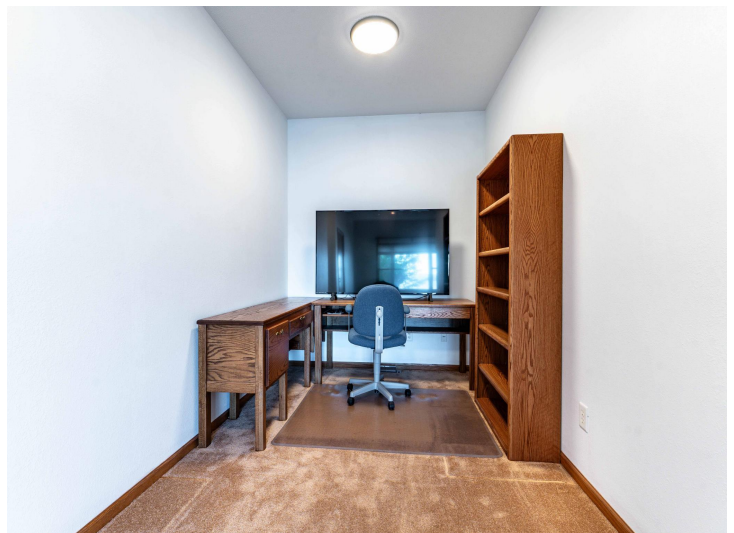
**\$1,399,900**  
MLS 6798634 Residential  
42221 Ukkelberg Drive  
Clitherall MN 56524



website: [www.AffinityRealEstate.com](http://www.AffinityRealEstate.com) | email: [info@affinityrealestate.com](mailto:info@affinityrealestate.com) | office: 218-237-3333 | fax: 218-237-3377

**Affinity**  
REAL ESTATE INC

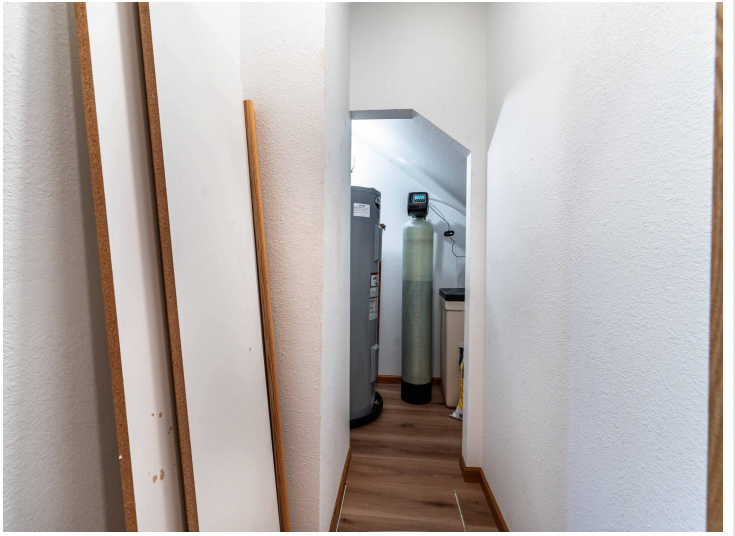
**\$1,399,900**  
MLS 6798634 Residential  
42221 Ukkelberg Drive  
Clitherall MN 56524



website: [www.AffinityRealEstate.com](http://www.AffinityRealEstate.com) | email: [info@affinityrealestate.com](mailto:info@affinityrealestate.com) | office: 218-237-3333 | fax:218-237-3377



**\$1,399,900**  
MLS 6798634 Residential  
42221 Ukkelberg Drive  
Clitherall MN 56524



website: [www.AffinityRealEstate.com](http://www.AffinityRealEstate.com) | email: [info@affinityrealestate.com](mailto:info@affinityrealestate.com) | office: 218-237-3333 | fax:218-237-3377

**Affinity**  
REAL ESTATE INC

**\$1,399,900**  
MLS 6798634 Residential  
42221 Ukkelberg Drive  
Clitherall MN 56524



website: [www.AffinityRealEstate.com](http://www.AffinityRealEstate.com) | email: [info@affinityrealestate.com](mailto:info@affinityrealestate.com) | office: 218-237-3333 | fax:218-237-3377

**Affinity**  
REAL ESTATE INC

**\$1,399,900**  
MLS 6798634 Residential  
42221 Ukkelberg Drive  
Clitherall MN 56524



website: [www.AffinityRealEstate.com](http://www.AffinityRealEstate.com) | email: [info@affinityrealestate.com](mailto:info@affinityrealestate.com) | office: 218-237-3333 | fax:218-237-3377



**\$1,399,900**  
MLS 6798634 Residential  
42221 Ukkelberg Drive  
Clitherall MN 56524



website: [www.AffinityRealEstate.com](http://www.AffinityRealEstate.com) | email: [info@affinityrealestate.com](mailto:info@affinityrealestate.com) | office: 218-237-3333 | fax:218-237-3377

**Affinity**  
REAL ESTATE INC

**\$1,399,900**  
MLS 6798634 Residential  
42221 Ukkelberg Drive  
Clitherall MN 56524