



MLS 6798871 Commercial

\$795,000

1435 Anne Street
Bemidji MN 56601

Status: Active

Description:

Unique commercial property opportunity! Log office building on highly traveled Anne St that features multiple outbuildings with an oversized garage, landscaping, blacktopped drive, 17+ space parking lot, elevator, door-side drop off, and many fruit trees. Interior features include a spacious lobby, seven offices, four bathrooms (two also have a shower each), a kitchen, and a conference room/flex room. Come visit this versatile property today!

Additional Details:

Year Built	1994
Lot Acres	1.03
Lot Dimensions	150x300
Garage Stalls	2
School District	31
Taxes	\$7,267
Taxes with Assessments	\$7,267
Tax Year	2025

Additional Features:

Basement: Egress Window(s), Finished, Full, Shared Access **Fuel:** Electric, Natural Gas **Garage:** 2 **Heat:** Baseboard, Forced Air **Sewer:** City Sewer/Connected, Private Sewer **Water:** City Water/Connected, Private, Well **Air Conditioning:** Central Air

Driving Directions:

From the junction of Hwy 71 and Hwy 197, head north on Hwy 71, keep right on the roundabout to Anne St. Continue to 1435 Anne St on the left.



Listed By:
Realty Experts, LLC

Affinity Real Estate Inc. participates in the Regional Multiple Listing Service of Minnesota, Inc Broker Reciprocity (sm) program, allowing us to display other broker's listings on our website. All properties are subject to prior sale, change or withdrawal.



Call Affinity Real Estate

218-237-3333

info@affinityrealestate.com



Affinity Real Estate - 600 Park Avenue South - Park Rapids MN 56470



website: www.AffinityRealEstate.com | email: info@affinityrealestate.com | office: 218-237-3333 | fax: 218-237-3377

Affinity
REAL ESTATE INC

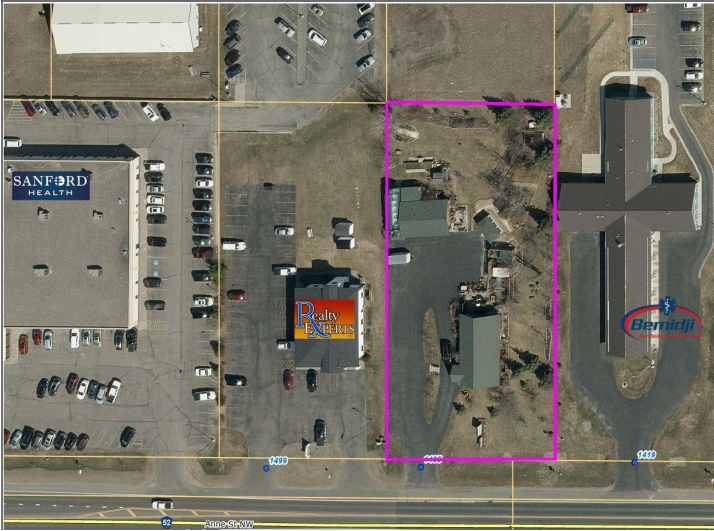
\$795,000
MLS 6798871 Commercial
1435 Anne Street
Bemidji MN 56601



website: www.AffinityRealEstate.com | email: info@affinityrealestate.com | office: 218-237-3333 | fax: 218-237-3377

Affinity
REAL ESTATE INC

\$795,000
MLS 6798871 Commercial
1435 Anne Street
Bemidji MN 56601



website: www.AffinityRealEstate.com | email: info@affinityrealestate.com | office: 218-237-3333 | fax: 218-237-3377



\$795,000
 MLS 6798871 Commercial
 1435 Anne Street
 Bemidji MN 56601