



MLS 6799245 Residential

\$389,900

2,674 sq ft
5 bedrooms
3 baths

113 Sumac Drive
Alexandria MN 56308

Status: Coming Soon

Description:

Location, Location, Location! This well-maintained, one-owner home on Sumac Drive is ready for you! Check the box for convenience - it is situated near the Central Lakes Trail and Lake Geneva, and just minutes from downtown Alexandria. Move right in as-is or bring your personal touch to make it your own. Inside, you'll find three bedrooms and main-floor laundry, including a comfortable Owner's ensuite. The lower level expands your living space with two additional bedrooms and abundant storage. Recent updates include a new roof in 2025 and a freshly stained deck. The spacious 12' x 20' shed in the backyard offers plenty of room to store all of your yard tools or creating the ultimate outdoor workshop. Don't miss your chance to own a quality home in a sought-after neighborhood!

Additional Details:

Year Built	1999
Lot Acres	0.31
Lot Dimensions	102 136 93 140
Garage Stalls	2
School District	206
Taxes	\$3,678
Taxes with Assessments	\$3,678
Tax Year	2025

Additional Features:

Basement: Walkout **Fuel:** Natural Gas **Garage:** 2 **Heat:** Forced Air **Sewer:** City Sewer/Connected **Water:** City Water/Connected **Air Conditioning:** Central Air

Driving Directions:

County Rd 82 E, Turn left on Linden Ave, Turn left on Sumac Dr, House on right



Listed By:
ALO Realty Advisors

Affinity Real Estate Inc. participates in the Regional Multiple Listing Service of Minnesota, Inc Broker Reciprocity (sm) program, allowing us to display other broker's listings on our website. All properties are subject to prior sale, change or withdrawal.



Call Affinity Real Estate

218-237-3333

info@affinityrealestate.com



Affinity Real Estate - 600 Park Avenue South - Park Rapids MN 56470



website: www.AffinityRealEstate.com | email: info@affinityrealestate.com | office: 218-237-3333 | fax: 218-237-3377



\$389,900
 MLS 6799245 Residential
 113 Sumac Drive
 Alexandria MN 56308



website: www.AffinityRealEstate.com | email: info@affinityrealestate.com | office: 218-237-3333 | fax: 218-237-3377



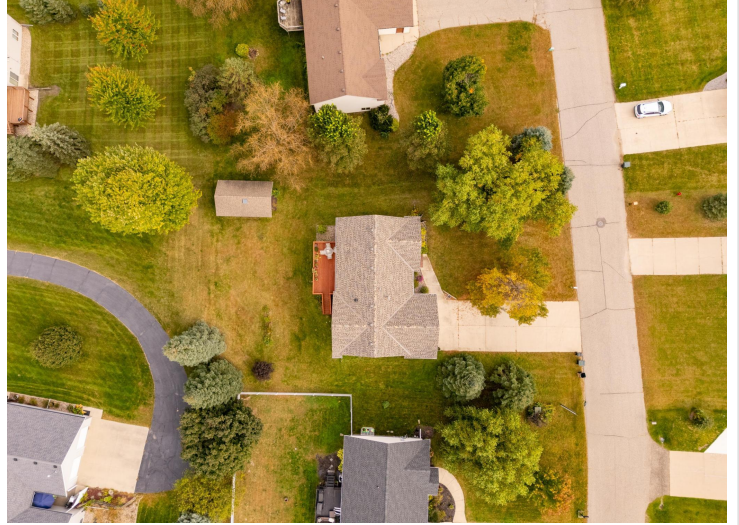
\$389,900
 MLS 6799245 Residential
 113 Sumac Drive
 Alexandria MN 56308



website: www.AffinityRealEstate.com | email: info@affinityrealestate.com | office: 218-237-3333 | fax: 218-237-3377



\$389,900
 MLS 6799245 Residential
 113 Sumac Drive
 Alexandria MN 56308



website: www.AffinityRealEstate.com | email: info@affinityrealestate.com | office: 218-237-3333 | fax: 218-237-3377



\$389,900
 MLS 6799245 Residential
 113 Sumac Drive
 Alexandria MN 56308

website: www.AffinityRealEstate.com | email: info@affinityrealestate.com | office: 218-237-3333 | fax:218-237-3377



\$389,900

MLS 6799245 Residential
113 Sumac Drive
Alexandria MN 56308

website: www.AffinityRealEstate.com | email: info@affinityrealestate.com | office: 218-237-3333 | fax:218-237-3377



\$389,900

MLS 6799245 Residential
113 Sumac Drive
Alexandria MN 56308