



MLS 6799429 Commercial

\$2,500,000

19222 Echo Ridge Drive
Nevis MN 56467

Waterfront: Sixth Crow Wing

Status: Pending

Description:

Royal Starr Resort -- A rare opportunity to own a thriving family fishing resort on the quiet shores of Sixth Crow Wing Lake!

Pride of ownership radiates from every corner of this property. Perfectly located in the heart of Minnesota's lake country and just minutes from the bustling tourism towns of Nevis, Park Rapids, Walker, and Dorset, this resort is a rare find and a true gem. It is secluded, private, and the surroundings are nothing but sheer beauty.

Royal Starr offers 13 well maintained cabins, all with efficient mini split A/C units. Additionally, 6 of the cabins have in-floor heat and can be rented year round. Other features include a quaint lodge, 3 bedroom 2 bathroom owner's home, a heated 24' x 56' laundry and shop area, spacious level grounds, huge sandy beach and a brand-new 42' x 60' Morton building ideal for storage or expanding resort operations.

This resort property is considered 'turn key', meaning all the buildings, grounds and equipment are in excellent condition, all cabins are well appointed with up-to-date furnishings, and the financials show continued growth year over year. No initial capital outlay needed!

Adding to the appeal, most of the 41 acres are undeveloped. This offers endless possibilities for future growth and expansion. Additional cabins? Seasonal RV sites? Tiny homes? Come with your ideas!

Included in the sale is an extensive inventory of quality equipment. This resort is a well oiled machine. All needed equipment and systems are in place to make for a streamlined operation requiring few employees. It is currently run by just two people during the week, with added cleaning staff on change over days.

Here is an opportunity to own a profitable business with significant growth potential and get the lifestyle change you are looking for. Your search ends here! Invest in this proven destination that is perfectly positioned for continued success and growth.

Additional Details:

Year Built 1946

Listed By 11.15
Lake County Resort Sales, Inc.
1421 x 1340 x 1197 x 1352

Affinity Real Estate Inc. participates in the Regional Multiple Listing Service of Minnesota, Inc Broker Reciprocity (sm) program, allowing us to display other broker's listings on our website. All properties are subject to prior sale, change or withdrawal.

Taxes with Assessments \$11,362

Tax Year 2025



Call Affinity Real Estate

218-237-3333

info@affinityrealestate.com



Affinity Real Estate - 600 Park Avenue South - Park Rapids MN 56470

Additional Features:

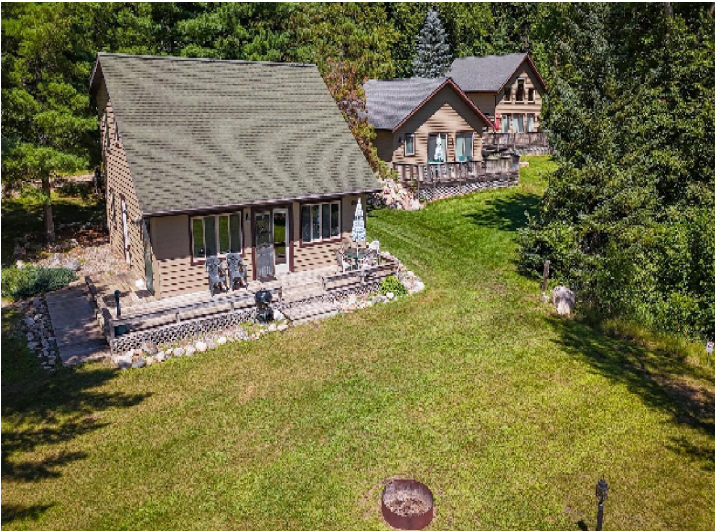


website: www.AffinityRealEstate.com | email: info@affinityrealestate.com | office: 218-237-3333 | fax: 218-237-3377



\$2,500,000

MLS 6799429 Commercial
19222 Echo Ridge Drive
Nevis MN 56467



website: www.AffinityRealEstate.com | email: info@affinityrealestate.com | office: 218-237-3333 | fax: 218-237-3377

Affinity
REAL ESTATE INC

\$2,500,000

MLS 6799429 Commercial
19222 Echo Ridge Drive
Nevis MN 56467



website: www.AffinityRealEstate.com | email: info@affinityrealestate.com | office: 218-237-3333 | fax: 218-237-3377

Affinity
REAL ESTATE INC

\$2,500,000

MLS 6799429 Commercial
19222 Echo Ridge Drive
Nevis MN 56467



website: www.AffinityRealEstate.com | email: info@affinityrealestate.com | office: 218-237-3333 | fax: 218-237-3377

Affinity
REAL ESTATE INC

\$2,500,000
MLS 6799429 Commercial
19222 Echo Ridge Drive
Nevis MN 56467



website: www.AffinityRealEstate.com | email: info@affinityrealestate.com | office: 218-237-3333 | fax: 218-237-3377

Affinity
REAL ESTATE INC

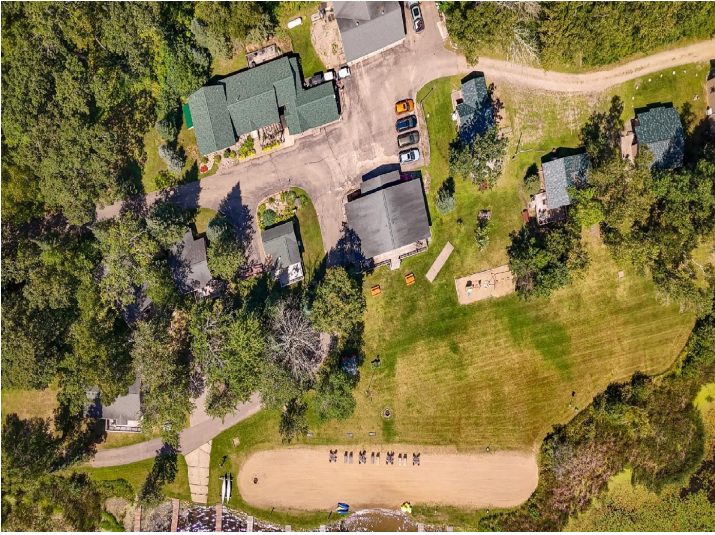
\$2,500,000
MLS 6799429 Commercial
19222 Echo Ridge Drive
Nevis MN 56467



website: www.AffinityRealEstate.com | email: info@affinityrealestate.com | office: 218-237-3333 | fax: 218-237-3377

Affinity
REAL ESTATE INC

\$2,500,000
MLS 6799429 Commercial
19222 Echo Ridge Drive
Nevis MN 56467



website: www.AffinityRealEstate.com | email: info@affinityrealestate.com | office: 218-237-3333 | fax: 218-237-3377

Affinity
REAL ESTATE INC

\$2,500,000
MLS 6799429 Commercial
19222 Echo Ridge Drive
Nevis MN 56467



website: www.AffinityRealEstate.com | email: info@affinityrealestate.com | office: 218-237-3333 | fax: 218-237-3377



\$2,500,000

MLS 6799429 Commercial
19222 Echo Ridge Drive
Nevis MN 56467



website: www.AffinityRealEstate.com | email: info@affinityrealestate.com | office: 218-237-3333 | fax: 218-237-3377



\$2,500,000
 MLS 6799429 Commercial
 19222 Echo Ridge Drive
 Nevis MN 56467



website: www.AffinityRealEstate.com | email: info@affinityrealestate.com | office: 218-237-3333 | fax: 218-237-3377

Affinity
REAL ESTATE INC

\$2,500,000

MLS 6799429 Commercial
19222 Echo Ridge Drive
Nevis MN 56467



website: www.AffinityRealEstate.com | email: info@affinityrealestate.com | office: 218-237-3333 | fax: 218-237-3377



\$2,500,000
 MLS 6799429 Commercial
 19222 Echo Ridge Drive
 Nevis MN 56467