



MLS 6799881 Residential

\$254,900

2,700 sq ft
3 bedrooms
2 baths

2520 Calihan Avenue
Bemidji MN 56601

Status: Active

Description:

Well-maintained 3+ bedroom, 2 bath one-story home. Main floor living room with a corner gas fireplace, kitchen with oak cabinets, dining room, three bedrooms, and a full bath. The lower level features a family room with an entertainment bar, a large un-egressed bedroom, laundry facilities, a 3/4 bath, and a spacious storage room.

Additional Details:

Year Built	1966
Lot Acres	0.19
Lot Dimensions	50x150
Garage Stalls	2
School District	31
Taxes	\$2,662
Taxes with Assessments	\$2,848
Tax Year	2025

Additional Features:

Basement: Block, Finished, Full, Storage Space **Fuel:** Natural Gas **Garage:** 2 **Heat:** Forced Air, Fireplace(s) **Sewer:** City Sewer/Connected
Water: City Water/Connected **Air Conditioning:** Central Air

Driving Directions:

2520 Calihan Ave NE, Bemidji



Listed By:
Century 21 Atwood

Affinity Real Estate Inc. participates in the Regional Multiple Listing Service of Minnesota, Inc Broker Reciprocity (sm) program, allowing us to display other broker's listings on our website. All properties are subject to prior sale, change or withdrawal.



Call Affinity Real Estate

218-237-3333

info@affinityrealestate.com



Affinity Real Estate - 600 Park Avenue South - Park Rapids MN 56470



website: www.AffinityRealEstate.com | email: info@affinityrealestate.com | office: 218-237-3333 | fax: 218-237-3377

Affinity
REAL ESTATE INC

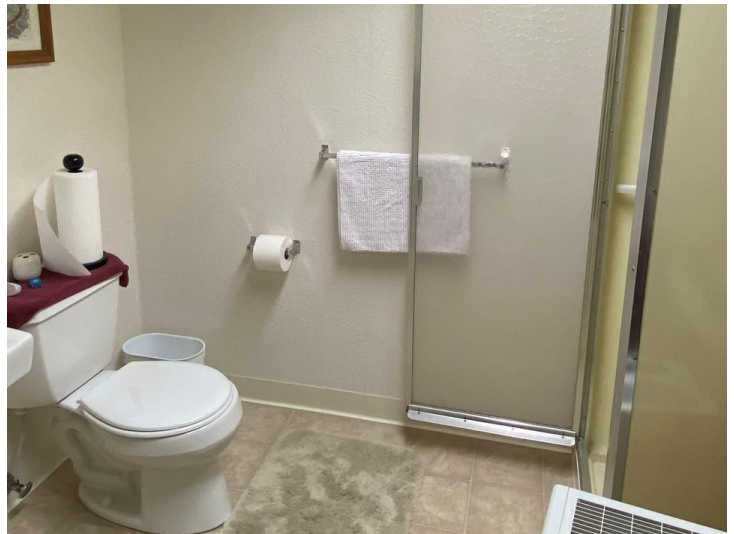
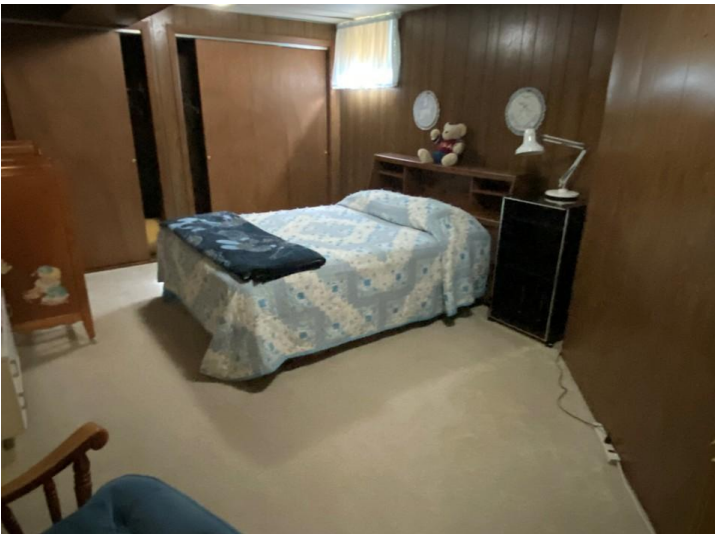
\$254,900
MLS 6799881 Residential
2520 Calihan Avenue
Bemidji MN 56601



website: www.AffinityRealEstate.com | email: info@affinityrealestate.com | office: 218-237-3333 | fax: 218-237-3377



\$254,900
 MLS 6799881 Residential
 2520 Calihan Avenue
 Bemidji MN 56601



website: www.AffinityRealEstate.com | email: info@affinityrealestate.com | office: 218-237-3333 | fax: 218-237-3377



\$254,900
MLS 6799881 Residential
2520 Calihan Avenue
Bemidji MN 56601



website: www.AffinityRealEstate.com | email: info@affinityrealestate.com | office: 218-237-3333 | fax: 218-237-3377



\$254,900
MLS 6799881 Residential
2520 Calihan Avenue
Bemidji MN 56601