



MLS 6799943 Land

\$60,000

5 Acres
Raw Land

TBD County 14
Park Rapids MN 56470

Status: Active

Description:

5 beautiful acres just 5 minutes from Park Rapids. Fully wooded property with convenient blacktop frontage, level and gently rolling topography. Plenty of options as there are numerous building sites for both slab on grade or walkout basement construction. Alternatively, if you are seeking the ideal recreational headquarters this is it! Build the shop, shouse or bring your RV and enjoy a front row seat to everything the Northwoods has to offer. Electricity and fiber optic internet available. Both run alongside the north property boundary on CR 14. A prime choice to retreat or call home.

Additional Details:

Lot Acres	5
Lot Dimensions	330 x 660
School District	309
Taxes	\$200
Taxes with Assessments	\$200
Tax Year	2025

Additional Features:

Driving Directions:

From Park Rapids: Go south on Hwy 71 approximately 4 miles to a right on County 14. Proceed to property just past Black Bear Drive on your left.



Listed By:
Affinity Real Estate Inc.

Affinity Real Estate Inc. participates in the Regional Multiple Listing Service of Minnesota, Inc Broker Reciprocity (sm) program, allowing us to display other broker's listings on our website. All properties are subject to prior sale, change or withdrawal.



Call Affinity Real Estate

218-237-3333

info@affinityrealestate.com



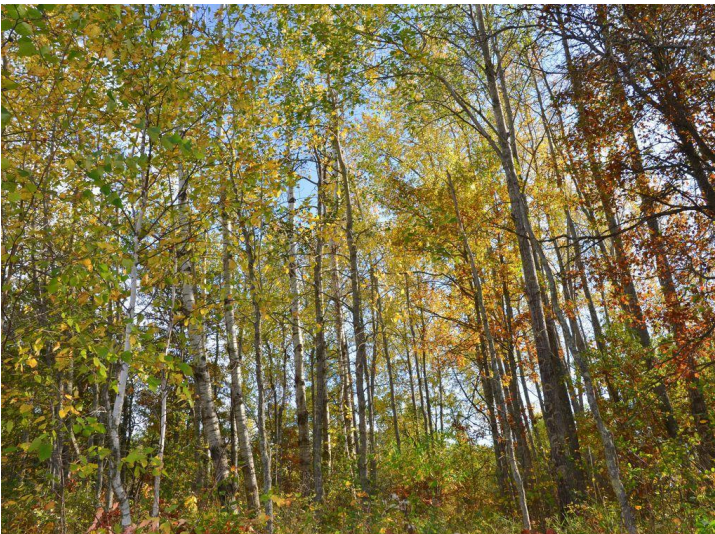
Affinity Real Estate - 600 Park Avenue South - Park Rapids MN 56470



website: www.AffinityRealEstate.com | email: info@affinityrealestate.com | office: 218-237-3333 | fax: 218-237-3377



\$60,000
 MLS 6799943 Land
 TBD County 14
 Park Rapids MN 56470



website: www.AffinityRealEstate.com | email: info@affinityrealestate.com | office: 218-237-3333 | fax: 218-237-3377



\$60,000
MLS 6799943 Land
TBD County 14
Park Rapids MN 56470



website: www.AffinityRealEstate.com | email: info@affinityrealestate.com | office: 218-237-3333 | fax: 218-237-3377



\$60,000
 MLS 6799943 Land
 TBD County 14
 Park Rapids MN 56470