



MLS 6800104 Commercial

\$169,995

TBD Aspen Avenue
Menahga MN 56464

Status: Pending

Description:

Huge pole building on 4.8 acres. Features 2010 construction measuring 40 x 144 for a total of 5,760 square feet. Private and wooded setting located on the south end of Menahga just off State Hwy 71. Currently zoned commercial but utilized in a personal use capacity. Seeking additional income or simply need extra storage? This is an awesome property with so many options.

Additional Details:

Year Built	2010
Lot Acres	4.8
Lot Dimensions	301 x 675 x 300 x 707
Garage Stalls	1
School District	821
Taxes	(unreported)
Taxes with Assessments	(unreported)
Tax Year	2025

Additional Features:

Fuel: Other **Garage:** 1 **Heat:** None **Sewer:** None **Water:** None

Driving Directions:

In Menahga: Go South on Aspen Ave (Hwy 71) to a left at the former Menahga, Marine and Rental. Proceed straight ahead to property on right.



Listed By:
Affinity Real Estate Inc.

Affinity Real Estate Inc. participates in the Regional Multiple Listing Service of Minnesota, Inc Broker Reciprocity (sm) program, allowing us to display other broker's listings on our website. All properties are subject to prior sale, change or withdrawal.



Call Affinity Real Estate

218-237-3333

info@affinityrealestate.com



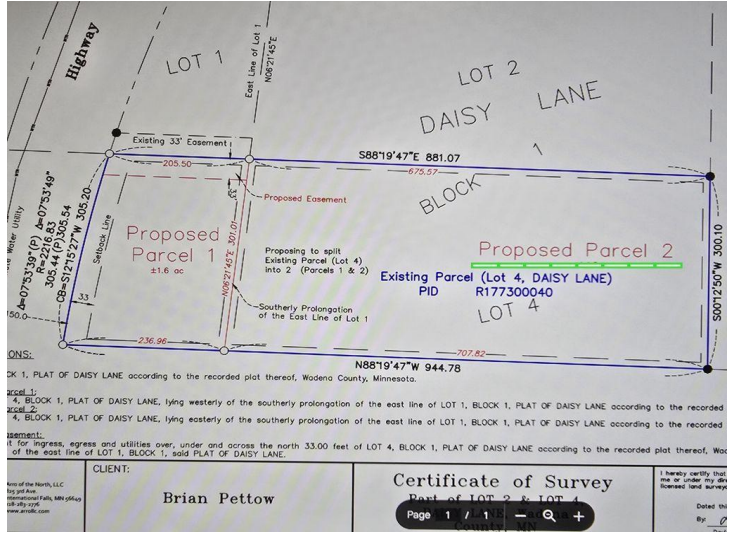
Affinity Real Estate - 600 Park Avenue South - Park Rapids MN 56470



website: www.AffinityRealEstate.com | email: info@affinityrealestate.com | office: 218-237-3333 | fax: 218-237-3377



\$169,995
 MLS 6800104 Commercial
 TBD Aspen Avenue
 Menahga MN 56464



website: www.AffinityRealEstate.com | email: info@affinityrealestate.com | office: 218-237-3333 | fax: 218-237-3377



\$169,995
MLS 6800104 Commercial
TBD Aspen Avenue
Menahga MN 56464