



MLS 6800215 Lake Home

\$499,900

2,285 sq ft
3 bedrooms
3 baths

6967 Shingobee Road
Walker MN 56484

Waterfront: Leech

Status: Coming Soon

Description:

Location, Location—on Sought-After Leech Lake!

Here's your opportunity to own 106 feet of prime frontage just 3 miles from picturesque downtown Walker. This well-built, one-owner Leech Lake home sits on Pumphouse Bay, which connects directly to Walker Bay and Shingobee Bay—a truly ideal location! This 3-bedroom, 2-bath home is filled with character and charm, featuring a beautiful stone wood-burning fireplace, main floor laundry, Anderson windows, a screened porch, and a lakeside patio perfect for relaxing or entertaining.

The lower level offers a spacious family room with a walkout to the lake, built-in storage, and plenty of room for gatherings. The upper level boasts two bedrooms and a $\frac{3}{4}$ bath, creating a comfortable and functional layout. An attached two-car garage includes year-round lakeside living quarters above (657 sq ft.) complete with a full bath, kitchenette, and ample space for guests or potential rental income. Situated on .68 acres, this property provides a peaceful, private setting with beautiful perennial gardens and plenty of flexibility—perfect as a summer getaway, year-round residence, or even a future building site. Enjoy the convenience of being less than a mile from the Paul Bunyan and Heartland State Trails, offering endless opportunities for hiking, biking, and snowmobiling adventures. Don't wait—this one won't last long!

Additional Details:

Year Built	1980
Lot Acres	0.06
Lot Dimensions	106x245x87x286
Garage Stalls	2
School District	113
Taxes	\$2,238
Taxes with Assessments	\$2,304
Tax Year	2025

Additional Features:

Basement: Finished, Storage Space, Walkout **Fuel:** Electric, Wood **Garage:** 2 **Heat:** Baseboard **Sewer:** Private Sewer, Tank with Drainage Field
Water: Submersible - 4 Inch, Private, Well **Air Conditioning:** Central Air, Wall Unit(s)

Driving Directions:

From MN 200 3.4 Miles to right on Shingobee Rd NW 1.5 miles to right at fire #6967 Shingobee RD NW
Kurilla Real Estate LTD



Affinity Real Estate Inc. participates in the Regional Multiple Listing Service of Minnesota, Inc Broker Reciprocity (sm) program, allowing us to display other broker's listings on our website. All properties are subject to prior sale, change or withdrawal.



Call Affinity Real Estate

218-237-3333

info@affinityrealestate.com



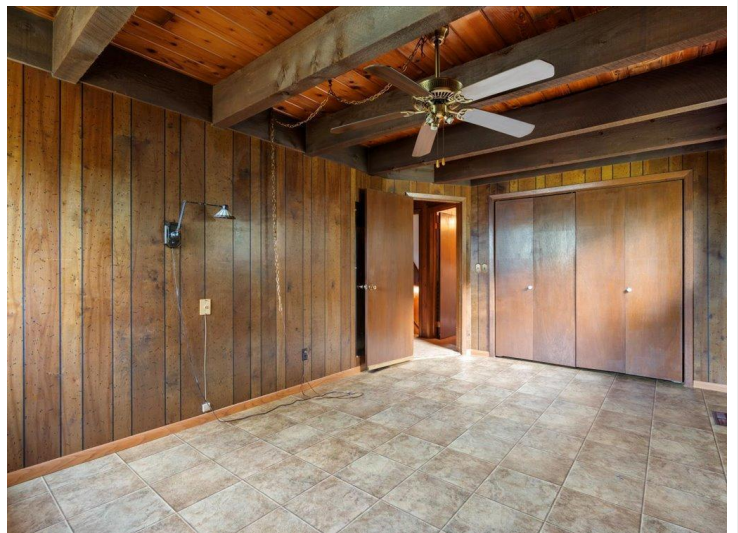
Affinity Real Estate - 600 Park Avenue South - Park Rapids MN 56470



website: www.AffinityRealEstate.com | email: info@affinityrealestate.com | office: 218-237-3333 | fax: 218-237-3377

Affinity
REAL ESTATE INC

\$499,900
MLS 6800215 Lake Home
6967 Shingobee Road
Walker MN 56484



website: www.AffinityRealEstate.com | email: info@affinityrealestate.com | office: 218-237-3333 | fax: 218-237-3377

Affinity
REAL ESTATE INC

\$499,900
MLS 6800215 Lake Home
6967 Shingobee Road
Walker MN 56484



website: www.AffinityRealEstate.com | email: info@affinityrealestate.com | office: 218-237-3333 | fax: 218-237-3377

Affinity
REAL ESTATE INC

\$499,900
MLS 6800215 Lake Home
6967 Shingobee Road
Walker MN 56484



website: www.AffinityRealEstate.com | email: info@affinityrealestate.com | office: 218-237-3333 | fax: 218-237-3377

Affinity
REAL ESTATE INC

\$499,900
MLS 6800215 Lake Home
6967 Shingobee Road
Walker MN 56484



website: www.AffinityRealEstate.com | email: info@affinityrealestate.com | office: 218-237-3333 | fax: 218-237-3377

Affinity
REAL ESTATE INC

\$499,900
MLS 6800215 Lake Home
6967 Shingobee Road
Walker MN 56484



website: www.AffinityRealEstate.com | email: info@affinityrealestate.com | office: 218-237-3333 | fax: 218-237-3377



\$499,900
 MLS 6800215 Lake Home
 6967 Shingobee Road
 Walker MN 56484