



MLS 6800222 Lake Home

\$700,000

2,000 sq ft
3 bedrooms
2 baths

36803 Pine Knolls Circle
Pine River MN 56474

Waterfront: Whitefish Lake
(18031000)

Status: Coming Soon

Description:

Enjoy your chance to get onto the WFC with 106 feet of frontage on Upper Whitefish. This 3 bed, 2 bath home offers incredible opportunity for buyers looking to build equity and make a property their own or build fresh on a beautifully pine studded lot at the convergence of the Pine River and Upper Whitefish. With some finishing touches, this large & "good bones" cabin could truly shine. The huge unfinished basement provides excellent potential for additional living space, with room for at least 2 more bedrooms, 2 bathrooms, a rec area + an office with views to the lake. We've run the numbers, and with around \$300-350K more into it, you could be looking at around a 5bed, 4 bath, 3500+ sq ft cabin or home on the WFC. Ask for details. Outside, you'll find a whole home generator, a 30x40 pole barn, perfect for storing all your lake toys and equipment. A rare opportunity to invest in a prime location at an attractive price point on one of the area's most sought-after chains. COMING SOON!

Additional Details:

Year Built	2002
Lot Acres	0.69
Lot Dimensions	352x79x302x150
School District	186
Taxes	\$3,112
Taxes with Assessments	\$3,112
Tax Year	2024

Additional Features:

Fuel: Natural Gas **Heat:** Forced Air

Driving Directions:

Turn right onto County Highway 15, continue for 3.7 miles, then turn right onto Driftwood Lane, left onto Pine Knolls Circle, stay right on Pine Knolls Circle, and finish with a left onto Birch Drive to reach 36803 Pine Knolls Circle in Pine River.



Listed By:
Real Broker, LLC

Affinity Real Estate Inc. participates in the Regional Multiple Listing Service of Minnesota, Inc Broker Reciprocity (sm) program, allowing us to display other broker's listings on our website. All properties are subject to prior sale, change or withdrawal.



Call Affinity Real Estate

218-237-3333

info@affinityrealestate.com



Affinity Real Estate - 600 Park Avenue South - Park Rapids MN 56470



website: www.AffinityRealEstate.com | email: info@affinityrealestate.com | office: 218-237-3333 | fax:218-237-3377

Affinity
REAL ESTATE INC

\$700,000
MLS 6800222 Lake Home
36803 Pine Knolls Circle
Pine River MN 56474



website: www.AffinityRealEstate.com | email: info@affinityrealestate.com | office: 218-237-3333 | fax:218-237-3377



\$700,000
MLS 6800222 Lake Home
36803 Pine Knolls Circle
Pine River MN 56474



website: www.AffinityRealEstate.com | email: info@affinityrealestate.com | office: 218-237-3333 | fax: 218-237-3377

Affinity
REAL ESTATE INC

\$700,000
MLS 6800222 Lake Home
36803 Pine Knolls Circle
Pine River MN 56474



website: www.AffinityRealEstate.com | email: info@affinityrealestate.com | office: 218-237-3333 | fax:218-237-3377



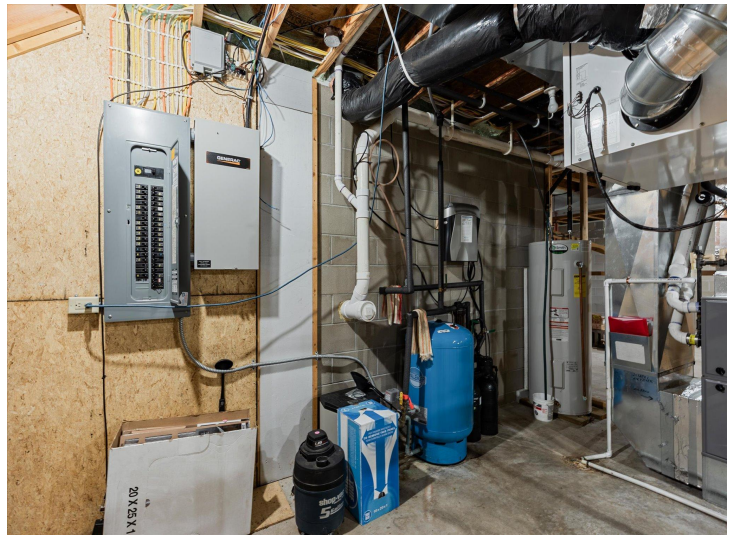
\$700,000
MLS 6800222 Lake Home
36803 Pine Knolls Circle
Pine River MN 56474



website: www.AffinityRealEstate.com | email: info@affinityrealestate.com | office: 218-237-3333 | fax:218-237-3377

Affinity
REAL ESTATE INC

\$700,000
MLS 6800222 Lake Home
36803 Pine Knolls Circle
Pine River MN 56474



website: www.AffinityRealEstate.com | email: info@affinityrealestate.com | office: 218-237-3333 | fax:218-237-3377



\$700,000
MLS 6800222 Lake Home
36803 Pine Knolls Circle
Pine River MN 56474



website: www.AffinityRealEstate.com | email: info@affinityrealestate.com | office: 218-237-3333 | fax:218-237-3377



\$700,000
MLS 6800222 Lake Home
36803 Pine Knolls Circle
Pine River MN 56474



website: www.AffinityRealEstate.com | email: info@affinityrealestate.com | office: 218-237-3333 | fax:218-237-3377



\$700,000
MLS 6800222 Lake Home
36803 Pine Knolls Circle
Pine River MN 56474