



MLS 6800427 Residential

**\$268,000**

1,124 sq ft  
2 bedrooms  
1 baths

4242 Tall Timber Lane  
Bemidji MN 56601

Status: Active

**Description:**

Charming 2-Bedroom Home on 3+ Acres of Peaceful Woodland

Welcome to your private retreat! This beautiful 2-bedroom, 1-bath home sits on over 3 acres of serene, wooded land—offering the perfect balance of comfort and seclusion. The inviting open-concept layout features bright, natural light throughout, with a spacious living area and a modern kitchen that opens onto a lovely back deck—perfect for entertaining or relaxing in nature.

Step outside to enjoy the large yard surrounded by mature trees, a cozy firepit area for evening gatherings, and plenty of open space for gardening, recreation, or simply soaking in the peace and quiet. The detached 2-stall garage provides ample storage for vehicles, tools, or outdoor toys.

Located just minutes from local amenities yet surrounded by nature, this property offers the ideal setting for year-round living

**Additional Details:**

Year Built	2019
Lot Acres	3.43
Lot Dimensions	187x399x187x398
Garage Stalls	2
School District	31
Taxes	\$2,304
Taxes with Assessments	\$2,304
Tax Year	2025

**Additional Features:**

**Fuel:** Propane **Heat:** Forced Air

**Driving Directions:**

From Bemidji High School, west on Division St, to just past Gene Dill. Turn right at Country View Dr, then left on Tall Timber Lane. The home will be on the left.



Affinity Real Estate Inc. participates in the Regional Multiple Listing Service of Minnesota, Inc Broker Reciprocity (sm) program, allowing us to display other broker's listings on our website. All properties are subject to prior sale, change or withdrawal.



Call Affinity Real Estate

**218-237-3333**

[info@affinityrealestate.com](mailto:info@affinityrealestate.com)



Affinity Real Estate - 600 Park Avenue South - Park Rapids MN 56470





website: [www.AffinityRealEstate.com](http://www.AffinityRealEstate.com) | email: [info@affinityrealestate.com](mailto:info@affinityrealestate.com) | office: 218-237-3333 | fax: 218-237-3377

**Affinity**  
REAL ESTATE INC

**\$268,000**  
MLS 6800427 Residential  
4242 Tall Timber Lane  
Bemidji MN 56601





website: [www.AffinityRealEstate.com](http://www.AffinityRealEstate.com) | email: [info@affinityrealestate.com](mailto:info@affinityrealestate.com) | office: 218-237-3333 | fax: 218-237-3377

**Affinity**  
REAL ESTATE INC

**\$268,000**

MLS 6800427 Residential  
4242 Tall Timber Lane  
Bemidji MN 56601





website: [www.AffinityRealEstate.com](http://www.AffinityRealEstate.com) | email: [info@affinityrealestate.com](mailto:info@affinityrealestate.com) | office: 218-237-3333 | fax: 218-237-3377

**Affinity**  
REAL ESTATE INC

**\$268,000**  
MLS 6800427 Residential  
4242 Tall Timber Lane  
Bemidji MN 56601





website: [www.AffinityRealEstate.com](http://www.AffinityRealEstate.com) | email: [info@affinityrealestate.com](mailto:info@affinityrealestate.com) | office: 218-237-3333 | fax: 218-237-3377

**Affinity**  
REAL ESTATE INC

**\$268,000**  
MLS 6800427 Residential  
4242 Tall Timber Lane  
Bemidji MN 56601



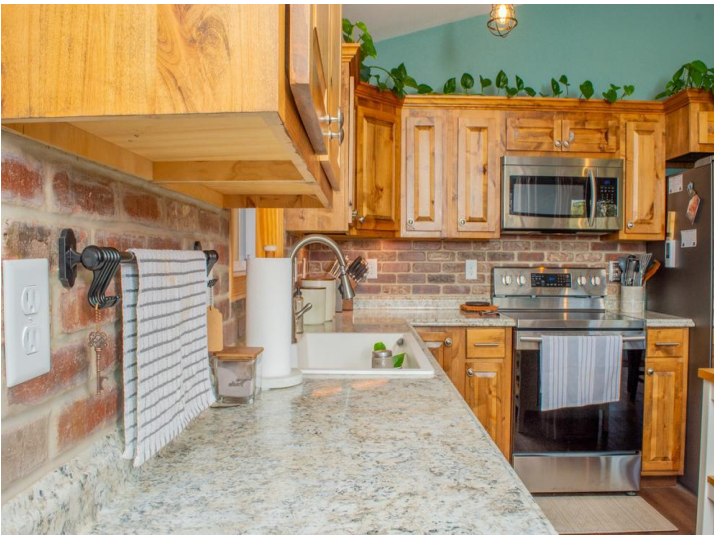


website: [www.AffinityRealEstate.com](http://www.AffinityRealEstate.com) | email: [info@affinityrealestate.com](mailto:info@affinityrealestate.com) | office: 218-237-3333 | fax: 218-237-3377

**Affinity**  
REAL ESTATE INC

**\$268,000**  
MLS 6800427 Residential  
4242 Tall Timber Lane  
Bemidji MN 56601





website: [www.AffinityRealEstate.com](http://www.AffinityRealEstate.com) | email: [info@affinityrealestate.com](mailto:info@affinityrealestate.com) | office: 218-237-3333 | fax: 218-237-3377

**Affinity**  
REAL ESTATE INC

**\$268,000**  
MLS 6800427 Residential  
4242 Tall Timber Lane  
Bemidji MN 56601