



MLS 6800863 Residential

**\$479,900**

2,253 sq ft  
3 bedrooms  
2 baths

24576 Wild Wings Way  
Nisswa MN 56468

Status: Active

#### Description:

Discover your serene escape in the heart of nature with this awesome 3-bedroom, 2-bath home nestled on a sprawling 4-acre lot in Nisswa, MN. This beautiful property blends rustic elegance with modern comforts, featuring exquisite natural woodwork throughout that enhances its cozy and inviting ambiance.

The expansive front and rear decks offer panoramic views of the lush surroundings, perfect for sipping morning coffee or hosting evening gatherings under the stars, or choose to enjoy the evenings by the fire pit as you share stories and create lasting memories with loved ones.

A unique highlight is the picturesque creek that meanders through the property, adding tranquility and a touch of wilderness to your daily life. For those who cherish outdoor adventures, you'll appreciate close access to the renowned Paul Bunyan bike trail, world-class golfing, fishing, plus just a short distance from downtown Nisswa's great shopping, dining and many events!

Convenience meets exceptional storage solutions with an oversized 5-car garage, offering ample room for vehicles, toys, and hobbies alike. Embrace Minnesota's stunning seasons in this idyllic haven, where every day feels like a retreat into nature's embrace. Whether you're seeking a peaceful sanctuary or an adventurous lifestyle hub, this home promises both relaxation and endless exploration opportunities. This is a must-see!

#### Additional Details:

Year Built	2001
Lot Acres	4.39
Lot Dimensions	583x754x875xIRR
Garage Stalls	5
School District	181
Taxes	\$2,957
Taxes with Assessments	\$2,982
Tax Year	2025

#### Additional Features:

**Fuel:** Natural Gas **Heat:** Forced Air

#### Driving Directions:

From the intersection of Highway 101 and Highway 102 in Nisswa, go North on Highway 102 to right (East) on Clark Lake Road to right on Wild Wings Way to left and #24576 on the left.

Affinity Real Estate Inc. participates in the Regional Multiple Listing Service of Minnesota, Inc Broker Reciprocity (sm) program, allowing us to display other broker's listings on our website. All properties are subject to prior sale, change or withdrawal.



**Call Affinity Real Estate**

**218-237-3333**

**info@affinityrealestate.com**



**Affinity Real Estate - 600 Park Avenue South - Park Rapids MN 56470**





website: [www.AffinityRealEstate.com](http://www.AffinityRealEstate.com) | email: [info@affinityrealestate.com](mailto:info@affinityrealestate.com) | office: 218-237-3333 | fax: 218-237-3377



**\$479,900**  
 MLS 6800863 Residential  
 24576 Wild Wings Way  
 Nisswa MN 56468





website: [www.AffinityRealEstate.com](http://www.AffinityRealEstate.com) | email: [info@affinityrealestate.com](mailto:info@affinityrealestate.com) | office: 218-237-3333 | fax: 218-237-3377

**Affinity**  
REAL ESTATE INC

**\$479,900**  
MLS 6800863 Residential  
24576 Wild Wings Way  
Nisswa MN 56468





website: [www.AffinityRealEstate.com](http://www.AffinityRealEstate.com) | email: [info@affinityrealestate.com](mailto:info@affinityrealestate.com) | office: 218-237-3333 | fax: 218-237-3377

**Affinity**  
REAL ESTATE INC

**\$479,900**  
MLS 6800863 Residential  
24576 Wild Wings Way  
Nisswa MN 56468



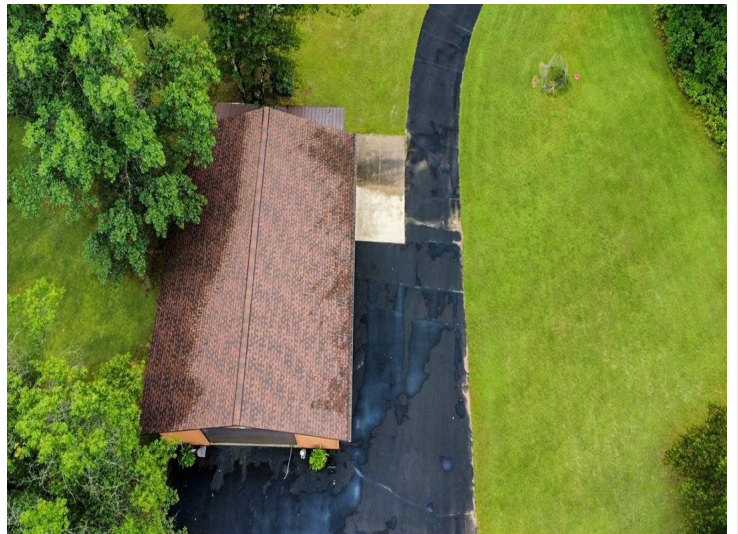


website: [www.AffinityRealEstate.com](http://www.AffinityRealEstate.com) | email: [info@affinityrealestate.com](mailto:info@affinityrealestate.com) | office: 218-237-3333 | fax: 218-237-3377



**\$479,900**  
MLS 6800863 Residential  
24576 Wild Wings Way  
Nisswa MN 56468



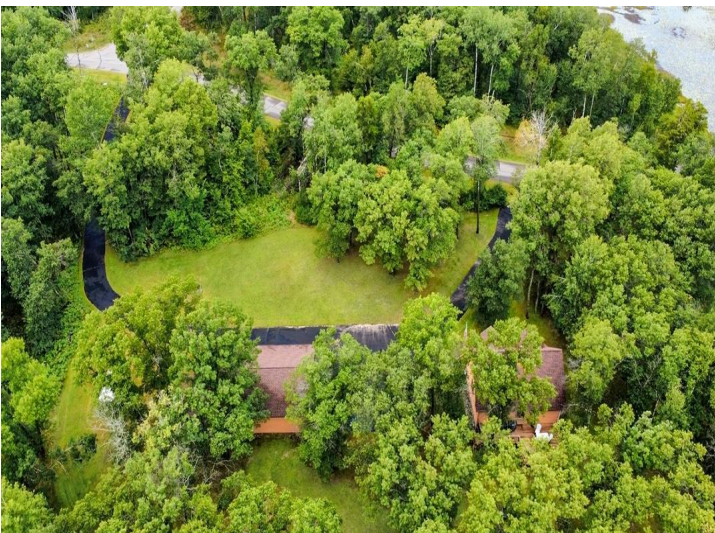


website: [www.AffinityRealEstate.com](http://www.AffinityRealEstate.com) | email: [info@affinityrealestate.com](mailto:info@affinityrealestate.com) | office: 218-237-3333 | fax: 218-237-3377

**Affinity**  
REAL ESTATE INC

**\$479,900**  
MLS 6800863 Residential  
24576 Wild Wings Way  
Nisswa MN 56468





website: [www.AffinityRealEstate.com](http://www.AffinityRealEstate.com) | email: [info@affinityrealestate.com](mailto:info@affinityrealestate.com) | office: 218-237-3333 | fax: 218-237-3377



**\$479,900**  
 MLS 6800863 Residential  
 24576 Wild Wings Way  
 Nisswa MN 56468





website: [www.AffinityRealEstate.com](http://www.AffinityRealEstate.com) | email: [info@affinityrealestate.com](mailto:info@affinityrealestate.com) | office: 218-237-3333 | fax: 218-237-3377



**\$479,900**  
 MLS 6800863 Residential  
 24576 Wild Wings Way  
 Nisswa MN 56468





website: [www.AffinityRealEstate.com](http://www.AffinityRealEstate.com) | email: [info@affinityrealestate.com](mailto:info@affinityrealestate.com) | office: 218-237-3333 | fax: 218-237-3377



**\$479,900**  
MLS 6800863 Residential  
24576 Wild Wings Way  
Nisswa MN 56468