



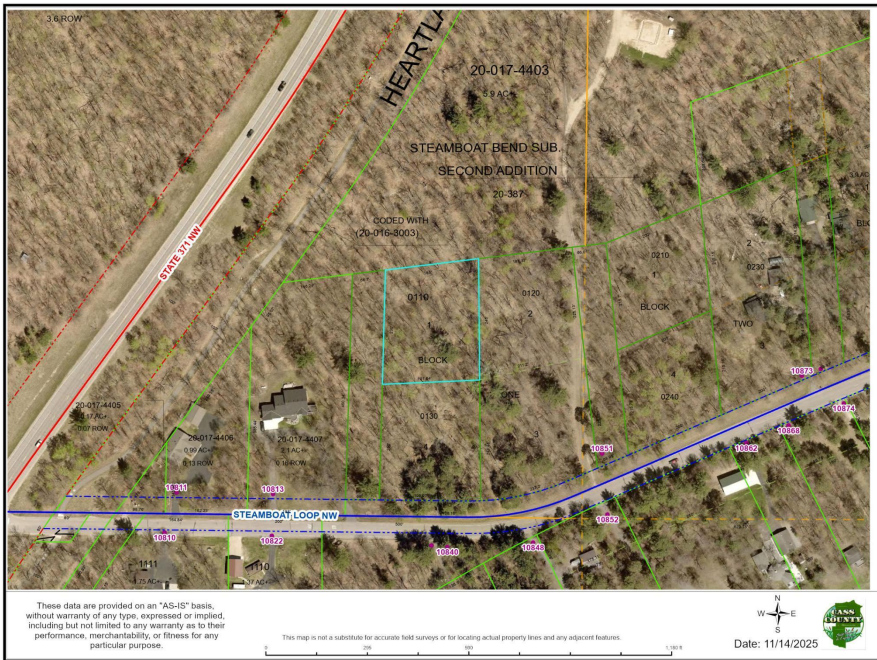
MLS 6800955 Land

**\$34,900**

1.25 Acres  
Plat Designed

TBD\* Steamboat Loop  
Walker MN 56484

Status: Pending



#### Description:

Level, wooded 1.25 acre lot with access to hard top road. Lot is across the road from Leech Lake, next to the Heartland Trail & just 3 miles from Longbow 18 hole public golf course. Bring your building plans!! Additional attached 1.25 acres of land available.

#### Additional Details:

|                        |                 |
|------------------------|-----------------|
| Lot Acres              | 1.25            |
| Lot Dimensions         | 191x230x185x245 |
| School District        | 693             |
| Taxes                  | \$48            |
| Taxes with Assessments | \$46            |
| Tax Year               | 2025            |

#### Additional Features:

#### Driving Directions:

From Walker, go 8 miles north on Hwy 371 to N Steamboat Loop NW (R). Sign on lot.



Listed By:  
Bill Hansen Realty/Walker

Affinity Real Estate Inc. participates in the Regional Multiple Listing Service of Minnesota, Inc Broker Reciprocity (sm) program, allowing us to display other broker's listings on our website. All properties are subject to prior sale, change or withdrawal.



Call Affinity Real Estate

**218-237-3333**

[info@affinityrealestate.com](mailto:info@affinityrealestate.com)



Affinity Real Estate - 600 Park Avenue South - Park Rapids MN 56470





website: [www.AffinityRealEstate.com](http://www.AffinityRealEstate.com) | email: [info@affinityrealestate.com](mailto:info@affinityrealestate.com) | office: 218-237-3333 | fax: 218-237-3377



**\$34,900**  
 MLS 6800955 Land  
 TBD\* Steamboat Loop  
 Walker MN 56484