



MLS 6801078 Residential

\$349,900

3,264 sq ft
5 bedrooms
3 baths

21824 County Highway 20
Detroit Lakes MN 56501

Status: Active

Description:

Tucked into the trees between the Pelican and Cormorant lakes area, you'll find this 5 bedroom 3 bathroom house and over 6 acres!!! Do not miss this opportunity! 2 stall attached garage plus detached additional stall. With two decks, a fenced in area, a large garden space, trees and wildlife, this beautiful property is set up for you to enjoy both indoors and out! Great location for access to Pelican Rapids, Detroit Lakes and Vergas. Inside the house, you'll find 3 living/family rooms, one on each floor, amazing storage and beautiful views in every direction! Recent updates include refinished hardwood floors, new kitchen flooring, new deck and other updates.

Additional Details:

Year Built	1917
Lot Acres	6.13
Lot Dimensions	IRR
Garage Stalls	3
School District	548
Taxes	\$1,400
Taxes with Assessments	\$1,460
Tax Year	2024

Additional Features:

Basement: Partially Finished **Fuel:** Propane **Garage:** 3 **Heat:** Forced Air **Sewer:** Private Sewer **Water:** Well **Air Conditioning:** Window Unit(s)

Driving Directions:

From hwy 59, go W on Co Rd 20.



Listed By:
Re/Max Lakes Region

Affinity Real Estate Inc. participates in the Regional Multiple Listing Service of Minnesota, Inc Broker Reciprocity (sm) program, allowing us to display other broker's listings on our website. All properties are subject to prior sale, change or withdrawal.



Call Affinity Real Estate

218-237-3333

info@affinityrealestate.com



Affinity Real Estate - 600 Park Avenue South - Park Rapids MN 56470



website: www.AffinityRealEstate.com | email: info@affinityrealestate.com | office: 218-237-3333 | fax: 218-237-3377



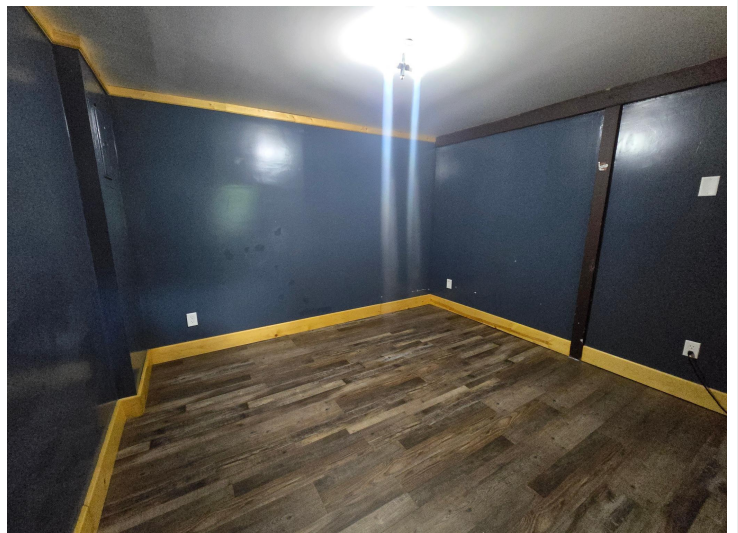
\$349,900
MLS 6801078 Residential
21824 County Highway 20
Detroit Lakes MN 56501



website: www.AffinityRealEstate.com | email: info@affinityrealestate.com | office: 218-237-3333 | fax: 218-237-3377

Affinity
REAL ESTATE INC

\$349,900
MLS 6801078 Residential
21824 County Highway 20
Detroit Lakes MN 56501



website: www.AffinityRealEstate.com | email: info@affinityrealestate.com | office: 218-237-3333 | fax: 218-237-3377



\$349,900
 MLS 6801078 Residential
 21824 County Highway 20
 Detroit Lakes MN 56501



website: www.AffinityRealEstate.com | email: info@affinityrealestate.com | office: 218-237-3333 | fax: 218-237-3377

Affinity
REAL ESTATE INC

\$349,900
MLS 6801078 Residential
21824 County Highway 20
Detroit Lakes MN 56501



website: www.AffinityRealEstate.com | email: info@affinityrealestate.com | office: 218-237-3333 | fax: 218-237-3377



\$349,900

MLS 6801078 Residential
21824 County Highway 20
Detroit Lakes MN 56501