



MLS 6801279 Residential

\$319,900

1,785 sq ft
3 bedrooms
2 baths

1303 Summit Avenue
Detroit Lakes MN 56501

Status: Active

Description:

This well maintained 3 bedroom 2 bath home sits in the heart of Detroit Lakes. Home is adjacent to Peoples Park which boasts Pickle ball courts, green space, outdoor skating rinks and is within eye sight of Detroit Lakes famous City beach on Detroit Lake which provides lake access and trails with numerous dining establishments in the area. Lower level bath was updated in 2024, upper level bath updated in 2016. New boiler, water heater and water softener in 2021. New mini-splits installed in 2019. New fridge and dishwasher in 2020. The kitchen cabinets could use a fresh look but everything else in the house has been updated and in good shape. Maintenance free siding and windows. Gutter guards keep the gutters clean and flowing.

Additional Details:

Year Built	1972
Lot Acres	0.14
Lot Dimensions	50x125
Garage Stalls	1
School District	22
Taxes	\$3,106
Taxes with Assessments	\$3,186
Tax Year	2025

Additional Features:

Fuel: Natural Gas **Heat:** Boiler, Ductless Mini-Split, Fireplace(s)

Driving Directions:

From DL, take Washington Ave South to Willow St, turn right and follow Willow to Summit Ave, turn left and follow to the property. 1/2 block from Detroit Lake.



Listed By:
Counselor Realty Detroit Lakes

Affinity Real Estate Inc. participates in the Regional Multiple Listing Service of Minnesota, Inc Broker Reciprocity (sm) program, allowing us to display other broker's listings on our website. All properties are subject to prior sale, change or withdrawal.



Call Affinity Real Estate

218-237-3333

info@affinityrealestate.com



Affinity Real Estate - 600 Park Avenue South - Park Rapids MN 56470



website: www.AffinityRealEstate.com | email: info@affinityrealestate.com | office: 218-237-3333 | fax: 218-237-3377

Affinity
REAL ESTATE INC

\$319,900
MLS 6801279 Residential
1303 Summit Avenue
Detroit Lakes MN 56501



website: www.AffinityRealEstate.com | email: info@affinityrealestate.com | office: 218-237-3333 | fax: 218-237-3377

Affinity
REAL ESTATE INC

\$319,900
MLS 6801279 Residential
1303 Summit Avenue
Detroit Lakes MN 56501



website: www.AffinityRealEstate.com | email: info@affinityrealestate.com | office: 218-237-3333 | fax: 218-237-3377

Affinity
REAL ESTATE INC

\$319,900
MLS 6801279 Residential
1303 Summit Avenue
Detroit Lakes MN 56501



website: www.AffinityRealEstate.com | email: info@affinityrealestate.com | office: 218-237-3333 | fax: 218-237-3377

Affinity
REAL ESTATE INC

\$319,900
MLS 6801279 Residential
1303 Summit Avenue
Detroit Lakes MN 56501



website: www.AffinityRealEstate.com | email: info@affinityrealestate.com | office: 218-237-3333 | fax: 218-237-3377

Affinity
REAL ESTATE INC

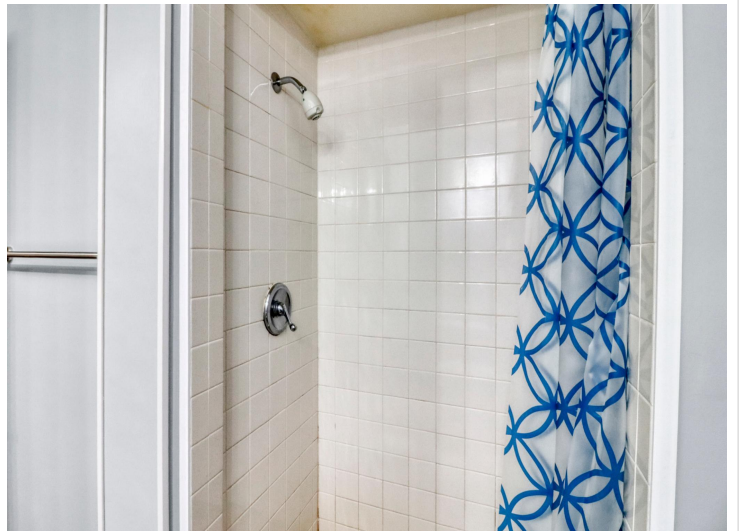
\$319,900
MLS 6801279 Residential
1303 Summit Avenue
Detroit Lakes MN 56501



website: www.AffinityRealEstate.com | email: info@affinityrealestate.com | office: 218-237-3333 | fax: 218-237-3377



\$319,900
 MLS 6801279 Residential
 1303 Summit Avenue
 Detroit Lakes MN 56501



website: www.AffinityRealEstate.com | email: info@affinityrealestate.com | office: 218-237-3333 | fax: 218-237-3377

Affinity
REAL ESTATE INC

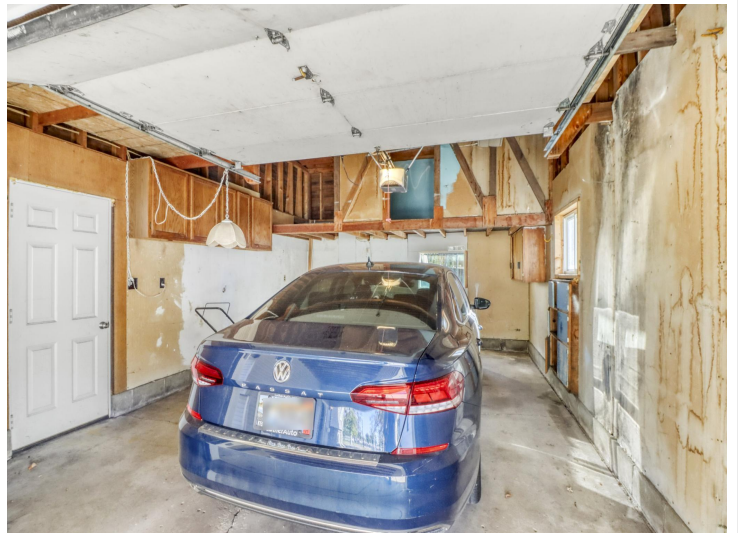
\$319,900
MLS 6801279 Residential
1303 Summit Avenue
Detroit Lakes MN 56501



website: www.AffinityRealEstate.com | email: info@affinityrealestate.com | office: 218-237-3333 | fax: 218-237-3377



\$319,900
 MLS 6801279 Residential
 1303 Summit Avenue
 Detroit Lakes MN 56501



website: www.AffinityRealEstate.com | email: info@affinityrealestate.com | office: 218-237-3333 | fax: 218-237-3377



\$319,900
 MLS 6801279 Residential
 1303 Summit Avenue
 Detroit Lakes MN 56501



website: www.AffinityRealEstate.com | email: info@affinityrealestate.com | office: 218-237-3333 | fax: 218-237-3377



\$319,900
MLS 6801279 Residential
1303 Summit Avenue
Detroit Lakes MN 56501