



MLS 6801345 Residential

\$479,900

3,500 sq ft
4 bedrooms
3 baths

17256 Trengove Road
Solway MN 56678

Status: Active

Description:

Welcome to this 4-bedroom, 3-bath beautiful home on 24 plus acres! Enjoy immediate privacy when entering the driveway to the home. Extensively updated and meticulously maintained, this home offers peace of mind with major mechanical, structural, and aesthetic upgrades: New furnace, central A/C, and ductwork. New flooring, drywall/paint updates, tankless on-demand water heater, insulated/heated main garage, new roof on home and garage, smart lighting/switches, propane fireplace, updated primary bath (tub, vanity, flooring), cement patio, hot tub, and full exterior staining/caulking. Homeowners added a 4th bedroom, custom movie room, lawn irrigation system, clear span storage shed, wildlife food plot with Amish-built deer stand. Home was recently re-stained. Enjoy the spacious kitchen and pantry. The formal dining room leads to patio and a hot tub! This home combines modern amenities with thoughtful outdoor enhancements—perfect for year-round living, entertaining, and recreation. Come see in person all this amazing property has to offer. Country living, a connection to nature you deserve!

Additional Details:

Year Built	2000
Lot Acres	24.48
Lot Dimensions	989x1243x6668x655x312x589
Garage Stalls	4
School District	31
Taxes	\$3,356
Taxes with Assessments	\$3,356
Tax Year	2025

Additional Features:

Basement: None **Fuel:** Electric, Propane **Garage:** 4 **Heat:** Forced Air, Fireplace(s), Hot Water **Sewer:** Private Sewer **Water:** Private **Air Conditioning:** Central Air

Driving Directions:

From Solway: south on Centerline Road approximately 2.3 miles to Trengove Rd. Left on Trengove Rd to 17256. The driveway will be on your right.



Listed By:
Better Homes and Gardens Real Estate First Choice

Affinity Real Estate Inc. participates in the Regional Multiple Listing Service of Minnesota, Inc Broker Reciprocity (sm) program, allowing us to display other broker's listings on our website. All properties are subject to prior sale, change or withdrawal.



Call Affinity Real Estate

218-237-3333

info@affinityrealestate.com



Affinity Real Estate - 600 Park Avenue South - Park Rapids MN 56470



website: www.AffinityRealEstate.com | email: info@affinityrealestate.com | office: 218-237-3333 | fax: 218-237-3377

Affinity
REAL ESTATE INC

\$479,900
MLS 6801345 Residential
17256 Trengove Road
Solway MN 56678



website: www.AffinityRealEstate.com | email: info@affinityrealestate.com | office: 218-237-3333 | fax: 218-237-3377

Affinity
REAL ESTATE INC

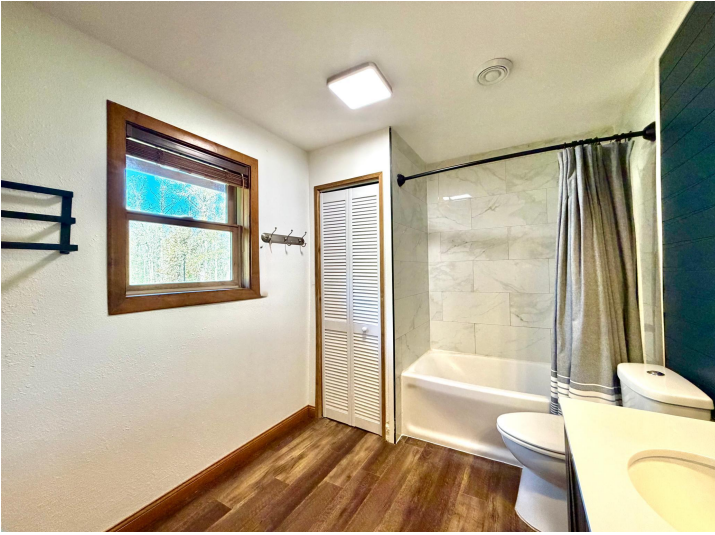
\$479,900
MLS 6801345 Residential
17256 Trengove Road
Solway MN 56678



website: www.AffinityRealEstate.com | email: info@affinityrealestate.com | office: 218-237-3333 | fax: 218-237-3377

Affinity
REAL ESTATE INC

\$479,900
MLS 6801345 Residential
17256 Trengove Road
Solway MN 56678



website: www.AffinityRealEstate.com | email: info@affinityrealestate.com | office: 218-237-3333 | fax: 218-237-3377

Affinity
REAL ESTATE INC

\$479,900
MLS 6801345 Residential
17256 Trengove Road
Solway MN 56678



website: www.AffinityRealEstate.com | email: info@affinityrealestate.com | office: 218-237-3333 | fax: 218-237-3377

Affinity
REAL ESTATE INC

\$479,900
MLS 6801345 Residential
17256 Trengove Road
Solway MN 56678



website: www.AffinityRealEstate.com | email: info@affinityrealestate.com | office: 218-237-3333 | fax: 218-237-3377

Affinity
REAL ESTATE INC

\$479,900
MLS 6801345 Residential
17256 Trengove Road
Solway MN 56678



website: www.AffinityRealEstate.com | email: info@affinityrealestate.com | office: 218-237-3333 | fax: 218-237-3377

Affinity
REAL ESTATE INC

\$479,900
MLS 6801345 Residential
17256 Trengove Road
Solway MN 56678



website: www.AffinityRealEstate.com | email: info@affinityrealestate.com | office: 218-237-3333 | fax: 218-237-3377

Affinity
REAL ESTATE INC

\$479,900
MLS 6801345 Residential
17256 Trengove Road
Solway MN 56678



website: www.AffinityRealEstate.com | email: info@affinityrealestate.com | office: 218-237-3333 | fax: 218-237-3377



\$479,900
 MLS 6801345 Residential
 17256 Trengove Road
 Solway MN 56678



Page 11 of 13



website: www.AffinityRealEstate.com | email: info@affinityrealestate.com | office: 218-237-3333 | fax: 218-237-3377



\$479,900
MLS 6801345 Residential
17256 Trengove Road
Solway MN 56678

website: www.AffinityRealEstate.com | email: info@affinityrealestate.com | office: 218-237-3333 | fax:218-237-3377



\$479,900
MLS 6801345 Residential
17256 Trengove Road
Solway MN 56678