



MLS 6801373 Lake Home

\$419,900

1,684 sq ft
3 bedrooms
2 baths

43795 State Highway 6
Emily MN 56447

Waterfront: Little Emily

Status: Active

Description:

Whether you're searching for a year-round residence or the perfect Up North retreat, this property offers it all. Situated in the Crosby-Ironton School District, you'll enjoy a prime location near Outing and Emily, where charming shops, restaurants, and recreational opportunities await. Outdoor enthusiasts will love nearby snowmobile and ATV trails, as well as Little Emily State Park—featuring a sandy beach, trails, and park. Nestled on 10 acres with a lake view and abundant wildlife, this home is designed to impress. The spacious living room showcases breathtaking views of Little Emily Lake through stunning A-frame windows, paired with vaulted ceilings that create an airy, inviting atmosphere. The main floor includes a convenient primary bedroom with walk-thru bathroom and separate laundry, while the upper level offers two additional bedrooms, a full bathroom, and a versatile loft area. A large mudroom keeps everything tidy. Outside, you'll find everything you need for both relaxation and recreation: a detached oversized 26x32 two-stall garage, plus a massive 40x60 pole shed with concrete flooring and partial insulation—perfect for storing all your vehicles and toys.

Additional Details:

| | |
|------------------------|-------------------|
| Year Built | 2001 |
| Lot Acres | 10.02 |
| Lot Dimensions | 330x1315x331x1315 |
| Garage Stalls | 2 |
| School District | 182 |
| Taxes | \$2,773 |
| Taxes with Assessments | \$2,798 |
| Tax Year | 2025 |

Additional Features:

Basement: None **Fuel:** Electric **Garage:** 2 **Heat:** Radiant Floor **Sewer:** Private Sewer **Water:** Private **Air Conditioning:** None

Driving Directions:

North of Emily on State Highway 6 - Home is on Left -

 Listed By:
Central MN Realty LLC

Affinity Real Estate Inc. participates in the Regional Multiple Listing Service of Minnesota, Inc Broker Reciprocity (sm) program, allowing us to display other broker's listings on our website. All properties are subject to prior sale, change or withdrawal.



Call Affinity Real Estate

218-237-3333

info@affinityrealestate.com



Affinity Real Estate - 600 Park Avenue South - Park Rapids MN 56470



website: www.AffinityRealEstate.com | email: info@affinityrealestate.com | office: 218-237-3333 | fax: 218-237-3377

Affinity
REAL ESTATE INC

\$419,900
MLS 6801373 Lake Home
43795 State Highway 6
Emily MN 56447



website: www.AffinityRealEstate.com | email: info@affinityrealestate.com | office: 218-237-3333 | fax:218-237-3377

Affinity
REAL ESTATE INC

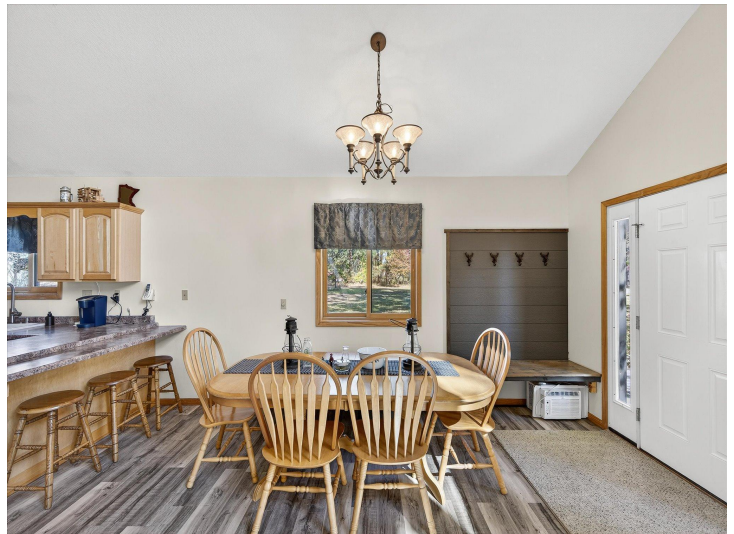
\$419,900
MLS 6801373 Lake Home
43795 State Highway 6
Emily MN 56447



website: www.AffinityRealEstate.com | email: info@affinityrealestate.com | office: 218-237-3333 | fax:218-237-3377



\$419,900
MLS 6801373 Lake Home
43795 State Highway 6
Emily MN 56447



website: www.AffinityRealEstate.com | email: info@affinityrealestate.com | office: 218-237-3333 | fax: 218-237-3377

Affinity
REAL ESTATE INC

\$419,900
MLS 6801373 Lake Home
43795 State Highway 6
Emily MN 56447



website: www.AffinityRealEstate.com | email: info@affinityrealestate.com | office: 218-237-3333 | fax: 218-237-3377

Affinity
REAL ESTATE INC

\$419,900
MLS 6801373 Lake Home
43795 State Highway 6
Emily MN 56447



website: www.AffinityRealEstate.com | email: info@affinityrealestate.com | office: 218-237-3333 | fax:218-237-3377

Affinity
REAL ESTATE INC

\$419,900
MLS 6801373 Lake Home
43795 State Highway 6
Emily MN 56447



website: www.AffinityRealEstate.com | email: info@affinityrealestate.com | office: 218-237-3333 | fax: 218-237-3377

Affinity
REAL ESTATE INC

\$419,900
MLS 6801373 Lake Home
43795 State Highway 6
Emily MN 56447



website: www.AffinityRealEstate.com | email: info@affinityrealestate.com | office: 218-237-3333 | fax:218-237-3377

Affinity
REAL ESTATE INC

\$419,900
MLS 6801373 Lake Home
43795 State Highway 6
Emily MN 56447



website: www.AffinityRealEstate.com | email: info@affinityrealestate.com | office: 218-237-3333 | fax:218-237-3377



\$419,900
MLS 6801373 Lake Home
43795 State Highway 6
Emily MN 56447