



MLS 6801446 Lake Home

**\$1,500,000**

2,727 sq ft  
3 bedrooms  
2 baths

185 Crow Wing Lake Drive  
Akeley MN 56433

Waterfront: Eleventh Crow Wing

Status: Active

#### Description:

The most sought after property in all of Akeley Mn is now on the market. Are you looking to put your mark on a small town in northern Mn - look no further than the McGregor estate.

This large tract of land sits inside of Akeley city limits (city sewer and water hookups), adjacent 11th crow wing lake and the rest of the highly desired crow wing chain of lakes, within minutes of a large number of additional area lakes, 10 minutes to leech lake / 15 minutes to the park rapids area lakes all of which make fishing adventures endless and provide an abundance of boating, kayaking, canoeing opportunities.

If boating isn't your thing or your looking for a change of pace for the afternoon this estate is conveniently located on the heartland snowmobile trail that connects into the Paul Bunyan Forrest and the Chippewa forest system both of which connect Brainerd to Bemidji - Park Rapids to the Iron Range and beyond for all your atv / utv and snowmobile recreation exploring needs.

When I say this is a blank canvas with endless possibilities it is truly that. This property is perfect for a tiny home developement, public storage, acreage ranch house estates, a seasonal campground or discuss with the city possible rezoning ideas / opportunities.

The property currently has 20 seasonal campsites the produce some seasonal revenue, a tree farm and modest home / outbuildings on premise.

#### Additional Details:

Year Built	1979
Lot Acres	46
Lot Dimensions	Irregular
Garage Stalls	3
School District	113
Taxes	\$2,614
Taxes with Assessments	\$2,614

1 Listed By: 2025  
Coldwell Banker Realty

#### Additional Features:

Affinity Real Estate Inc. participates in the Regional Multiple Listing Service of Minnesota, Inc. Broker Reciprocity (RMBS) program, allowing us to display other broker's listings on our website. All properties are subject to prior sale, change or withdrawal.

#### Driving Directions:

From Hwy 34 in Akeley, N on Pleasant Ave to property on (L). Turn (L) on Crow Wing Lake Dr - property continues on (L) side.



Call Affinity Real Estate

**218-237-3333**

[info@affinityrealestate.com](mailto:info@affinityrealestate.com)

Air Conditioning: None



Affinity Real Estate - 600 Park Avenue South - Park Rapids MN 56470





website: [www.AffinityRealEstate.com](http://www.AffinityRealEstate.com) | email: [info@affinityrealestate.com](mailto:info@affinityrealestate.com) | office: 218-237-3333 | fax: 218-237-3377

**Affinity**  
REAL ESTATE INC

**\$1,500,000**

MLS 6801446 Lake Home  
185 Crow Wing Lake Drive  
Akeley MN 56433





website: [www.AffinityRealEstate.com](http://www.AffinityRealEstate.com) | email: [info@affinityrealestate.com](mailto:info@affinityrealestate.com) | office: 218-237-3333 | fax: 218-237-3377



**\$1,500,000**

MLS 6801446 Lake Home  
185 Crow Wing Lake Drive  
Akeley MN 56433





website: [www.AffinityRealEstate.com](http://www.AffinityRealEstate.com) | email: [info@affinityrealestate.com](mailto:info@affinityrealestate.com) | office: 218-237-3333 | fax: 218-237-3377



**\$1,500,000**

MLS 6801446 Lake Home  
185 Crow Wing Lake Drive  
Akeley MN 56433





website: [www.AffinityRealEstate.com](http://www.AffinityRealEstate.com) | email: [info@affinityrealestate.com](mailto:info@affinityrealestate.com) | office: 218-237-3333 | fax: 218-237-3377



**\$1,500,000**  
 MLS 6801446 Lake Home  
 185 Crow Wing Lake Drive  
 Akeley MN 56433





website: [www.AffinityRealEstate.com](http://www.AffinityRealEstate.com) | email: [info@affinityrealestate.com](mailto:info@affinityrealestate.com) | office: 218-237-3333 | fax: 218-237-3377



**\$1,500,000**

MLS 6801446 Lake Home  
185 Crow Wing Lake Drive  
Akeley MN 56433





website: [www.AffinityRealEstate.com](http://www.AffinityRealEstate.com) | email: [info@affinityrealestate.com](mailto:info@affinityrealestate.com) | office: 218-237-3333 | fax: 218-237-3377



**\$1,500,000**  
 MLS 6801446 Lake Home  
 185 Crow Wing Lake Drive  
 Akeley MN 56433





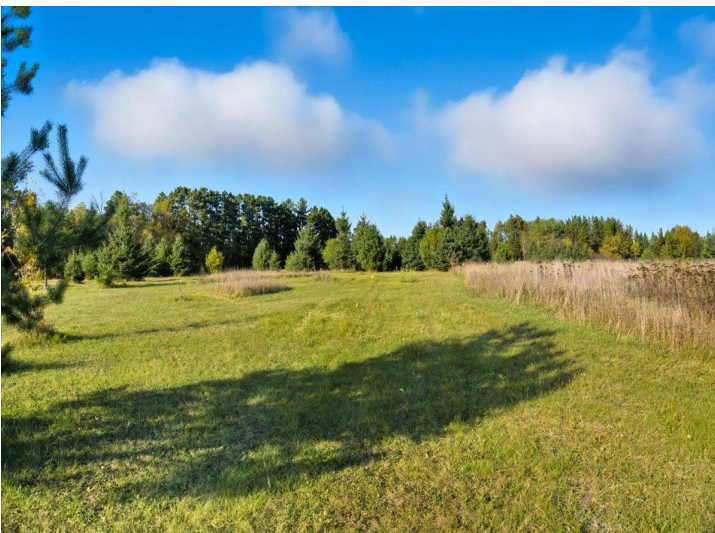
website: [www.AffinityRealEstate.com](http://www.AffinityRealEstate.com) | email: [info@affinityrealestate.com](mailto:info@affinityrealestate.com) | office: 218-237-3333 | fax: 218-237-3377



**\$1,500,000**

MLS 6801446 Lake Home  
185 Crow Wing Lake Drive  
Akeley MN 56433





website: [www.AffinityRealEstate.com](http://www.AffinityRealEstate.com) | email: [info@affinityrealestate.com](mailto:info@affinityrealestate.com) | office: 218-237-3333 | fax: 218-237-3377



**\$1,500,000**

MLS 6801446 Lake Home  
185 Crow Wing Lake Drive  
Akeley MN 56433