



MLS 6801476 Land

\$149,900

236.19 Acres

Other

XXX US Hwy 169

Aitkin MN 56469

Status: Active

Description:

This expansive property north of Aitkin offers prime Hwy 169 frontage with easy access - just pull in, set camp, and start exploring! The SOO Line Trail runs through the corner, linking you to endless ATV and snowmobile trails. Ride south to Palisade, North to Hill City, or challenge yourself at McGregor's Axtell Technical Riding Area. Hunters take note - this land is ideal for deer, bear, turkey, and grouse, with additional access to thousands of acres of state and county land. Love to fish? Several lakes are just minutes away. Whether you're after a weekend retreat or a year-round basecamp, this property has everything you need to outdoor adventure. Don't wait - schedule your showing today!

Additional Details:

Lot Acres	236.19
Lot Dimensions	see legal
School District	8001
Taxes	\$422
Taxes with Assessments	\$422
Tax Year	2024

Additional Features:

Driving Directions:

Take US Hwy 169 N out of Aitkin approximately 20 miles. Property is on your left (west side of highway) where SOO Line crossed highway, just south of where CR 18 goes to the east.



Listed By:
Edina Realty, Inc.

Affinity Real Estate Inc. participates in the Regional Multiple Listing Service of Minnesota, Inc Broker Reciprocity (sm) program, allowing us to display other broker's listings on our website. All properties are subject to prior sale, change or withdrawal.



Call Affinity Real Estate

218-237-3333

info@affinityrealestate.com



Affinity Real Estate - 600 Park Avenue South - Park Rapids MN 56470



website: www.AffinityRealEstate.com | email: info@affinityrealestate.com | office: 218-237-3333 | fax: 218-237-3377



\$149,900
 MLS 6801476 Land
 XXX US Hwy 169
 Aitkin MN 56469



website: www.AffinityRealEstate.com | email: info@affinityrealestate.com | office: 218-237-3333 | fax: 218-237-3377



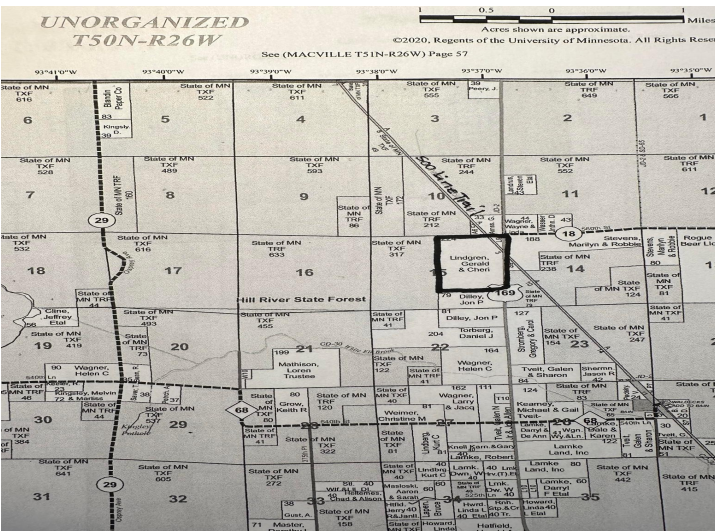
\$149,900
 MLS 6801476 Land
 XXX US Hwy 169
 Aitkin MN 56469



website: www.AffinityRealEstate.com | email: info@affinityrealestate.com | office: 218-237-3333 | fax: 218-237-3377



\$149,900
 MLS 6801476 Land
 XXX US Hwy 169
 Aitkin MN 56469



website: www.AffinityRealEstate.com | email: info@affinityrealestate.com | office: 218-237-3333 | fax: 218-237-3377



\$149,900
 MLS 6801476 Land
 XXX US Hwy 169
 Aitkin MN 56469