



MLS 6801626 Land

**\$169,995**

4.8 Acres

Other

TBD Aspen Ave

Menahga MN 56464

Status: Active

**Description:**

Huge pole building on 4.8 acres. Features 2010 construction measuring 40 x 144 for a total of 5,760 square feet. Private and wooded setting located on the south end of Menahga just off State Hwy 71. Currently zoned commercial but utilized in a personal use capacity. Seeking additional income or simply need extra storage? This is an awesome property with so many options.

**Additional Details:**

Lot Acres	4.8
Lot Dimensions	301 x 675 x 300 x 707
School District	821
Taxes	(unreported)
Taxes with Assessments	(unreported)
Tax Year	2025

**Additional Features:**

**Driving Directions:**

In Menahga: Go South on Aspen Ave (Hwy 71) to a left at the former Menahga, Marine and Rental. Proceed straight ahead to property on right.



Listed By:  
Affinity Real Estate Inc.

Affinity Real Estate Inc. participates in the Regional Multiple Listing Service of Minnesota, Inc Broker Reciprocity (sm) program, allowing us to display other broker's listings on our website. All properties are subject to prior sale, change or withdrawal.



**Call Affinity Real Estate**

**218-237-3333**

**info@affinityrealestate.com**



**Affinity Real Estate - 600 Park Avenue South - Park Rapids MN 56470**



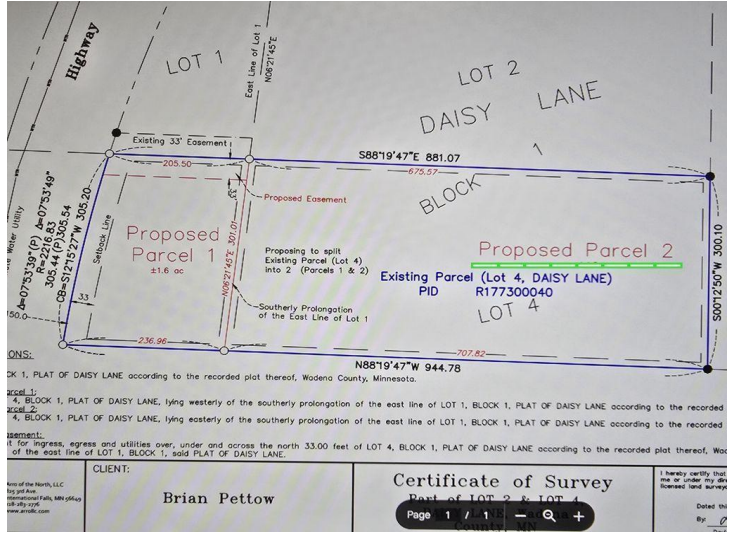
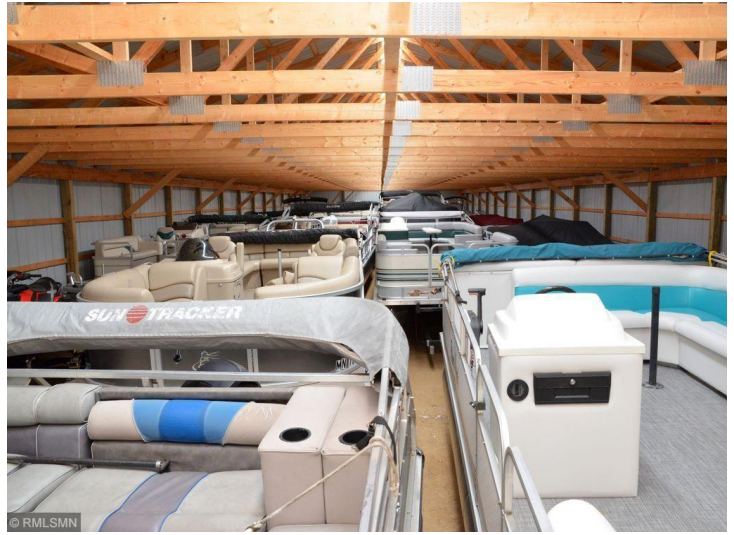


website: [www.AffinityRealEstate.com](http://www.AffinityRealEstate.com) | email: [info@affinityrealestate.com](mailto:info@affinityrealestate.com) | office: 218-237-3333 | fax: 218-237-3377



**\$169,995**  
 MLS 6801626 Land  
 TBD Aspen Ave  
 Menahga MN 56464





website: [www.AffinityRealEstate.com](http://www.AffinityRealEstate.com) | email: [info@affinityrealestate.com](mailto:info@affinityrealestate.com) | office: 218-237-3333 | fax: 218-237-3377



**\$169,995**  
MLS 6801626 Land  
TBD Aspen Ave  
Menahga MN 56464