



MLS 6801872 Commercial

\$239,000

702 5th Street
Bemidji MN 56601

Status: Active

Description:

Freshly updated and move-in ready, this office building offers a professional setting in a convenient Bemidji location. The interior has just been renovated from ceiling to carpet, giving the space a modern and welcoming feel.

The floor plan features three private offices, a generously sized lobby/reception area, a full kitchenette, and a well-appointed bathroom—ideal for businesses looking for both functionality and comfort. With flexible use options and a bright, refreshed atmosphere, this property is ready to support your operations from day one.

Additional Details:

Year Built	1981
Lot Acres	0.11
Lot Dimensions	140 x58
School District	31
Taxes	\$2,382
Taxes with Assessments	\$2,382
Tax Year	2023

Additional Features:

Fuel: Natural Gas **Heat:** Forced Air **Sewer:** City Sewer/Connected **Water:** City Water/Connected

Driving Directions:

Bemidji Avenue to 5th Street W, 702 building on the left side



Listed By:
Coldwell Banker Crown Realtors

Affinity Real Estate Inc. participates in the Regional Multiple Listing Service of Minnesota, Inc Broker Reciprocity (sm) program, allowing us to display other broker's listings on our website. All properties are subject to prior sale, change or withdrawal.



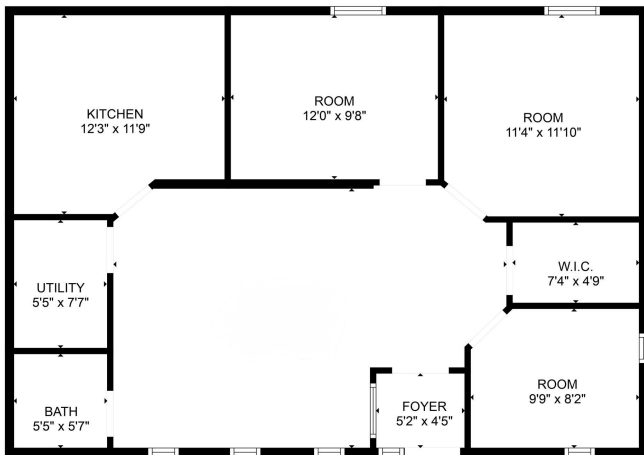
Call Affinity Real Estate

218-237-3333

info@affinityrealestate.com



Affinity Real Estate - 600 Park Avenue South - Park Rapids MN 56470



FLOOR PLAN CREATED BY CUBICASA APP; MEASUREMENTS DEEMED HIGHLY RELIABLE BUT NOT GUARANTEED.



website: www.AffinityRealEstate.com | email: info@affinityrealestate.com | office: 218-237-3333 | fax: 218-237-3377

Affinity
REAL ESTATE INC

\$239,000
MLS 6801872 Commercial
702 5th Street
Bemidji MN 56601



website: www.AffinityRealEstate.com | email: info@affinityrealestate.com | office: 218-237-3333 | fax: 218-237-3377



\$239,000
MLS 6801872 Commercial
702 5th Street
Bemidji MN 56601



website: www.AffinityRealEstate.com | email: info@affinityrealestate.com | office: 218-237-3333 | fax: 218-237-3377



\$239,000
 MLS 6801872 Commercial
 702 5th Street
 Bemidji MN 56601



website: www.AffinityRealEstate.com | email: info@affinityrealestate.com | office: 218-237-3333 | fax: 218-237-3377

Affinity
REAL ESTATE INC

\$239,000
MLS 6801872 Commercial
702 5th Street
Bemidji MN 56601