



MLS 6801921 Residential

\$299,900

1,310 sq ft
3 bedrooms
2 baths

3545 White Birch Avenue
Bemidji MN 56601

Status: Active

Description:

You'll want to see this freshly renovated East side home, with 3 bedrooms, 2 bathrooms, and 2 stall garage all on just under 2 acres!! Enjoy a fall campfire among the trees, set in the trees away from the home. Also plenty of space to add a second garage or shop!! So many updates have made this home completely move in ready!!

Additional Details:

Year Built	1947
Lot Acres	1.59
Lot Dimensions	160x440
Garage Stalls	2
School District	31
Taxes	\$1,152
Taxes with Assessments	\$1,152
Tax Year	2023

Additional Features:

Basement: Block **Fuel:** Oil **Garage:** 2 **Heat:** Ductless Mini-Split, Forced Air **Sewer:** Septic System Compliant - Yes **Water:** Submersible - 4 Inch, Drilled **Air Conditioning:** Ductless Mini-Split

Driving Directions:

north on lake ave, right onto Sherman, left onto White Birch, house on left



Listed By:
218 Real Estate

Affinity Real Estate Inc. participates in the Regional Multiple Listing Service of Minnesota, Inc Broker Reciprocity (sm) program, allowing us to display other broker's listings on our website. All properties are subject to prior sale, change or withdrawal.



Call Affinity Real Estate

218-237-3333

info@affinityrealestate.com



Affinity Real Estate - 600 Park Avenue South - Park Rapids MN 56470



website: www.AffinityRealEstate.com | email: info@affinityrealestate.com | office: 218-237-3333 | fax: 218-237-3377



\$299,900
 MLS 6801921 Residential
 3545 White Birch Avenue
 Bemidji MN 56601



website: www.AffinityRealEstate.com | email: info@affinityrealestate.com | office: 218-237-3333 | fax: 218-237-3377



\$299,900
 MLS 6801921 Residential
 3545 White Birch Avenue
 Bemidji MN 56601



website: www.AffinityRealEstate.com | email: info@affinityrealestate.com | office: 218-237-3333 | fax: 218-237-3377



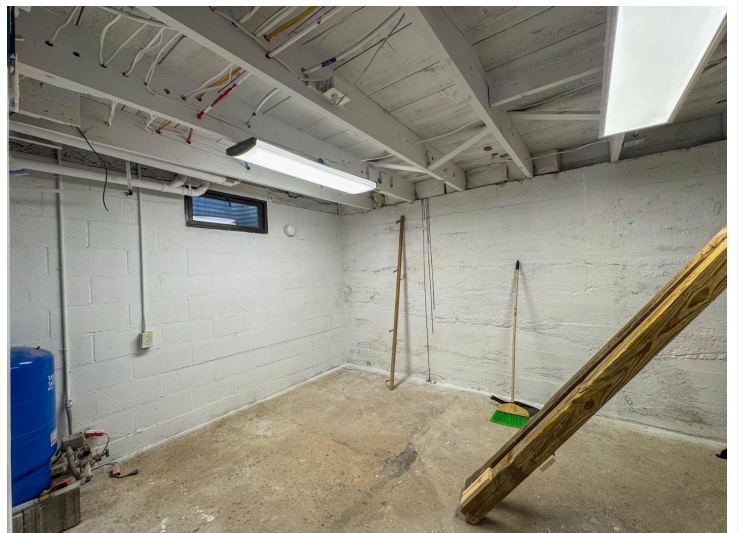
\$299,900
MLS 6801921 Residential
3545 White Birch Avenue
Bemidji MN 56601



website: www.AffinityRealEstate.com | email: info@affinityrealestate.com | office: 218-237-3333 | fax: 218-237-3377

Affinity
REAL ESTATE INC

\$299,900
MLS 6801921 Residential
3545 White Birch Avenue
Bemidji MN 56601



website: www.AffinityRealEstate.com | email: info@affinityrealestate.com | office: 218-237-3333 | fax: 218-237-3377



\$299,900
 MLS 6801921 Residential
 3545 White Birch Avenue
 Bemidji MN 56601



website: www.AffinityRealEstate.com | email: info@affinityrealestate.com | office: 218-237-3333 | fax: 218-237-3377



\$299,900
MLS 6801921 Residential
3545 White Birch Avenue
Bemidji MN 56601