



MLS 6801952 Residential

\$279,900

1,584 sq ft
3 bedrooms
2 baths

15823 169th Avenue
Park Rapids MN 56470

Status: Active

Description:

This 4-bed, 2-bath home offers convenient country living just outside of town. The main level features a spacious kitchen, dining, and living area that opens to a backyard deck—ideal for outdoor dining or entertaining. Upstairs includes two bedrooms and a full bath. Situated on a private double lot with 8.36 acres, the property includes an attached double garage, a 28x40 metal building, and a small barn—plenty of space for storage, hobbies, or animals. A great opportunity for space, privacy, and functionality close to town.

Additional Details:

Year Built	1978
Lot Acres	8.36
Lot Dimensions	559x636x550x669
Garage Stalls	2
School District	309
Taxes	\$1,720
Taxes with Assessments	\$1,720
Tax Year	2025

Additional Features:

Basement: Block, Finished **Fuel:** Electric, Wood **Garage:** 2 **Heat:** Baseboard, Boiler, Dual **Sewer:** Private Sewer **Water:** Drilled, Well **Air Conditioning:** None

Driving Directions:

From 34/71 in Park Rapids, East on 34 to a right on County 6. Follow to a right on 167th Ave to property.



Listed By:
Wolff & Simon Real Estate

Affinity Real Estate Inc. participates in the Regional Multiple Listing Service of Minnesota, Inc Broker Reciprocity (sm) program, allowing us to display other broker's listings on our website. All properties are subject to prior sale, change or withdrawal.



Call Affinity Real Estate

218-237-3333

info@affinityrealestate.com



Affinity Real Estate - 600 Park Avenue South - Park Rapids MN 56470



website: www.AffinityRealEstate.com | email: info@affinityrealestate.com | office: 218-237-3333 | fax: 218-237-3377

Affinity
REAL ESTATE INC

\$279,900
MLS 6801952 Residential
15823 169th Avenue
Park Rapids MN 56470



website: www.AffinityRealEstate.com | email: info@affinityrealestate.com | office: 218-237-3333 | fax: 218-237-3377

Affinity
REAL ESTATE INC

\$279,900
MLS 6801952 Residential
15823 169th Avenue
Park Rapids MN 56470



website: www.AffinityRealEstate.com | email: info@affinityrealestate.com | office: 218-237-3333 | fax: 218-237-3377

Affinity
REAL ESTATE INC

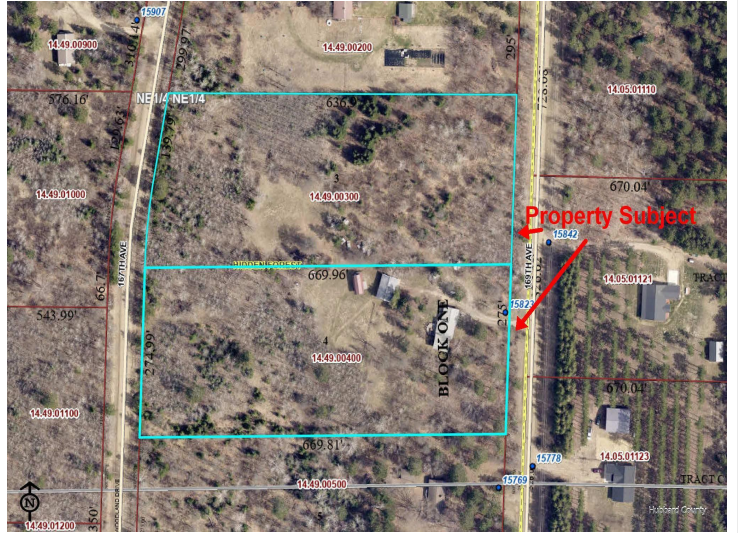
\$279,900
MLS 6801952 Residential
15823 169th Avenue
Park Rapids MN 56470



website: www.AffinityRealEstate.com | email: info@affinityrealestate.com | office: 218-237-3333 | fax: 218-237-3377

Affinity
REAL ESTATE INC

\$279,900
MLS 6801952 Residential
15823 169th Avenue
Park Rapids MN 56470



website: www.AffinityRealEstate.com | email: info@affinityrealestate.com | office: 218-237-3333 | fax: 218-237-3377



\$279,900
 MLS 6801952 Residential
 15823 169th Avenue
 Park Rapids MN 56470