



MLS 6801980 Commercial

**\$17,900**

101 Main Street  
Eagle Bend MN 56446

Status: Active

**Description:**

Great opportunity for a investor or someone looking for a project. Great location on Main Street in Eagle Bend. Building has a main level with a garage for a business and a apartment on the second level for owner occupancy or rental use. Great opportunity to restore some old world charm in a great location.

**Additional Details:**

Year Built	1935
Lot Acres	0.064
Lot Dimensions	30x95
Garage Stalls	1
School District	2267
Taxes	\$699
Taxes with Assessments	\$699
Tax Year	2025

**Additional Features:**

**Basement:** None **Fuel:** Array **Garage:** 1 **Heat:** Forced Air **Sewer:** City Sewer/Connected **Water:** City Water/Connected **Air Conditioning:** None

**Driving Directions:**

From US-71 S: US-71 S will come into town, turn left onto Main St W, shop will be on the left at the corner of Main St W and Central Ave N.



Listed By:  
eXp Realty

Affinity Real Estate Inc. participates in the Regional Multiple Listing Service of Minnesota, Inc Broker Reciprocity (sm) program, allowing us to display other broker's listings on our website. All properties are subject to prior sale, change or withdrawal.



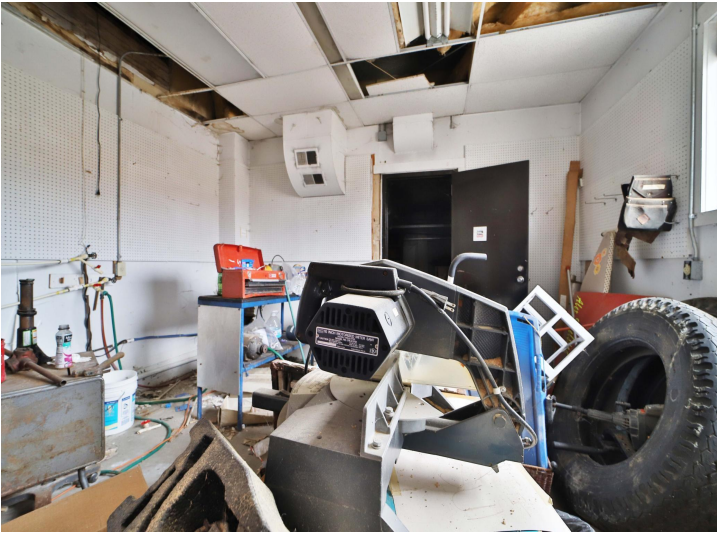
Call Affinity Real Estate

**218-237-3333**

[info@affinityrealestate.com](mailto:info@affinityrealestate.com)



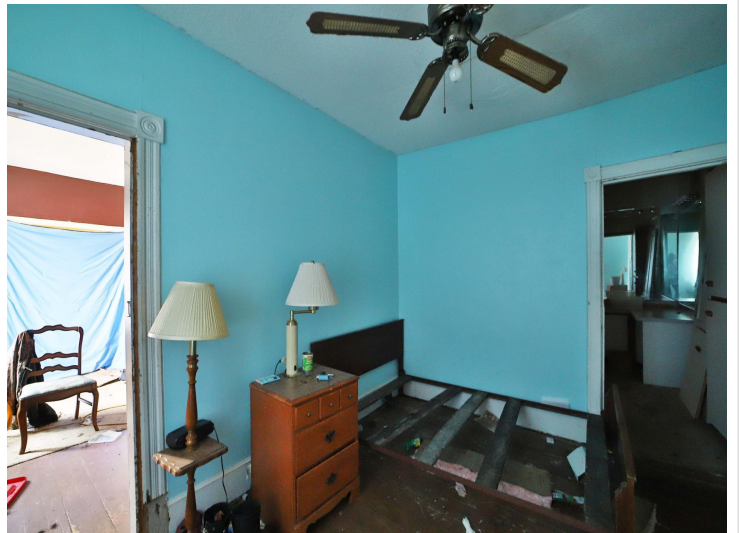
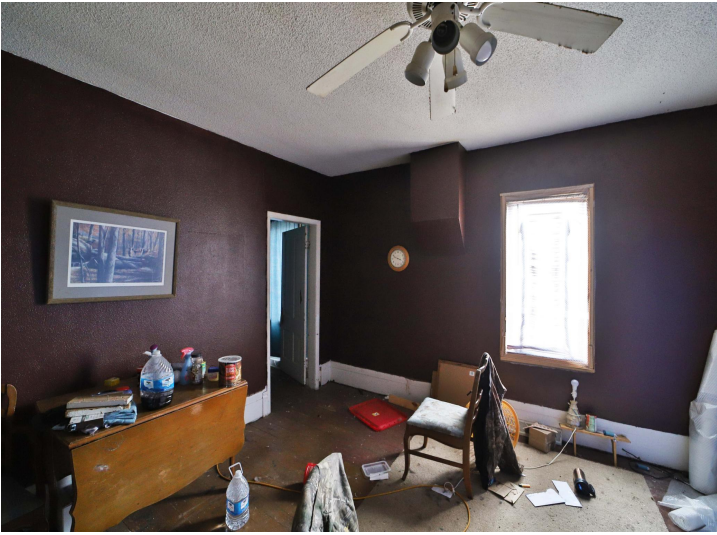
Affinity Real Estate - 600 Park Avenue South - Park Rapids MN 56470



website: [www.AffinityRealEstate.com](http://www.AffinityRealEstate.com) | email: [info@affinityrealestate.com](mailto:info@affinityrealestate.com) | office: 218-237-3333 | fax:218-237-3377

**Affinity**  
REAL ESTATE INC

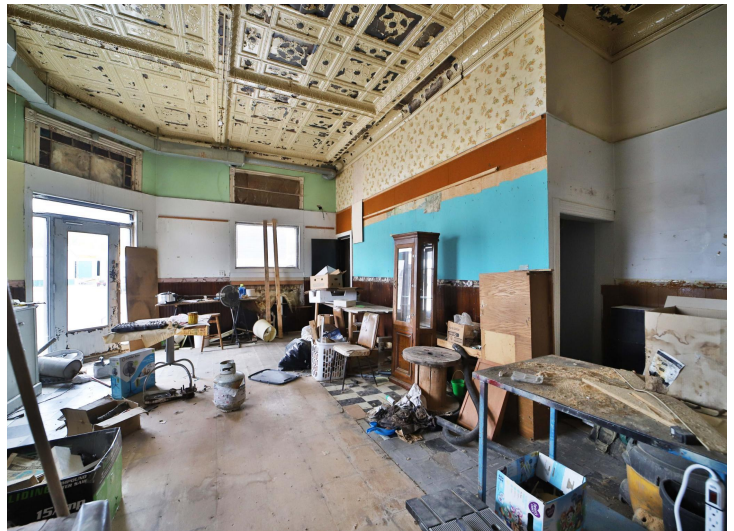
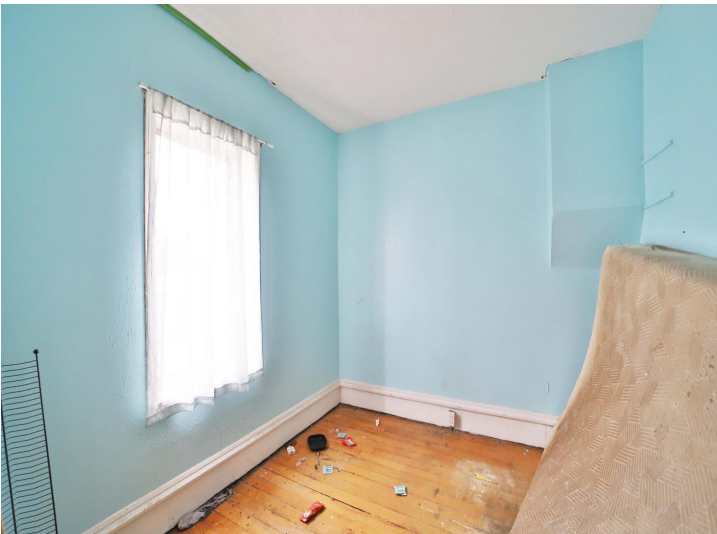
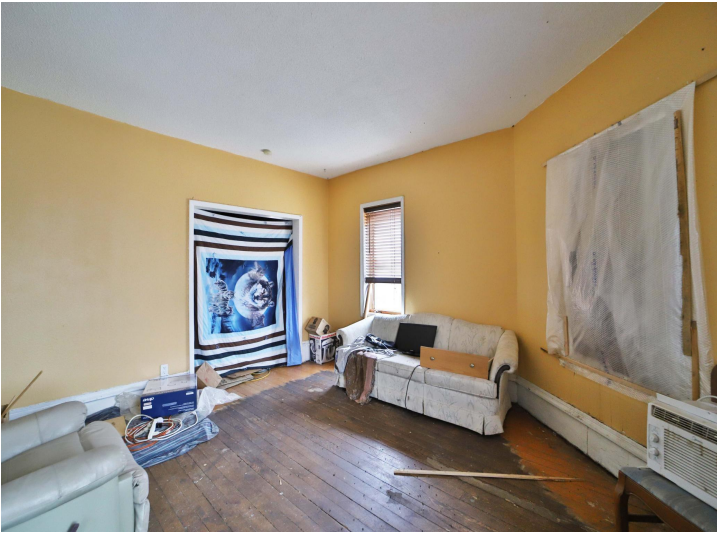
**\$17,900**  
MLS 6801980 Commercial  
101 Main Street  
Eagle Bend MN 56446



website: [www.AffinityRealEstate.com](http://www.AffinityRealEstate.com) | email: [info@affinityrealestate.com](mailto:info@affinityrealestate.com) | office: 218-237-3333 | fax:218-237-3377

**Affinity**  
REAL ESTATE INC

**\$17,900**  
MLS 6801980 Commercial  
101 Main Street  
Eagle Bend MN 56446



website: [www.AffinityRealEstate.com](http://www.AffinityRealEstate.com) | email: [info@affinityrealestate.com](mailto:info@affinityrealestate.com) | office: 218-237-3333 | fax:218-237-3377

**Affinity**  
REAL ESTATE INC

**\$17,900**  
MLS 6801980 Commercial  
101 Main Street  
Eagle Bend MN 56446



website: [www.AffinityRealEstate.com](http://www.AffinityRealEstate.com) | email: [info@affinityrealestate.com](mailto:info@affinityrealestate.com) | office: 218-237-3333 | fax:218-237-3377



**\$17,900**  
MLS 6801980 Commercial  
101 Main Street  
Eagle Bend MN 56446