



MLS 6802031 Residential

\$589,000

2,312 sq ft
3 bedrooms
3 baths

1694 Hazelnut Lane
Pine River MN 56474

Status: Active

Description:

Welcome to Bear Paw Cabin, a beautifully built 3-bedroom, 3-bath retreat on peaceful Hay Lake. Constructed in 2021–2022, this custom cabin blends Up North charm with modern amenities and offers spacious living throughout. All bedrooms are generous in size, including a primary suite with a stone shower and private deck overlooking the lake, ideal for relaxing mornings or unwinding in the evening.

The home features a huge dining area perfect for entertaining, while the upstairs family/game room provides extra space for fun and connection. Outside, the patio showcases a custom bear paw fireplace, the namesake of the cabin, making it a cozy spot to enjoy evenings after a day on the water.


The unfinished basement provides ample opportunity to add extra living space, a game room, or additional bedrooms. The property includes a two-stall attached garage, private dock, and access to year-round lake recreation.

Bear Paw Cabin has also been a successful short-term rental, offering an excellent income-producing opportunity. Located near Ponto Lake, Lake Ada, and Woman Lake, this retreat combines privacy, convenience, and endless outdoor activities. Whether you're seeking a year-round home, a private getaway, or an investment property, Bear Paw Cabin delivers the perfect blend of relaxation, recreation, and comfort.

Additional Details:

Year Built	2021
Lot Acres	0.61
Lot Dimensions	64x328x104x303
Garage Stalls	2
School District	1065
Taxes	\$2,068
Taxes with Assessments	\$2,068
Tax Year	2025

Additional Features:


 Listed By:
Coldwell Banker Realty

Affinity Real Estate Inc. participates in the Regional Multiple Listing Service of Minnesota, Inc. Broker Reciprocity (sm) program, allowing us to display other broker's listings on our website. All properties are subject to prior sale, change or withdrawal.



Call Affinity Real Estate

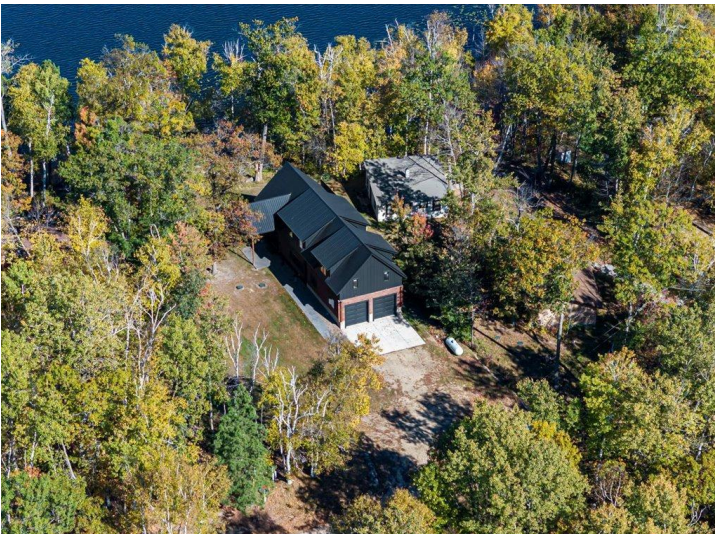
218-237-3333

info@affinityrealestate.com

Go to Hwy 84, go straight ahead on 84 for about a mile, turn right onto City Rd 49. Go 1.2 miles where 49 will curve to the left to Hay Lake Dr. Go left to Hay Lake Dr. Go



Affinity Real Estate - 600 Park Avenue South - Park Rapids MN 56470



website: www.AffinityRealEstate.com | email: info@affinityrealestate.com | office: 218-237-3333 | fax: 218-237-3377



\$589,000
 MLS 6802031 Residential
 1694 Hazelnut Lane
 Pine River MN 56474



website: www.AffinityRealEstate.com | email: info@affinityrealestate.com | office: 218-237-3333 | fax: 218-237-3377

Affinity
REAL ESTATE INC

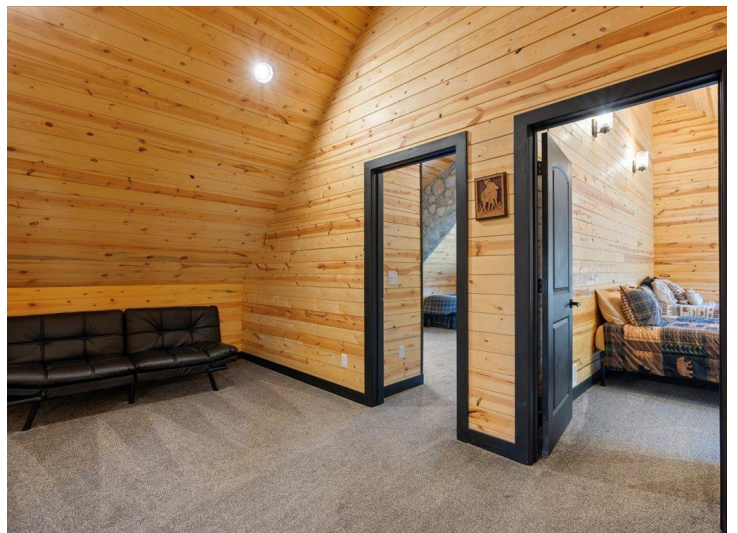
\$589,000
MLS 6802031 Residential
1694 Hazelnut Lane
Pine River MN 56474



website: www.AffinityRealEstate.com | email: info@affinityrealestate.com | office: 218-237-3333 | fax: 218-237-3377



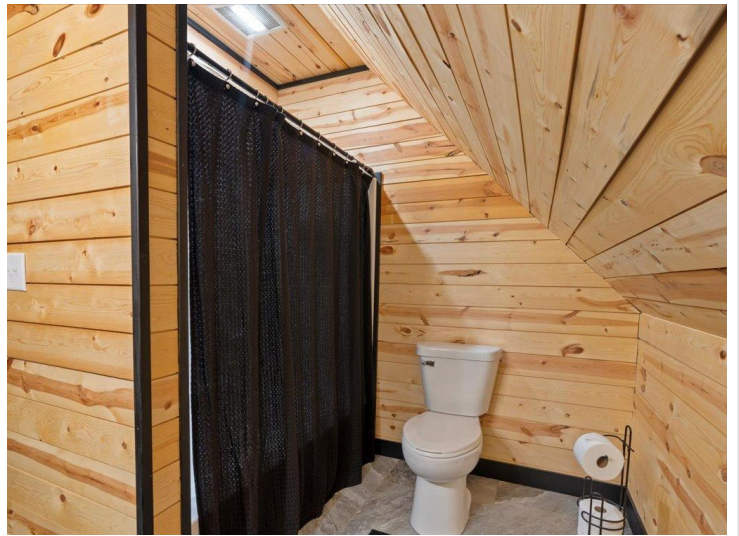
\$589,000
 MLS 6802031 Residential
 1694 Hazelnut Lane
 Pine River MN 56474



website: www.AffinityRealEstate.com | email: info@affinityrealestate.com | office: 218-237-3333 | fax: 218-237-3377



\$589,000
 MLS 6802031 Residential
 1694 Hazelnut Lane
 Pine River MN 56474



website: www.AffinityRealEstate.com | email: info@affinityrealestate.com | office: 218-237-3333 | fax: 218-237-3377



\$589,000
MLS 6802031 Residential
1694 Hazelnut Lane
Pine River MN 56474



website: www.AffinityRealEstate.com | email: info@affinityrealestate.com | office: 218-237-3333 | fax: 218-237-3377

Affinity
REAL ESTATE INC

\$589,000

MLS 6802031 Residential
1694 Hazelnut Lane
Pine River MN 56474



website: www.AffinityRealEstate.com | email: info@affinityrealestate.com | office: 218-237-3333 | fax: 218-237-3377



\$589,000
 MLS 6802031 Residential
 1694 Hazelnut Lane
 Pine River MN 56474



website: www.AffinityRealEstate.com | email: info@affinityrealestate.com | office: 218-237-3333 | fax: 218-237-3377



\$589,000
MLS 6802031 Residential
1694 Hazelnut Lane
Pine River MN 56474