



MLS 6803650 Residential

\$179,000

1,792 sq ft
3 bedrooms
2 baths

15229 County Road 13
Menahga MN 56464

Status: Pending

Description:

Enjoy peace and privacy on this beautifully wooded property with the Cat River running through it — a true nature lover’s paradise and a fantastic trout stream. This 3-bedroom, 2-bathroom home offers convenient main-floor living and features stainless steel appliances, a newer roof, and a compliant septic system for peace of mind. Outside, you’ll find a spacious 2-stall detached garage with a heated workshop in the back — perfect for hobbies, projects, or extra storage. Check out this year-round home with property that offers the best of country living surrounded by nature.

Additional Details:

Year Built	2003
Lot Acres	5
Lot Dimensions	Irregular
Garage Stalls	2
School District	820
Taxes	\$1,898
Taxes with Assessments	\$1,898
Tax Year	2025

Additional Features:

Basement: None **Fuel:** Array **Garage:** 2 **Heat:** Forced Air, Heat Pump **Sewer:** Septic System Compliant - Yes **Water:** Drilled, Well **Air Conditioning:** Central Air, Heat Pump

Driving Directions:

North of Sebeka on Highway 71. Right onto Highway 13. 2.5 miles to property which is on the left



Listed By:
Centennial Realty

Affinity Real Estate Inc. participates in the Regional Multiple Listing Service of Minnesota, Inc Broker Reciprocity (sm) program, allowing us to display other broker’s listings on our website. All properties are subject to prior sale, change or withdrawal.



Call Affinity Real Estate

218-237-3333

info@affinityrealestate.com



Affinity Real Estate - 600 Park Avenue South - Park Rapids MN 56470



website: www.AffinityRealEstate.com | email: info@affinityrealestate.com | office: 218-237-3333 | fax:218-237-3377



\$179,000
MLS 6803650 Residential
15229 County Road 13
Menahga MN 56464



website: www.AffinityRealEstate.com | email: info@affinityrealestate.com | office: 218-237-3333 | fax:218-237-3377



\$179,000
MLS 6803650 Residential
15229 County Road 13
Menahga MN 56464



website: www.AffinityRealEstate.com | email: info@affinityrealestate.com | office: 218-237-3333 | fax:218-237-3377

Affinity
REAL ESTATE INC

\$179,000
MLS 6803650 Residential
15229 County Road 13
Menahga MN 56464



website: www.AffinityRealEstate.com | email: info@affinityrealestate.com | office: 218-237-3333 | fax: 218-237-3377

Affinity
REAL ESTATE INC

\$179,000
MLS 6803650 Residential
15229 County Road 13
Menahga MN 56464



website: www.AffinityRealEstate.com | email: info@affinityrealestate.com | office: 218-237-3333 | fax:218-237-3377

Affinity
REAL ESTATE INC

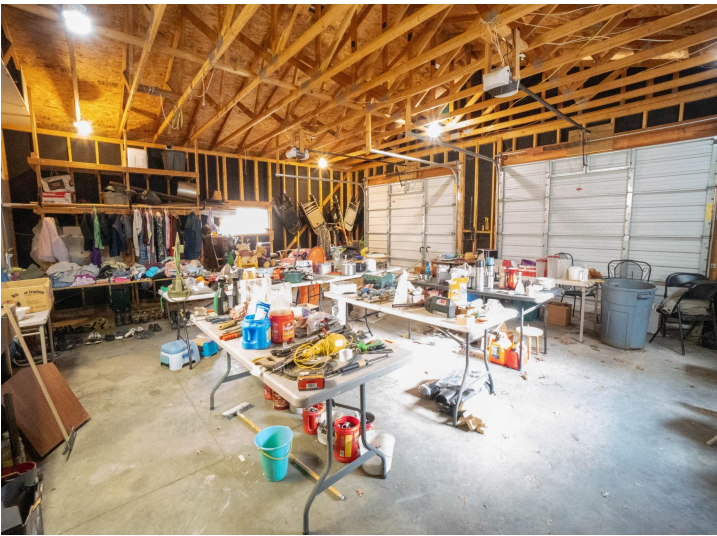
\$179,000
MLS 6803650 Residential
15229 County Road 13
Menahga MN 56464



website: www.AffinityRealEstate.com | email: info@affinityrealestate.com | office: 218-237-3333 | fax:218-237-3377

Affinity
REAL ESTATE INC

\$179,000
MLS 6803650 Residential
15229 County Road 13
Menahga MN 56464



website: www.AffinityRealEstate.com | email: info@affinityrealestate.com | office: 218-237-3333 | fax:218-237-3377

Affinity
REAL ESTATE INC

\$179,000
MLS 6803650 Residential
15229 County Road 13
Menahga MN 56464