



MLS 6804252 Land

\$144,900

4.56 Acres

Raw Land

Tract D TBD Little Pine Road
Brainerd MN 56401

Status: Active

Description:

Beautiful wooded executive lots offering stunning north and south views over a peaceful natural wetland. Located just west of the Baxter city limits, these parcels combine the quiet of the country with quick access to shopping, dining, trails, lakes, and golf. Crow Wing Power and CTC fiber are available at the street. Bring your builder and explore the many ways to create your dream home surrounded by breathtaking scenery.

Additional Details:

Lot Acres	4.56
Lot Dimensions	203x1013x200x971
School District	116
Taxes	\$268
Taxes with Assessments	\$268
Tax Year	2025

Additional Features:

Driving Directions:

West on MN 210 to right onto Little Pine Dr Rd.



Listed By:
Positive Realty

Affinity Real Estate Inc. participates in the Regional Multiple Listing Service of Minnesota, Inc Broker Reciprocity (sm) program, allowing us to display other broker's listings on our website. All properties are subject to prior sale, change or withdrawal.



Call Affinity Real Estate

218-237-3333

info@affinityrealestate.com



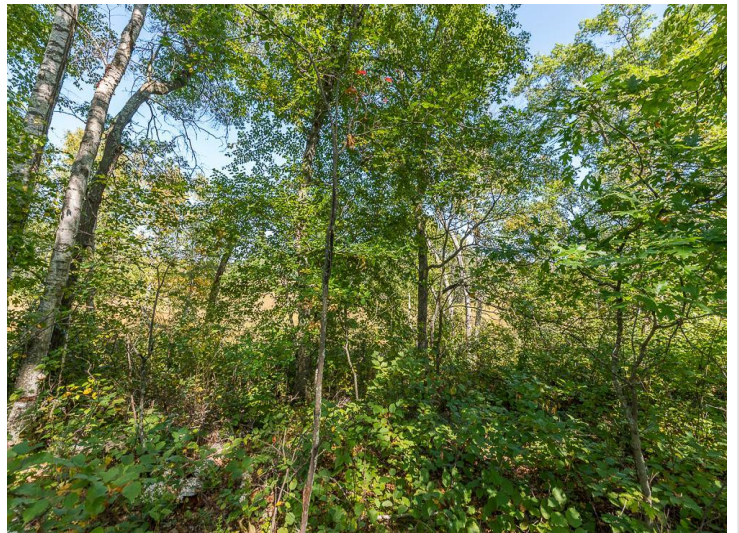
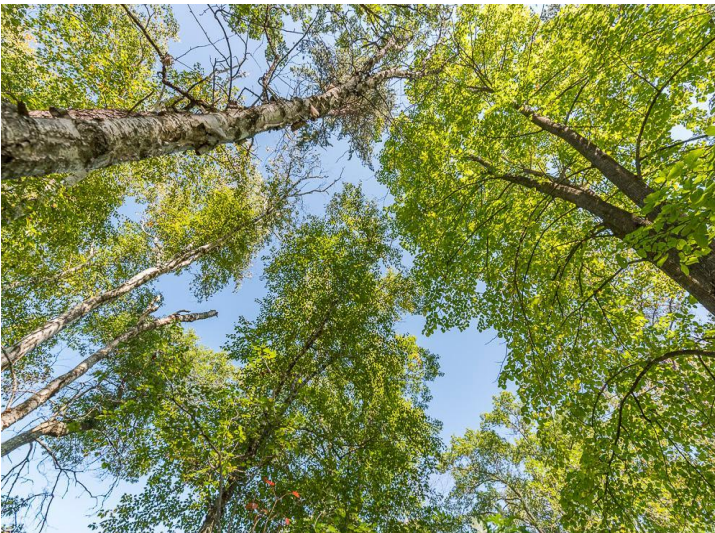
Affinity Real Estate - 600 Park Avenue South - Park Rapids MN 56470



website: www.AffinityRealEstate.com | email: info@affinityrealestate.com | office: 218-237-3333 | fax: 218-237-3377



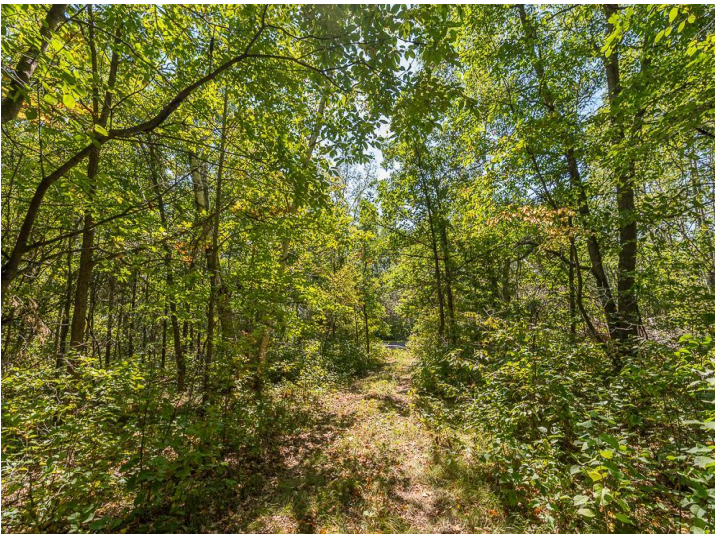
\$144,900
 MLS 6804252 Land
 Tract D TBD Little Pine Road
 Brainerd MN 56401



website: www.AffinityRealEstate.com | email: info@affinityrealestate.com | office: 218-237-3333 | fax: 218-237-3377



\$144,900
MLS 6804252 Land
Tract D TBD Little Pine Road
Brainerd MN 56401



website: www.AffinityRealEstate.com | email: info@affinityrealestate.com | office: 218-237-3333 | fax: 218-237-3377



\$144,900
 MLS 6804252 Land
 Tract D TBD Little Pine Road
 Brainerd MN 56401



website: www.AffinityRealEstate.com | email: info@affinityrealestate.com | office: 218-237-3333 | fax: 218-237-3377



\$144,900
 MLS 6804252 Land
 Tract D TBD Little Pine Road
 Brainerd MN 56401



website: www.AffinityRealEstate.com | email: info@affinityrealestate.com | office: 218-237-3333 | fax: 218-237-3377



\$144,900
MLS 6804252 Land
Tract D TBD Little Pine Road
Brainerd MN 56401