



MLS 6804627 Lake Home

\$264,900

1,824 sq ft
3 bedrooms
2 baths

3649 County Road 168
Pequot Lakes MN 56472

Waterfront: Mayo

Status: Pending

Description:

Enjoy 270 feet of natural shoreline on Mayo Lake from this 3-bedroom, 2-bath home situated on 1.37 acres in the heart of lake country. The home offers 1,824 total square feet, featuring log siding, two fireplaces, a lakeside deck, and a walkout lower level with family room and spacious office or recreation area. The property includes a detached 2-car garage and a 16x36 (576 sq ft) insulated and heated outbuilding finished in tongue-and-groove pine—ideal as a mancave, she shed, or guest retreat. Outside, you'll find a lakeside patio and ample room to enjoy peaceful wooded privacy and beautiful lake views. A rare opportunity to own substantial frontage on a quiet recreational lake just minutes from Pequot Lakes.

Additional Details:

Year Built	1986
Lot Acres	1.37
Lot Dimensions	1.37 acres
Garage Stalls	2
School District	186
Taxes	\$2,548
Taxes with Assessments	\$2,548
Tax Year	2025

Additional Features:

Basement: Finished, Full, Walkout **Fuel:** Propane **Garage:** 2 **Heat:** Forced Air **Sewer:** Septic System Compliant - No **Water:** Well **Air Conditioning:** None

Driving Directions:

From downtown Pequot Lakes: South on Patriot Ave. Right on County rd 168, 1st property past bridge on left



Listed By:
Gallery of Homes

Affinity Real Estate Inc. participates in the Regional Multiple Listing Service of Minnesota, Inc Broker Reciprocity (sm) program, allowing us to display other broker's listings on our website. All properties are subject to prior sale, change or withdrawal.



Call Affinity Real Estate

218-237-3333

info@affinityrealestate.com



Affinity Real Estate - 600 Park Avenue South - Park Rapids MN 56470



website: www.AffinityRealEstate.com | email: info@affinityrealestate.com | office: 218-237-3333 | fax: 218-237-3377



\$264,900
 MLS 6804627 Lake Home
 3649 County Road 168
 Pequot Lakes MN 56472



website: www.AffinityRealEstate.com | email: info@affinityrealestate.com | office: 218-237-3333 | fax: 218-237-3377

Affinity
REAL ESTATE INC

\$264,900
MLS 6804627 Lake Home
3649 County Road 168
Pequot Lakes MN 56472



website: www.AffinityRealEstate.com | email: info@affinityrealestate.com | office: 218-237-3333 | fax: 218-237-3377

Affinity
REAL ESTATE INC

\$264,900
MLS 6804627 Lake Home
3649 County Road 168
Pequot Lakes MN 56472



website: www.AffinityRealEstate.com | email: info@affinityrealestate.com | office: 218-237-3333 | fax: 218-237-3377



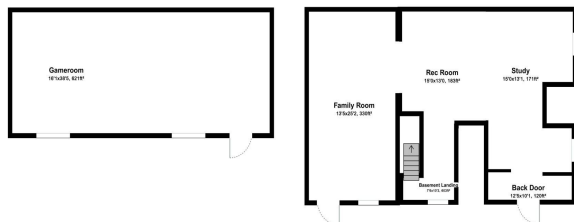
\$264,900
 MLS 6804627 Lake Home
 3649 County Road 168
 Pequot Lakes MN 56472



website: www.AffinityRealEstate.com | email: info@affinityrealestate.com | office: 218-237-3333 | fax: 218-237-3377

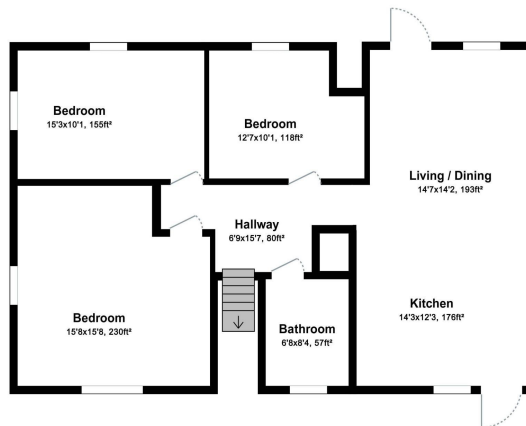


\$264,900
 MLS 6804627 Lake Home
 3649 County Road 168
 Pequot Lakes MN 56472



For illustration purposes only. Not to scale.

Ground Floor



For illustration purposes only. Not to scale.

1st Floor

website: www.AffinityRealEstate.com | email: info@affinityrealestate.com | office: 218-237-3333 | fax: 218-237-3377



\$264,900

MLS 6804627 Lake Home
3649 County Road 168
Pequot Lakes MN 56472