



MLS 6805704 Residential

\$339,999

2,256 sq ft
3 bedrooms
3 baths

37263 Pine Cone Drive
Menahga MN 56464

Status: Active

Description:

Enjoy an almost 2500 sq ft home that sits on 5.5 acres just minutes from Menahga. This 3-bedroom, 3 bath home with an attached garage is well suited for families who want extra yard space or a work from home situation. This property is mostly wooded which offers a lot of privacy. Enjoy the open concept living space that also has a family room in the lower level. The spacious kitchen is well equipped with stainless steel appliances and attractive cabinetry. Downstairs are two bonus rooms with egress windows (sewer system is sized for 3 beds) Car hoist and 80-gallon compressor tank is staying with the property in the shop. Have your own workshop or hobby area in the 40x30 heated garage with the bonus of 200amp service in the house and garage. Schedule a showing today! This is a solid well built home!

Additional Details:

Year Built	2010
Lot Acres	5.47
Lot Dimensions	100x90x531x497x462x412
Garage Stalls	1
School District	2286
Taxes	\$2,830
Taxes with Assessments	\$2,900
Tax Year	2025

Additional Features:

Basement: Finished, Full **Fuel:** Array **Garage:** 1 **Heat:** Forced Air, In-Floor Heating **Sewer:** Septic System Compliant - Yes **Water:** Drilled **Air Conditioning:** Central Air

Driving Directions:

Go East on Main St in Menahga. Follow curves on Twin Lakes Road. Take a left on the Second Pine Cone Drive. House is on Right.



Listed By:
National Realty Guild

Affinity Real Estate Inc. participates in the Regional Multiple Listing Service of Minnesota, Inc Broker Reciprocity (sm) program, allowing us to display other broker's listings on our website. All properties are subject to prior sale, change or withdrawal.



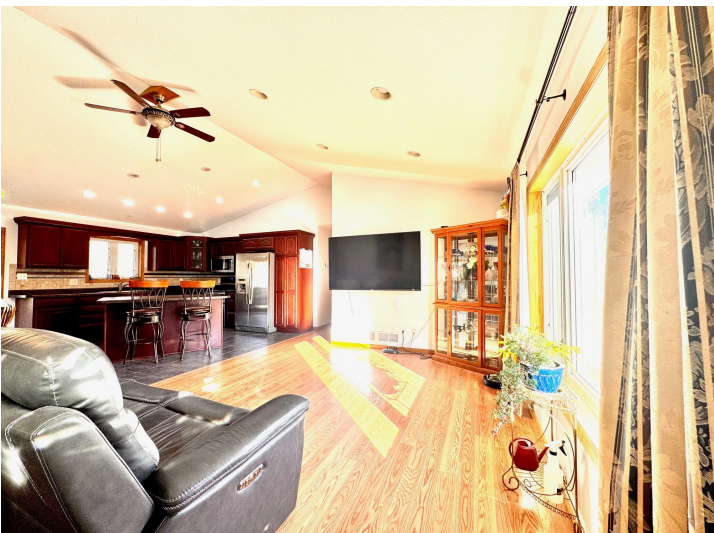
Call Affinity Real Estate

218-237-3333

info@affinityrealestate.com



Affinity Real Estate - 600 Park Avenue South - Park Rapids MN 56470



website: www.AffinityRealEstate.com | email: info@affinityrealestate.com | office: 218-237-3333 | fax: 218-237-3377

Affinity
REAL ESTATE INC

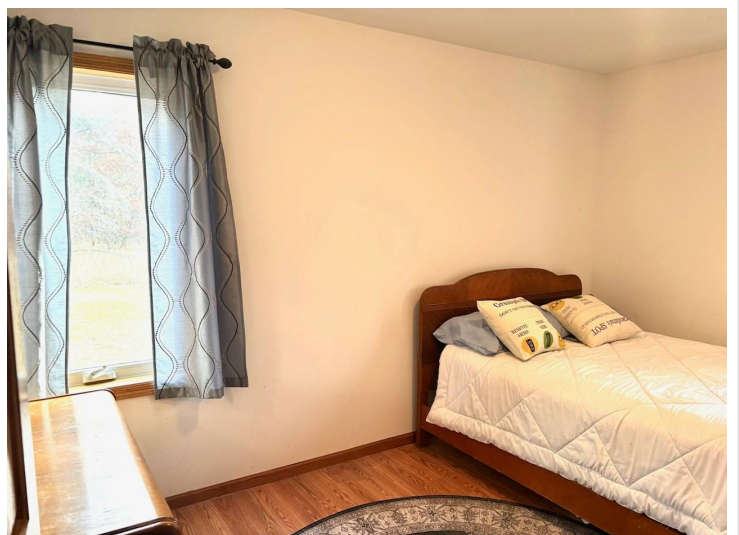
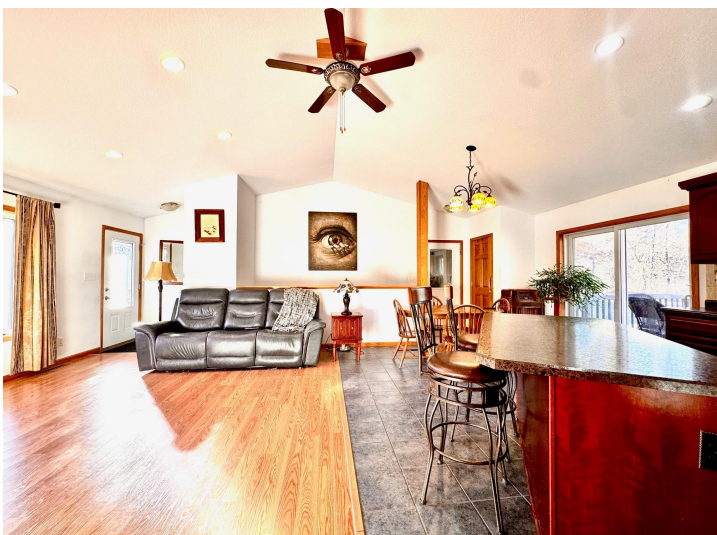
\$339,999
MLS 6805704 Residential
37263 Pine Cone Drive
Menahga MN 56464



website: www.AffinityRealEstate.com | email: info@affinityrealestate.com | office: 218-237-3333 | fax: 218-237-3377

Affinity
REAL ESTATE INC

\$339,999
MLS 6805704 Residential
37263 Pine Cone Drive
Menahga MN 56464



website: www.AffinityRealEstate.com | email: info@affinityrealestate.com | office: 218-237-3333 | fax: 218-237-3377

Affinity
REAL ESTATE INC

\$339,999
MLS 6805704 Residential
37263 Pine Cone Drive
Menahga MN 56464



website: www.AffinityRealEstate.com | email: info@affinityrealestate.com | office: 218-237-3333 | fax: 218-237-3377

Affinity
REAL ESTATE INC

\$339,999
MLS 6805704 Residential
37263 Pine Cone Drive
Menahga MN 56464



website: www.AffinityRealEstate.com | email: info@affinityrealestate.com | office: 218-237-3333 | fax: 218-237-3377

Affinity
REAL ESTATE INC

\$339,999
MLS 6805704 Residential
37263 Pine Cone Drive
Menahga MN 56464



website: www.AffinityRealEstate.com | email: info@affinityrealestate.com | office: 218-237-3333 | fax: 218-237-3377

Affinity
REAL ESTATE INC

\$339,999
MLS 6805704 Residential
37263 Pine Cone Drive
Menahga MN 56464



website: www.AffinityRealEstate.com | email: info@affinityrealestate.com | office: 218-237-3333 | fax: 218-237-3377

Affinity
REAL ESTATE INC

\$339,999
MLS 6805704 Residential
37263 Pine Cone Drive
Menahga MN 56464



website: www.AffinityRealEstate.com | email: info@affinityrealestate.com | office: 218-237-3333 | fax: 218-237-3377



\$339,999
 MLS 6805704 Residential
 37263 Pine Cone Drive
 Menahga MN 56464



website: www.AffinityRealEstate.com | email: info@affinityrealestate.com | office: 218-237-3333 | fax: 218-237-3377



\$339,999
 MLS 6805704 Residential
 37263 Pine Cone Drive
 Menahga MN 56464