



MLS 6805981 Lake Land

\$235,000

Description:

Lake Melissa! Build the lake home of your dreams with breath taking views that are hard to find in the Detroit Lakes area. Easement access is provided down to the waters edge. The lower level at the water's edge is shared access. 1.64 acres leaves you with so many potential building options. Lake Melissa is famous for its water recreation and social environment. The lower level of the lot at the lake allows for a golf cart or UTV to bring you up and down the crushed asphalt path. Lots of room for entertaining and hanging out at the beach. Bring your imagination and dream home plans to life here on the high shores of Lake Melissa!

Additional Details:

Lot Acres	1.64
Lot Dimensions	Irregular
School District	22
Taxes	\$1,010
Taxes with Assessments	\$1,010
Tax Year	2025

Additional Features:

Driving Directions:

From Hwy 10 and US HWY 59 S - Head southwest on US-59 S toward Morrow Ave 1.0 miles, At the traffic circle, continue straight to stay on US-59 S
3.7 miles, At the traffic circle, take the 2nd exit and stay on US-59S 0.9 miles, turn right onto W meadow Lake Ln, destination is on the right.



Listed By:
Jack Chivers Realty

Affinity Real Estate Inc. participates in the Regional Multiple Listing Service of Minnesota, Inc Broker Reciprocity (sm) program, allowing us to display other broker's listings on our website. All properties are subject to prior sale, change or withdrawal.



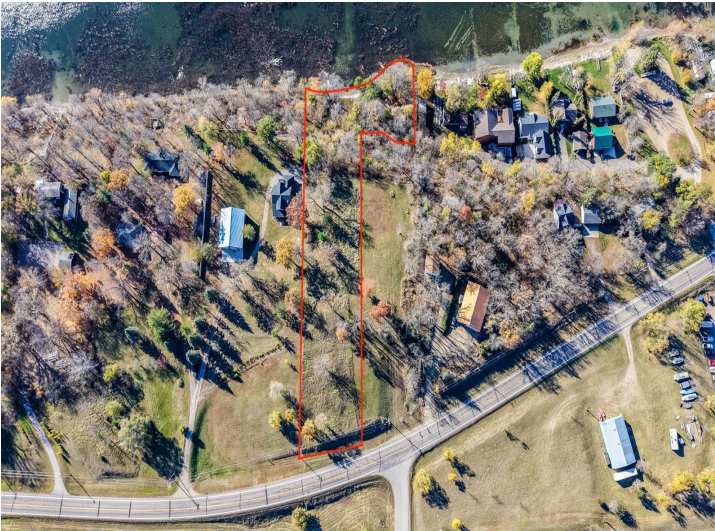
Call Affinity Real Estate

218-237-3333

info@affinityrealestate.com



Affinity Real Estate - 600 Park Avenue South - Park Rapids MN 56470

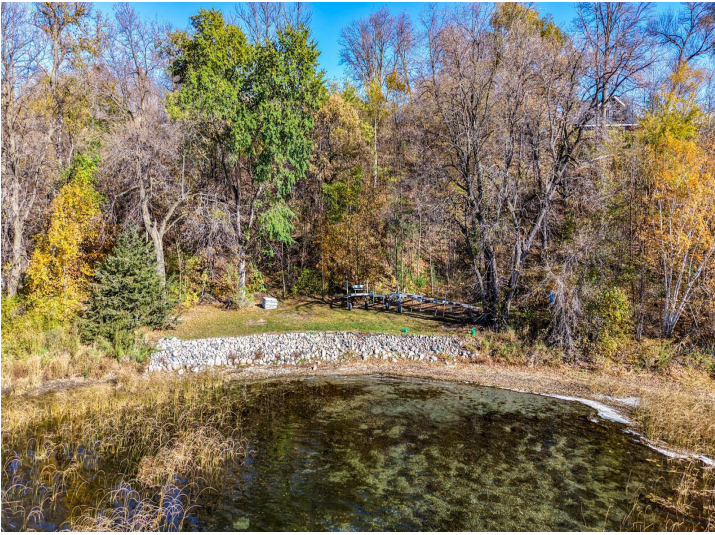


website: www.AffinityRealEstate.com | email: info@affinityrealestate.com | office: 218-237-3333 | fax: 218-237-3377

Affinity
REAL ESTATE INC

\$235,000

MLS 6805981 Lake Land
12xxx Co Hwy 17
Detroit Lakes MN 56501



website: www.AffinityRealEstate.com | email: info@affinityrealestate.com | office: 218-237-3333 | fax: 218-237-3377



\$235,000

MLS 6805981 Lake Land
12xxx Co Hwy 17
Detroit Lakes MN 56501