



MLS 6806269 Lake Home

\$549,000

2,572 sq ft
3 bedrooms
3 baths

36589 County Highway 35
Dent MN 56528

Waterfront: Star

Status: Active

Description:

Star Lake-Otter Tail Co, MN: Large lot with 180' of frontage and easy access off paved county road. Star Lake is known for it's excellent fishing and great recreational opportunities. This property includes a stylish 2021 3 bedroom home with an open floor plan, vaulted ceiling, gas fireplace, and a cozy, covered lakeside patio to enjoy the fabulous sunsets. The 24x32 detached garage is ready to finish and was designed for loft space and a lakeside deck. Priced well below tax assessed value - this year round, main level living home is ready to enjoy!

Additional Details:

Year Built	2021
Lot Acres	0.82
Lot Dimensions	180x185
Garage Stalls	2
School District	549
Taxes	\$4,344
Taxes with Assessments	\$4,344
Tax Year	2025

Additional Features:

Basement: None **Fuel:** Propane **Garage:** 2 **Heat:** Boiler, Ductless Mini-Split, Fireplace(s), In-Floor Heating **Sewer:** Holding Tank, Septic System Compliant - Yes **Water:** Drilled, Private, Well **Air Conditioning:** Ductless Mini-Split

Driving Directions:

From Dent: SW on Co Hwy #35 approx 7 miles to house #36589



Listed By:
Coldwell Banker Preferred Partners

Affinity Real Estate Inc. participates in the Regional Multiple Listing Service of Minnesota, Inc Broker Reciprocity (sm) program, allowing us to display other broker's listings on our website. All properties are subject to prior sale, change or withdrawal.



Call Affinity Real Estate

218-237-3333

info@affinityrealestate.com



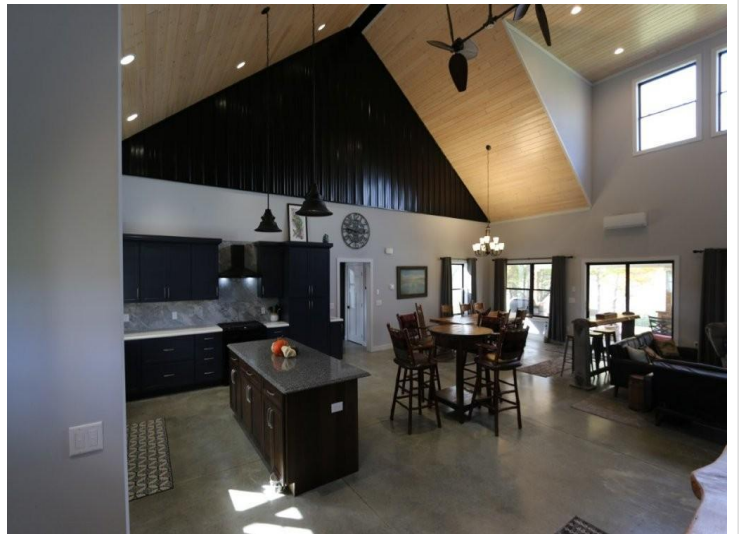
Affinity Real Estate - 600 Park Avenue South - Park Rapids MN 56470



website: www.AffinityRealEstate.com | email: info@affinityrealestate.com | office: 218-237-3333 | fax:218-237-3377



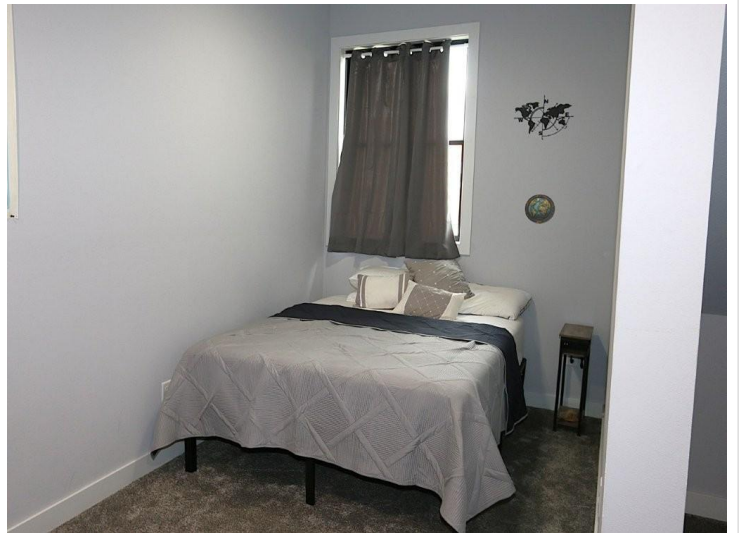
\$549,000
MLS 6806269 Lake Home
36589 County Highway 35
Dent MN 56528



website: www.AffinityRealEstate.com | email: info@affinityrealestate.com | office: 218-237-3333 | fax: 218-237-3377

Affinity
REAL ESTATE INC

\$549,000
MLS 6806269 Lake Home
36589 County Highway 35
Dent MN 56528



website: www.AffinityRealEstate.com | email: info@affinityrealestate.com | office: 218-237-3333 | fax:218-237-3377

Affinity
REAL ESTATE INC

\$549,000
MLS 6806269 Lake Home
36589 County Highway 35
Dent MN 56528



website: www.AffinityRealEstate.com | email: info@affinityrealestate.com | office: 218-237-3333 | fax:218-237-3377



\$549,000
MLS 6806269 Lake Home
36589 County Highway 35
Dent MN 56528