



MLS 6806519 Land

**\$79,000**

5.02 Acres  
Raw Land

TBD County Rd.8  
Brainerd MN 56401

Status: Active

**Description:**

This 5.02-acre wooded property in Crow Wing County offers a private rural setting ideal for those seeking land for recreation, hunting, or building a country home. Located north of Pine Center, this property provides a quiet landscape surrounded by Minnesota's well-known outdoor amenities. The area is recognized for its diverse wildlife habitat, a mix of hardwoods, and access to many lakes, including the expansive Lake Mille Lacs just a short drive away. The property features a combination of level and gently rolling terrain with mature timber, offering potential build sites for a primary residence, seasonal cabin, or recreational retreat. A nice mix of woods provides natural cover and food sources for local wildlife. Deer, turkey, and small game are commonly found throughout the region, making this acreage a practical choice for hunting or observing nature. Outdoor enthusiasts will appreciate the proximity to several lakes known for fishing and boating opportunities. Lake Mille Lacs, one of Minnesota's premier fishing destinations, is located within a reasonable distance. Additional nearby lakes and public lands expand the options for recreation, from water sports to snowmobiling and hiking. This property offers multiple potential uses. It could serve as a homesite for year-round living, a weekend getaway, or a small hunting base. The wooded setting enhances privacy, and the manageable acreage size makes it easy to maintain. Whether you are interested in enjoying the outdoors, creating a custom build site, or holding land for future use, this property provides flexibility and value. An adjoining 5.0-acre parcel/ MLS 6806517 is also available for purchase, offering the opportunity to expand your ownership to over 10 acres. Combining the two parcels would provide additional space for building, recreation, or habitat management. Nearby towns include Pine Center, approximately 5 miles to the south, and Garrison, about 15 miles away on the western shore of Mille Lacs Lake. Brainerd, a regional hub with shopping, dining, and services, is roughly 25 miles southwest. The property's location allows easy access to amenities while preserving the quiet character of rural Crow Wing County. This 5.02-acre tract presents a straightforward opportunity to own land in a region known for outdoor recreation and natural beauty. With nearby utilities, lake access, and hunting potential, it's well-suited for those looking to invest in a manageable parcel of Minnesota land.

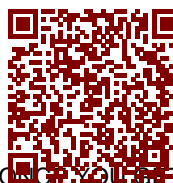
**Additional Details:**

Lot Acres	5.02
School District	181
Taxes	\$1
Taxes with Assessments	(unreported)
Tax Year	2025



Listed By:  
Whitetail Properties Real Estate

Affinity Real Estate Inc. participates in the Regional Multiple Listing Service of Minnesota, Inc Broker Reciprocity (sm) program, allowing us to display other broker's listings on our website. All properties are subject to prior sale, change or withdrawal.  
**Driving Directions**  
HWY 169 TO COUNTY ROAD 2 SE ALSO KNOWN AS 460TH ST  
ROAD 8 FOR 6.4 MILES TO PROPERTY ON RIGHT-HAND SIDE.



**Call Affinity Real Estate**

**218-237-3333**

**info@affinityrealestate.com**



NORTH ON COUNTY

**Affinity Real Estate - 600 Park Avenue South - Park Rapids MN 56470**



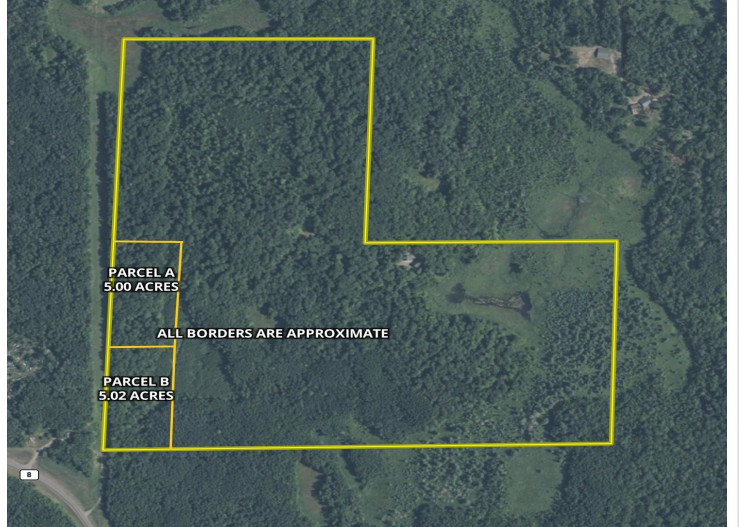


website: [www.AffinityRealEstate.com](http://www.AffinityRealEstate.com) | email: [info@affinityrealestate.com](mailto:info@affinityrealestate.com) | office: 218-237-3333 | fax: 218-237-3377



**\$79,000**  
MLS 6806519 Land  
TBD County Rd.8  
Brainerd MN 56401





website: [www.AffinityRealEstate.com](http://www.AffinityRealEstate.com) | email: [info@affinityrealestate.com](mailto:info@affinityrealestate.com) | office: 218-237-3333 | fax: 218-237-3377



**\$79,000**  
 MLS 6806519 Land  
 TBD County Rd.8  
 Brainerd MN 56401