



MLS 6806939 Land

\$185,000

21.1 Acres
Raw Land

TBD 26th Avenue
Backus MN 56474

Status: Active

Description:

Exceptional 21-acre parcel located on the north edge of Pine River, offering incredible potential for residential or commercial development. 425' of frontage on 26th Ave SW offers a quiet entrance for housing development or private homestead. This versatile property also features prime frontage on a busy corridor ideal for commercial visibility and traffic with the direct access via 474' of frontage on Hwy 371 for commercial or industrial ventures. Property boasts rolling high ground studded with mature Pines and open level field setting the stage for an excellent opportunity to be split along the wood line creating a 7 acre open-field Commercial envelope and 14 acre wooded Residential site maximizing your return! Current zoning allows residential new splits down to 1 acre minimum. Whether you're looking to develop, invest, or build, this property presents an outstanding opportunity in a growing area with strong future potential. Don't miss this chance to secure a premier tract in a highly desirable location!

Additional Details:

Lot Acres	21.1
Lot Dimensions	Irregular
School District	2174
Taxes	\$414
Taxes with Assessments	\$414
Tax Year	2025

Additional Features:

Driving Directions:

From Pine River Stoplights- North on Hwy 371 just outside of town to Right on 26th Ave SW to property on Left. Alternately there is access directly from Hwy 371 at Fire #2042.



Listed By:
Positive Realty

Affinity Real Estate Inc. participates in the Regional Multiple Listing Service of Minnesota, Inc Broker Reciprocity (sm) program, allowing us to display other broker's listings on our website. All properties are subject to prior sale, change or withdrawal.



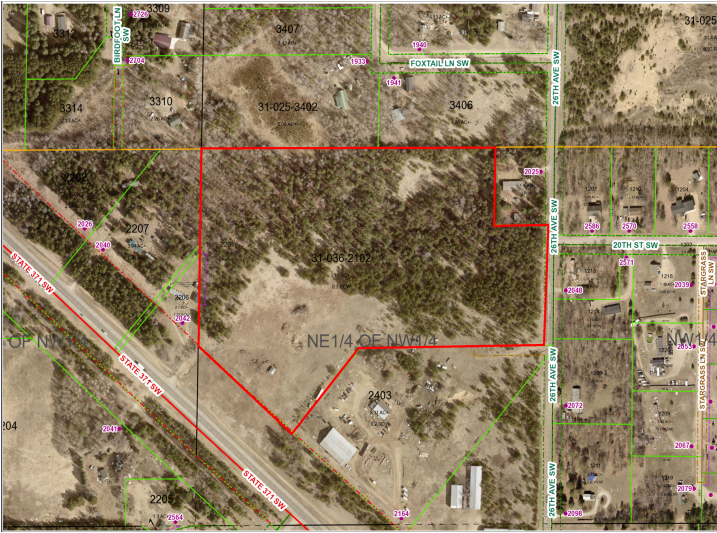
Call Affinity Real Estate

218-237-3333

info@affinityrealestate.com



Affinity Real Estate - 600 Park Avenue South - Park Rapids MN 56470



website: www.AffinityRealEstate.com | email: info@affinityrealestate.com | office: 218-237-3333 | fax:218-237-3377



\$185,000
MLS 6806939 Land
TBD 26th Avenue
Backus MN 56474



website: www.AffinityRealEstate.com | email: info@affinityrealestate.com | office: 218-237-3333 | fax:218-237-3377

Affinity
REAL ESTATE INC

\$185,000
MLS 6806939 Land
TBD 26th Avenue
Backus MN 56474



website: www.AffinityRealEstate.com | email: info@affinityrealestate.com | office: 218-237-3333 | fax:218-237-3377



\$185,000
MLS 6806939 Land
TBD 26th Avenue
Backus MN 56474