



MLS 6808000 Commercial

\$1,995

605 Laurel Street
Brainerd MN 56401

Status: Active

Description:

INTRO LEASE RATE OF \$1,995/MONTH!

Lease Space is 3,907 SF on the Upper Level of the Building. \$1995/Month Gross + Electric, Phone & Internet.

Discover a unique opportunity to lease space in an iconic piece of Brainerd's history. The Elks Building is a 1926 Italian design marvel featuring light grey brick, a granite base, and facade details trimmed in terra cotta. The distinctive Elks emblem graces the entrance, reminding visitors of its storied past. The lease space on offer is an upper-level location. It has a comprehensive setup with a reception area, two private offices, and a conference room. It's also equipped with a breakroom and two restrooms, with two spacious open work areas to cater to versatile business needs. Its prime stoplight intersection assures easy access and visibility along with high traffic counts, both vehicular and pedestrian. Position your business in a historic backdrop offering modern functionality and get the best of both worlds in Downtown Brainerd.

Additional Details:

Year Built	1926
Lot Acres	0.48
Lot Dimensions	150x140
School District	181
Taxes	(unreported)
Taxes with Assessments	(unreported)
Tax Year	2025

Additional Features:

Fuel: Natural Gas **Heat:** Forced Air

Driving Directions:

From Hwy 210 (Washington Street) / Hwy 371 (S 6th Street) intersection in Brainerd - South on S 6th Street 2 blocks - East on Laurel Street - Door to space is located just west of Cat Tales



Listed By:
Close-Converse Commercial Prop

Affinity Real Estate Inc. participates in the Regional Multiple Listing Service of Minnesota, Inc Broker Reciprocity (sm) program, allowing us to display other broker's listings on our website. All properties are subject to prior sale, change or withdrawal.



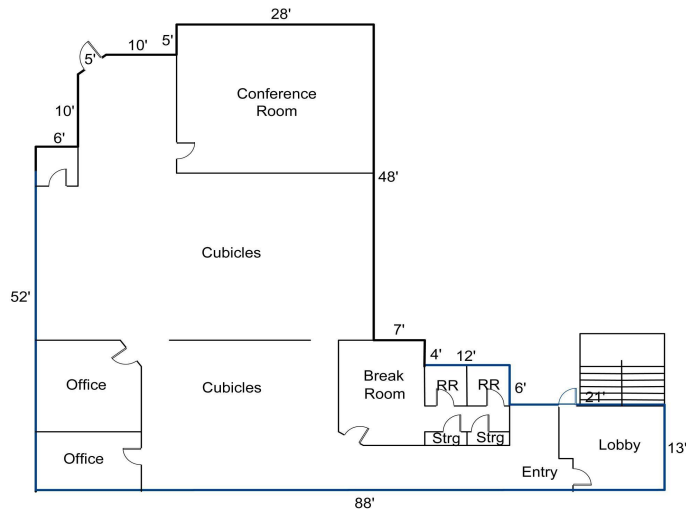
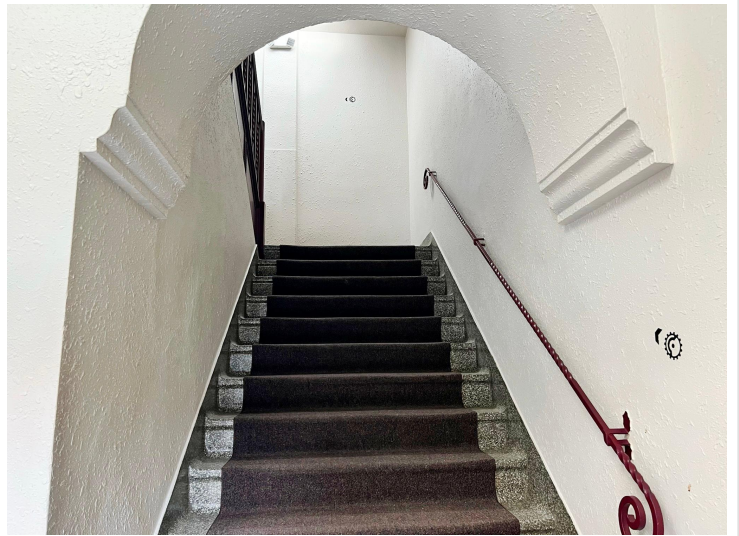
Call Affinity Real Estate

218-237-3333

info@affinityrealestate.com



Affinity Real Estate - 600 Park Avenue South - Park Rapids MN 56470



website: www.AffinityRealEstate.com | email: info@affinityrealestate.com | office: 218-237-3333 | fax: 218-237-3377



\$1,995
 MLS 6808000 Commercial
 605 Laurel Street
 Brainerd MN 56401



website: www.AffinityRealEstate.com | email: info@affinityrealestate.com | office: 218-237-3333 | fax:218-237-3377



\$1,995
MLS 6808000 Commercial
605 Laurel Street
Brainerd MN 56401



website: www.AffinityRealEstate.com | email: info@affinityrealestate.com | office: 218-237-3333 | fax:218-237-3377



\$1,995
MLS 6808000 Commercial
605 Laurel Street
Brainerd MN 56401