



MLS 6808624 Residential

\$1,175,000

4,393 sq ft
8 bedrooms
7 baths

3600 Royal Lytham Court
Brainerd MN 56401

Status: Active

Description:

Live on the Lehman at Craguns Resort! This recently finished home is fully furnished at the Craguns Development and you can make this your full-time residence or enter it into the Craguns Rental Program. If you've thought about doing a vacation rental, we just made it an easy decision for you with our \$72,000 rental guarantee! This home has been carefully designed so the main level includes very open spaces, and tons of windows offering scenic views. The main level also includes the primary suite, 2nd bedroom, 3/4 bathroom and laundry. The upper level includes 3 additional bedrooms and 3 more bathrooms. The lower level includes 2 more bedrooms, 2 more bathrooms and a large recreation room. Enjoy spending time on the patio and around the firepit or the front porch. This is your chance to own a home and be part of the Craguns Resort!

Additional Details:

Year Built	2023
Lot Acres	0.86
Lot Dimensions	getting
Garage Stalls	2
School District	181
Taxes	\$1,546
Taxes with Assessments	\$1,546
Tax Year	2024

Additional Features:

Basement: Egress Window(s), Finished, Concrete **Fuel:** Natural Gas **Garage:** 2 **Heat:** Forced Air **Sewer:** Septic System Compliant - Yes
Water: Well **Air Conditioning:** Central Air

Driving Directions:

From Hwy 71 and Cty Rd 77 (south end) go west on 77, right onto Tom Lehman Dr, left onto Royal Lytham Ct to home.



Listed By:
First Impressions Home Group

Affinity Real Estate Inc. participates in the Regional Multiple Listing Service of Minnesota, Inc Broker Reciprocity (sm) program, allowing us to display other broker's listings on our website. All properties are subject to prior sale, change or withdrawal.



Call Affinity Real Estate

218-237-3333

info@affinityrealestate.com



Affinity Real Estate - 600 Park Avenue South - Park Rapids MN 56470



website: www.AffinityRealEstate.com | email: info@affinityrealestate.com | office: 218-237-3333 | fax: 218-237-3377

Affinity
REAL ESTATE INC

\$1,175,000
MLS 6808624 Residential
3600 Royal Lytham Court
Brainerd MN 56401



website: www.AffinityRealEstate.com | email: info@affinityrealestate.com | office: 218-237-3333 | fax: 218-237-3377



\$1,175,000
 MLS 6808624 Residential
 3600 Royal Lytham Court
 Brainerd MN 56401

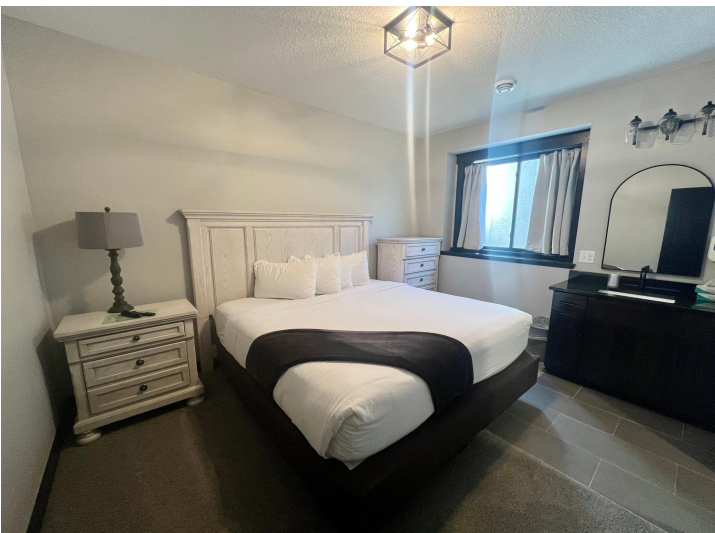


website: www.AffinityRealEstate.com | email: info@affinityrealestate.com | office: 218-237-3333 | fax: 218-237-3377

Affinity
REAL ESTATE INC

\$1,175,000

MLS 6808624 Residential
3600 Royal Lytham Court
Brainerd MN 56401



website: www.AffinityRealEstate.com | email: info@affinityrealestate.com | office: 218-237-3333 | fax: 218-237-3377



\$1,175,000
MLS 6808624 Residential
3600 Royal Lytham Court
Brainerd MN 56401



website: www.AffinityRealEstate.com | email: info@affinityrealestate.com | office: 218-237-3333 | fax: 218-237-3377

Affinity
REAL ESTATE INC

\$1,175,000
MLS 6808624 Residential
3600 Royal Lytham Court
Brainerd MN 56401



website: www.AffinityRealEstate.com | email: info@affinityrealestate.com | office: 218-237-3333 | fax: 218-237-3377

Affinity
REAL ESTATE INC

\$1,175,000
MLS 6808624 Residential
3600 Royal Lytham Court
Brainerd MN 56401