



MLS 6808930 Residential

\$119,000

748 sq ft
2 bedrooms
1 baths

170 Main Street
Laporte MN 56461

Status: Active

Description:

Welcome to this inviting 2-bedroom, 1-bath home offering comfort, convenience, and character. Step inside to find a practical main-level layout featuring the kitchen, living room, bathroom, and laundry area — all designed for easy living. The unfinished basement provides ample storage space, while both bedrooms are tucked upstairs for added privacy. Enjoy the charm of the stone exterior paired with fresh new siding on the gable ends and a brand-new roof on both the home and garage (2025). The detached 14x22 one-stall garage offers great space for parking or hobbies. With city water and sewer already connected, this property is ready for you to move in and make it your own. Located in Laporte, you'll appreciate the small-town feel while still being close to nearby lakes and outdoor recreation.

Additional Details:

Year Built	1928
Lot Acres	0.16
Lot Dimensions	50x140
Garage Stalls	1
School District	306
Taxes	\$605
Taxes with Assessments	\$826
Tax Year	2025

Additional Features:

Fuel: Propane **Heat:** Forced Air

Driving Directions:

In Laporte head SE on 1st Ave NW/5th Ave toward 2nd St/Main St W. Turn left onto 2nd St/Main St W and continue straight onto 2nd St/Main St E to property on left.



Listed By:
Realty ONE Group Choice

Affinity Real Estate Inc. participates in the Regional Multiple Listing Service of Minnesota, Inc Broker Reciprocity (sm) program, allowing us to display other broker's listings on our website. All properties are subject to prior sale, change or withdrawal.



Call Affinity Real Estate

218-237-3333

info@affinityrealestate.com



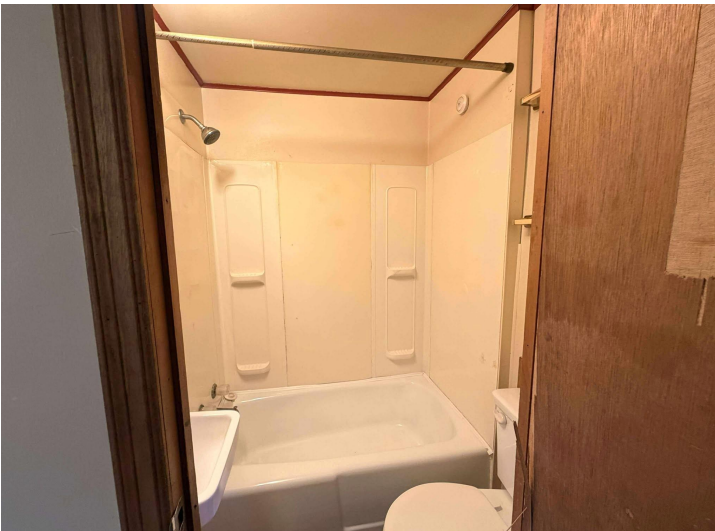
Affinity Real Estate - 600 Park Avenue South - Park Rapids MN 56470



website: www.AffinityRealEstate.com | email: info@affinityrealestate.com | office: 218-237-3333 | fax: 218-237-3377

Affinity
REAL ESTATE INC

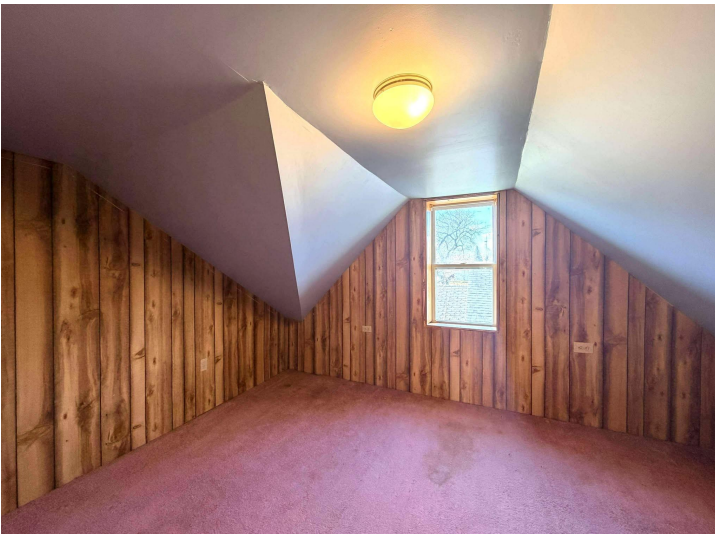
\$119,000
MLS 6808930 Residential
170 Main Street
Laporte MN 56461



website: www.AffinityRealEstate.com | email: info@affinityrealestate.com | office: 218-237-3333 | fax: 218-237-3377



\$119,000
MLS 6808930 Residential
170 Main Street
Laporte MN 56461



website: www.AffinityRealEstate.com | email: info@affinityrealestate.com | office: 218-237-3333 | fax: 218-237-3377



\$119,000
MLS 6808930 Residential
170 Main Street
Laporte MN 56461